

## Extensive congenital asymptomatic renal arteriovenous malformation

Simona Sica,<sup>1,2</sup> Francesca De Nigris,<sup>1,2</sup> Fabrizio Minelli,<sup>1,2</sup> Alessandro Cina,<sup>1,3</sup> Giovanni Tinelli,<sup>1,2</sup> Yamume Tshomba<sup>1,2</sup>

<sup>1</sup>Università Cattolica del Sacro Cuore, Rome; <sup>2</sup>Unit of Vascular Surgery, and <sup>3</sup>Unit of Radiology, Fondazione Policlinico Universitario A. Gemelli IRCCS, Rome, Italy

### Abstract

Renal Arteriovenous Malformations (AVMs) are abnormal communications between the intrarenal arterial and venous systems. These lesions may present with a wide range of signs and symptoms, including hypertension and hematuria. We report a case of a 71-year-old woman with incidental diagnosis of asymptomatic right renal AVM.

### Case Report

Congenital Arteriovenous Malformations (AVMs) are abnormal communications between arteries and veins with a vascular nidus that bypass the capillary bed.<sup>1</sup> Congenital renal AVMs are rare, with a reported incidence of 0.04%.<sup>2</sup> However, the true

prevalence may be higher because many renal Atrioventricular (AV) shunts remain clinically asymptomatic. Symptoms include massive hematuria, retroperitoneal hemorrhage, flank pain, hypertension, and high-output heart failure.<sup>3</sup> We report a case of a 71-year-old woman with an incidental diagnosis of asymptomatic right renal AVM. The patient's consent for publication was obtained. The patient had no hematuria, no hypertension, and renal function was normal, with a serum creatinine of 0.75 mg/dL and a glomerular filtration rate of 81 mL/min/1.73m<sup>2</sup>. Medical history included dyslipidemia and arthrosis. The patient did not report any history of renal trauma or recent medical intervention in which percutaneous instrumentation was used.

A Computed Tomography (CT) angiography showed a large AVM in the right kidney (Figure 1, Appendix I). Multiple tortuous and coiled feeding arteries directly shunting into a single venous sac were observed (Figure 2).

In consideration of the absence of symptoms and the age of the patient, no treatment was performed. Imaging follow-up with Color Doppler ultrasonography was performed at three and six months from the diagnosis, and yearly thereafter. A strict clinical follow-up and monitoring of renal function was performed.

Indications for treating an AVM are the progressive increase in the size, recurrent or persistent hematuria, and hemodynamic effects associated with the abnormality, especially hypertension, and high-output cardiac failure.<sup>3</sup> Surgical procedures, including nephrectomy and ligation of the feeding artery and endovascular embolization have been described.<sup>4</sup> However, in the case of asymptomatic incidentally diagnosed renal AVM, conservative treatment should be considered.

Correspondence: Simona Sica, Università Cattolica del Sacro Cuore, largo Agostino Gemelli, 8 - 00168 Roma, Italy.  
Tel. +39 345 83 18878. E-mail: simonasica1@gmail.com

Key words: renal arteriovenous malformation, AVM, personalized medicine.

Contributions: all the authors made a substantive intellectual contribution. All the authors have read and approved the final version of the manuscript and agreed to be accountable for all aspects of the work.

Conflict of interest: the authors declare no potential conflict of interest.

Funding: none.

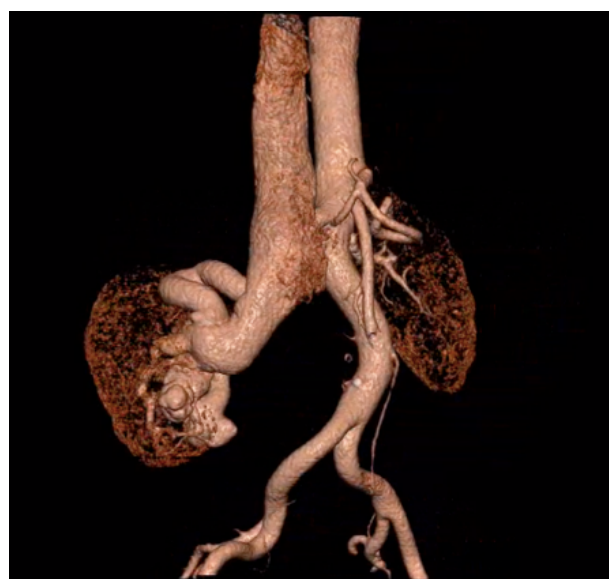
Availability of data and materials: all data generated or analyzed during this study are included in this published article.

Received: 30 August 2023.  
Accepted: 2 September 2023.  
Early view: 4 September 2023.

©Copyright: the Author(s), 2023  
Licensee PAGEPress, Italy  
Veins and Lymphatics 2023; 12:11695  
doi:10.4081/vl.2023.11695

This work is licensed under a Creative Commons Attribution-NonCommercial 4.0 International License (CC BY-NC 4.0).

Publisher's note: all claims expressed in this article are solely those of the authors and do not necessarily represent those of their affiliated organizations, or those of the publisher, the editors and the reviewers. Any product that may be evaluated in this article or claim that may be made by its manufacturer is not guaranteed or endorsed by the publisher.



**Figure 1.** 3D Volume-rendering of the Computed Tomography (CT) angiography showing the right renal arteriovenous malformations.



**Figure 2.** Maximum intensity projection, in axial **A)** and coronal **B)** plane of CT renal angiography in arterial phase demonstrating aneurysmal dilatation of segmental branch of main renal artery with early opacification of renal vein.

## References

1. Cura M, Elmerhi F, Suri R, et al. Vascular malformations and arteriovenous fistulas of the kidney. *Acta Radiologica* 2010;51:144-9.
2. Cho KJ, Stanley JC. Non-neoplastic congenital and acquired renal arteriovenous malformations and fistulas. *Radiology* 1978;129:333-43.
3. Carrafiello G, Laganà D, Peroni G, et al. Gross hematuria caused by a congenital intrarenal arteriovenous malformation: a case report. *Journal of medical Case Reports* 2011;5:510.
4. Maruno M, Kiyosue H, Tanoue S, et al. Renal Arteriovenous Shunts: Clinical Features, Imaging Appearance, and Transcatheter Embolization Based on Angioarchitecture. *Radiographics* 2016;36:580-95.

Non-commercial use only