

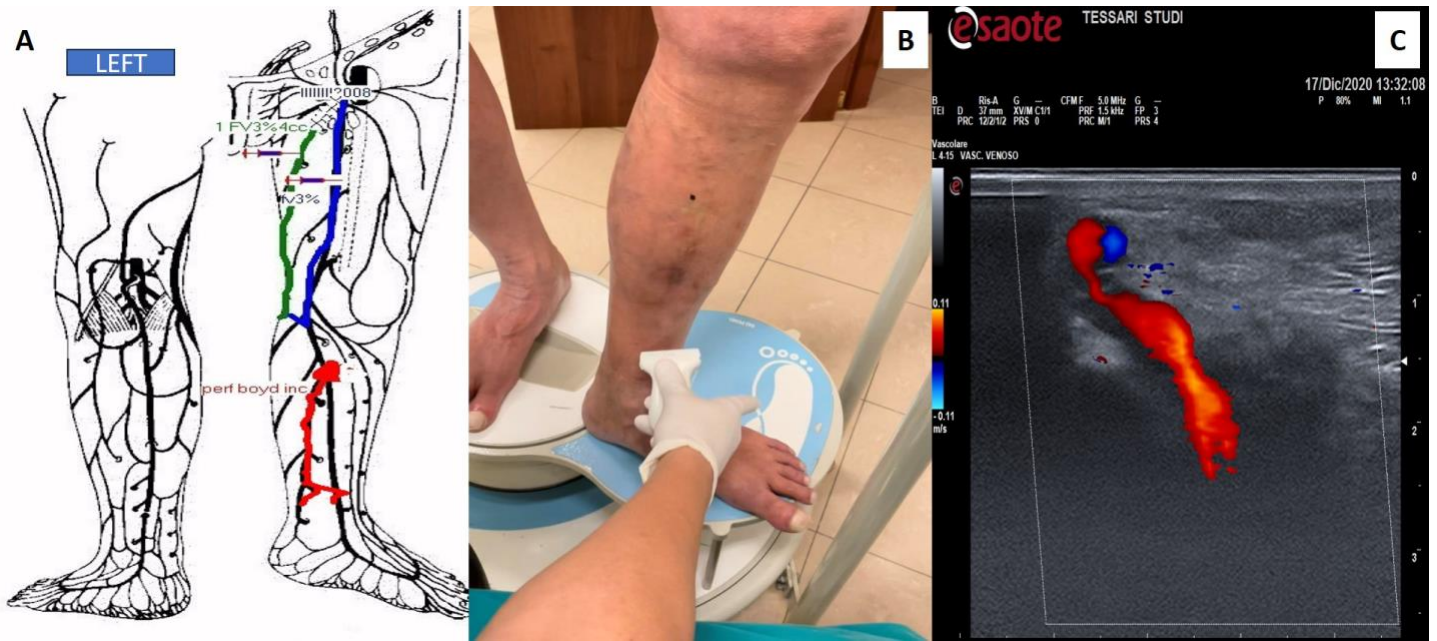
Supplementary Figure 1. Foam-Glue Syringe.



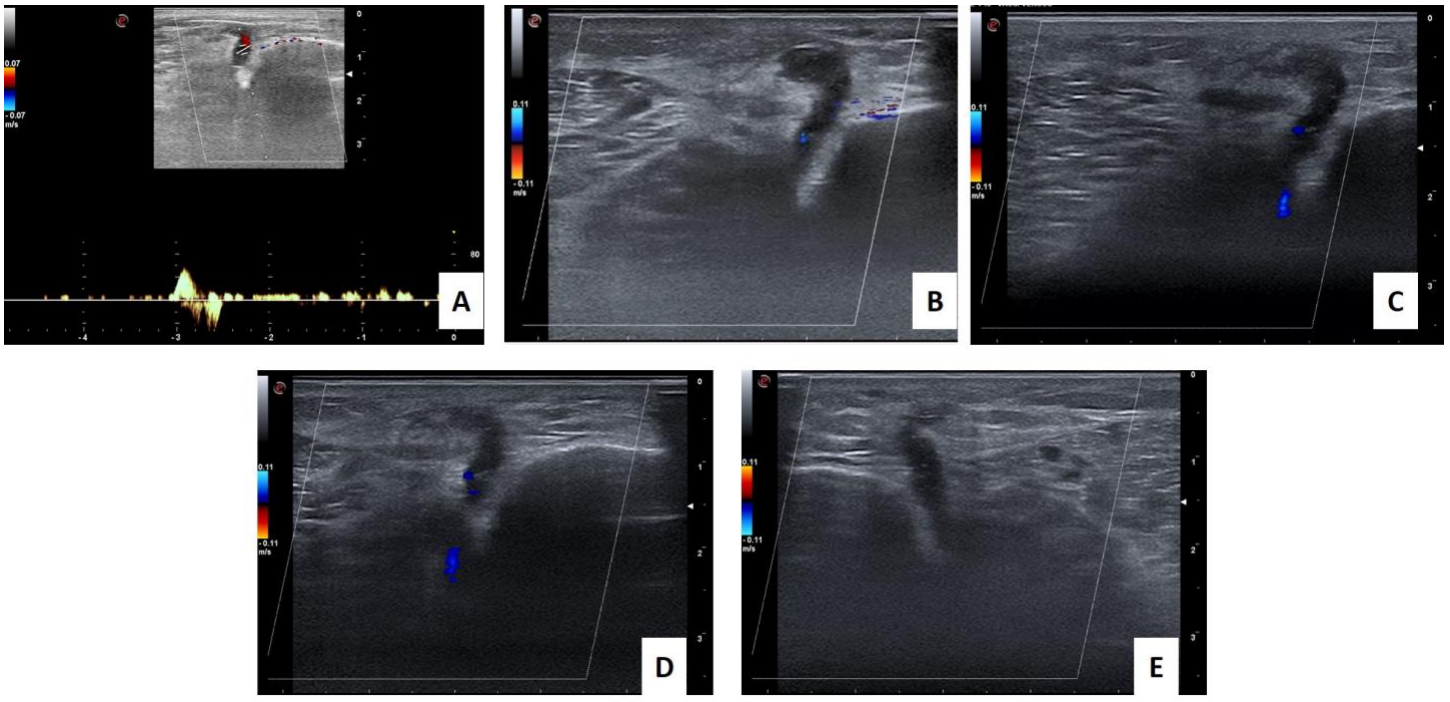
Supplementary Figure 2. Foam glue syringe system ready for treatment



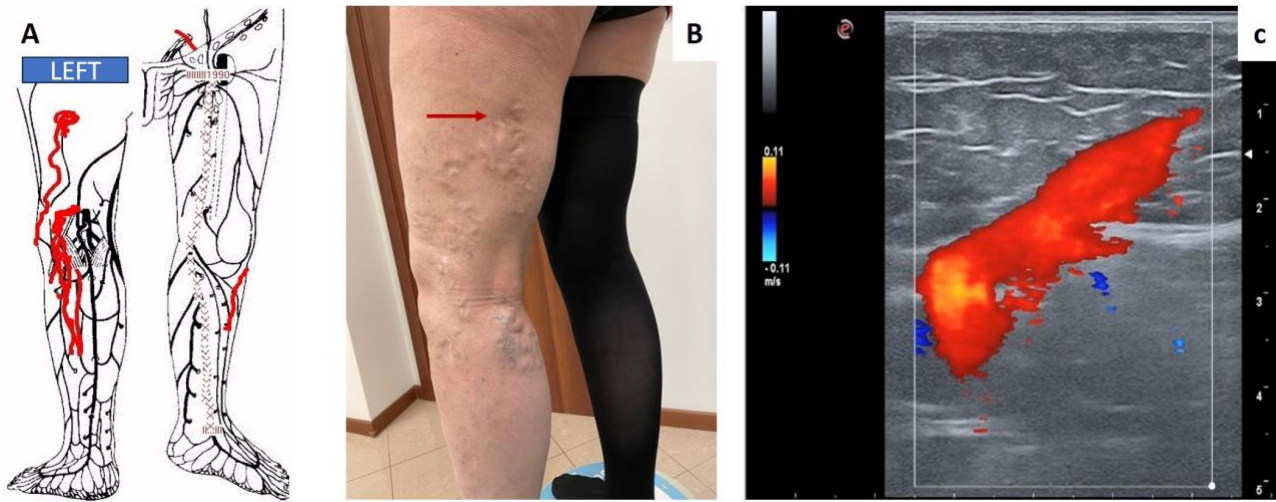
Supplementary Figure 3. Foam glue syringe system echo-guide injection.



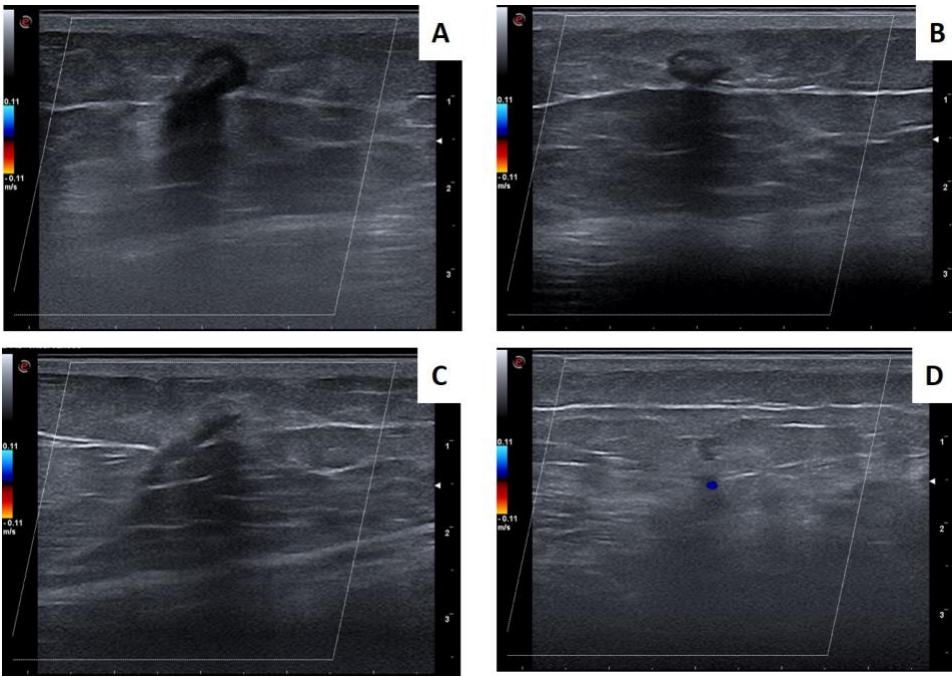
Supplementary Figure 4. A) haemodynamic cartography by Echo Color Doppler (ECD). In red, the incontinent perforant vein. B) leg area to be treated. C) reflux of Boyd's perforant vein to the ECD investigation.



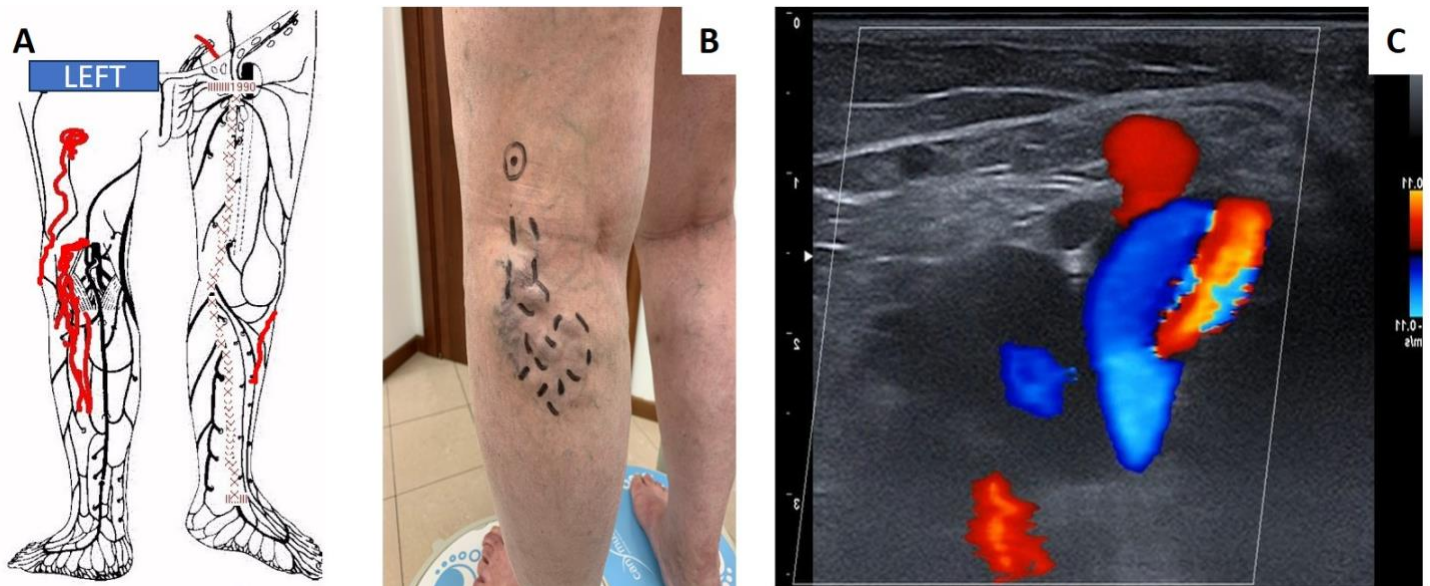
Supplementary Figure 5. Follow up case 1. **A)** no reflux by Echo Color Doppler (ECD) in Boyd's perforant at 1 month. **B)** at 3 months no reflux. **C)** check at 6 months, no reflux. **D)** check at 12 months, no reflux. **E)** after 30 months, no reflux in Boyd's perforant.



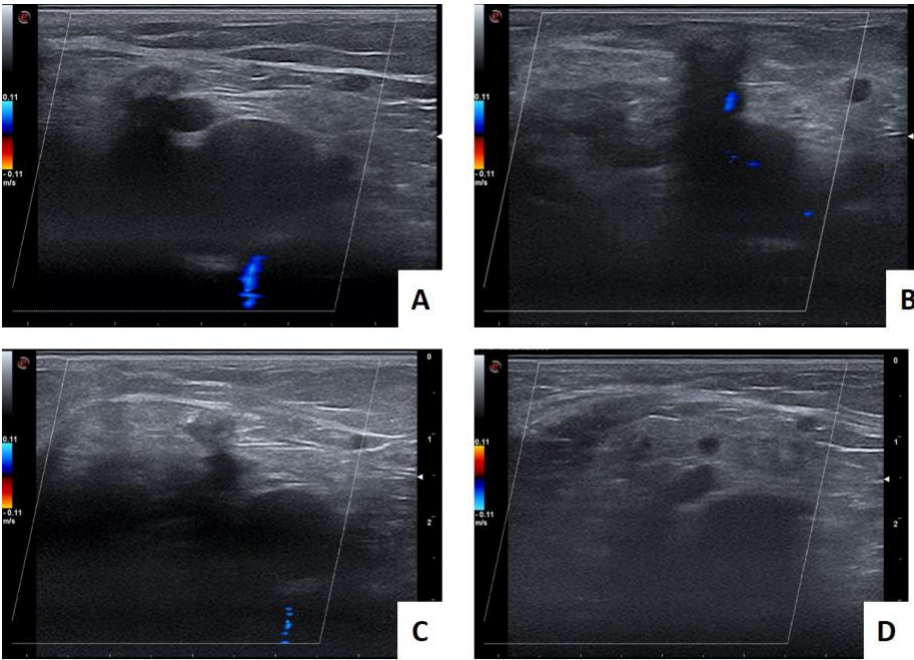
Supplementary Figure 6. A) haemodynamic cartography by Echo Color Doppler (ECD). In red, the incompetent perforant vein. B) leg area to be treated. C) reflux of perforant vein to the ECD investigation.



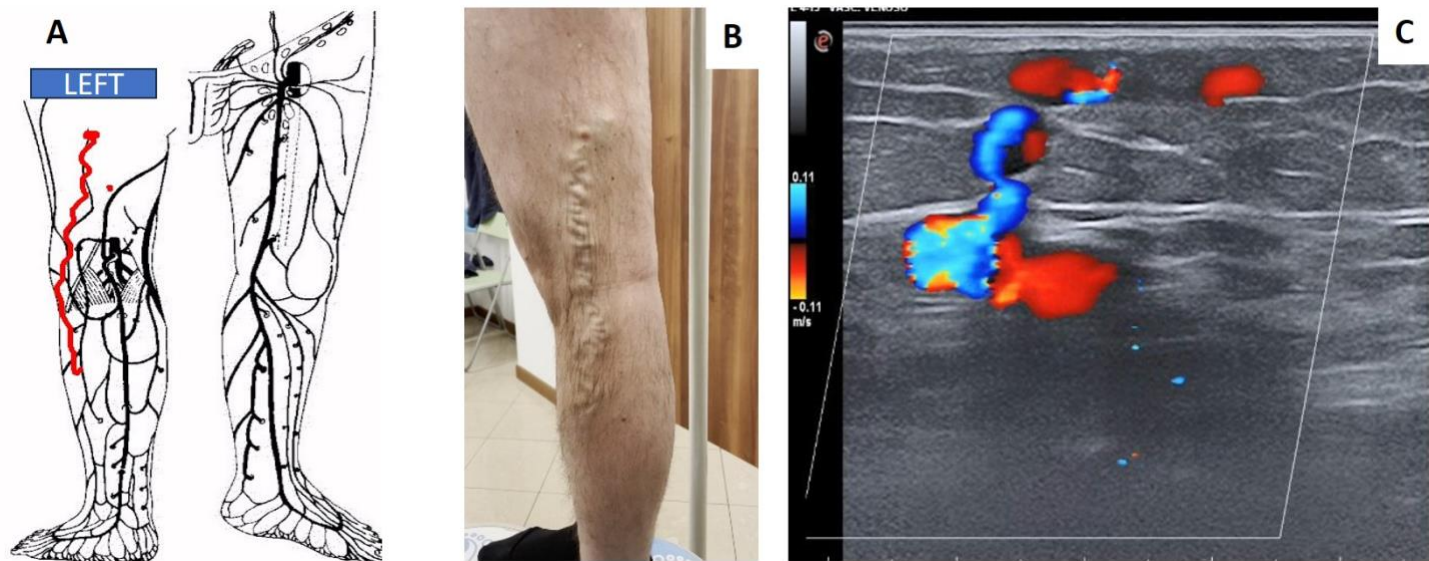
Supplementary Figure 7. Follow up case 2. **A)** no reflux by ECD in gluteal perforant at 1 month. **B)** check at 6 months, no reflux. **C)** check at 12 months, no reflux. **D)** After 30 months, no reflux in gluteal perforant.



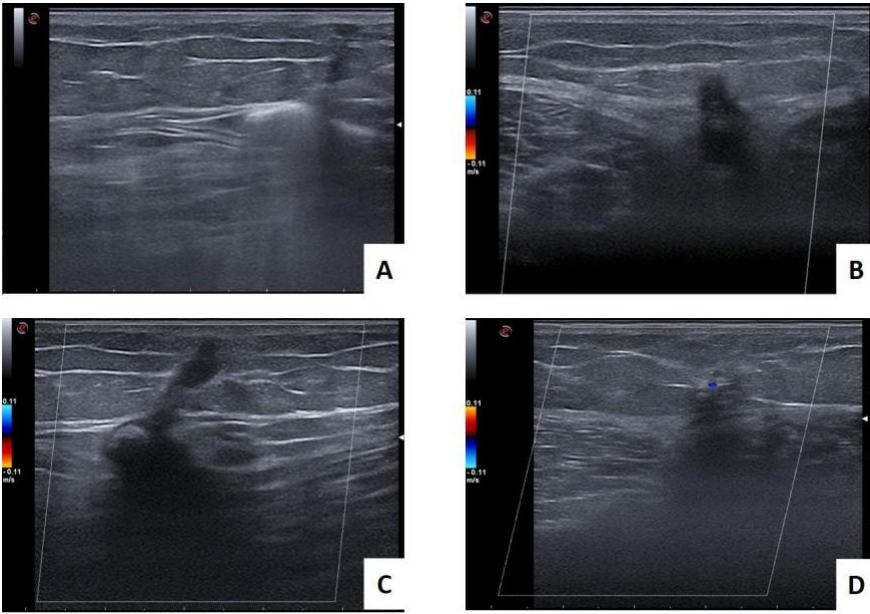
Supplementary Figure 8. A) haemodynamic cartography by Echo Color Doppler (ECD). In red, the incompetent perforant vein. B) leg area to be treated. C) reflux of perforant vein to the ECD investigation.



Supplementary Figure 9. Follow up case 3. **A)** no reflux by ECD in gluteal perforant at 1 month. **B)** check at 6 months, no reflux. **C)** check at 12 months, no reflux. **D)** after 24 months, no reflux in Thiery's perforant.



Supplementary Figure 10. A) haemodynamic cartography by Ecocolor Doppler (ECD). In red, the incompetent perforant vein. B) leg area to be treated. C) reflux of perforant vein to the ECD investigation.



Supplementary Figure 11. Follow up case 4. **A)** foam-glue coaxial injection site. Note the hyperechogenicity on B-mode analysis. **B)** check at 6 months, no reflux. **C)** check at 12 months, no reflux. **D)** after 24 months, no reflux in atypical postero-lateral perforant vein.