

Figure 43. *Parakiefferiella* sp. 3, larva (A-F). A) Anterior portion of larva, head and anterior parapod. B) Antenna. C) Premandible. D) Mandible. E) Mentum. F) Posterior portion of larva.

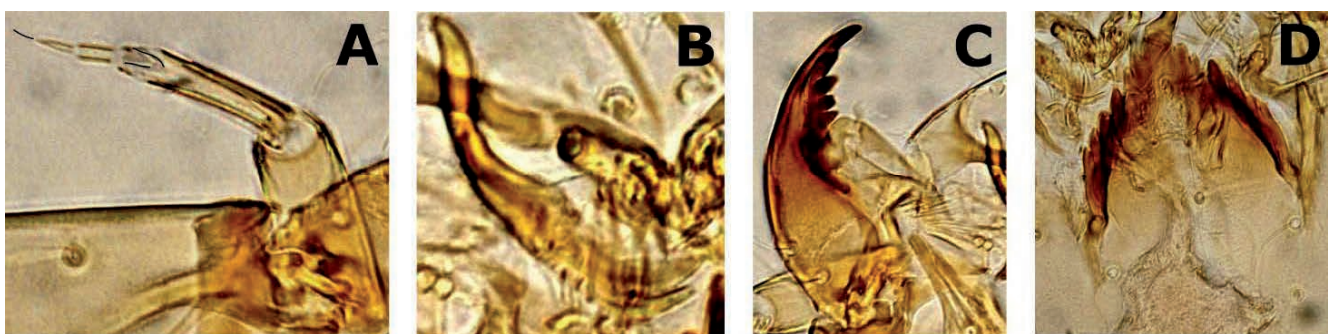


Figure 44. *Parakiefferiella* sp. 4, larva (A-D). A) Antenna. B) Premandible. C) Mandible. D) Mentum.

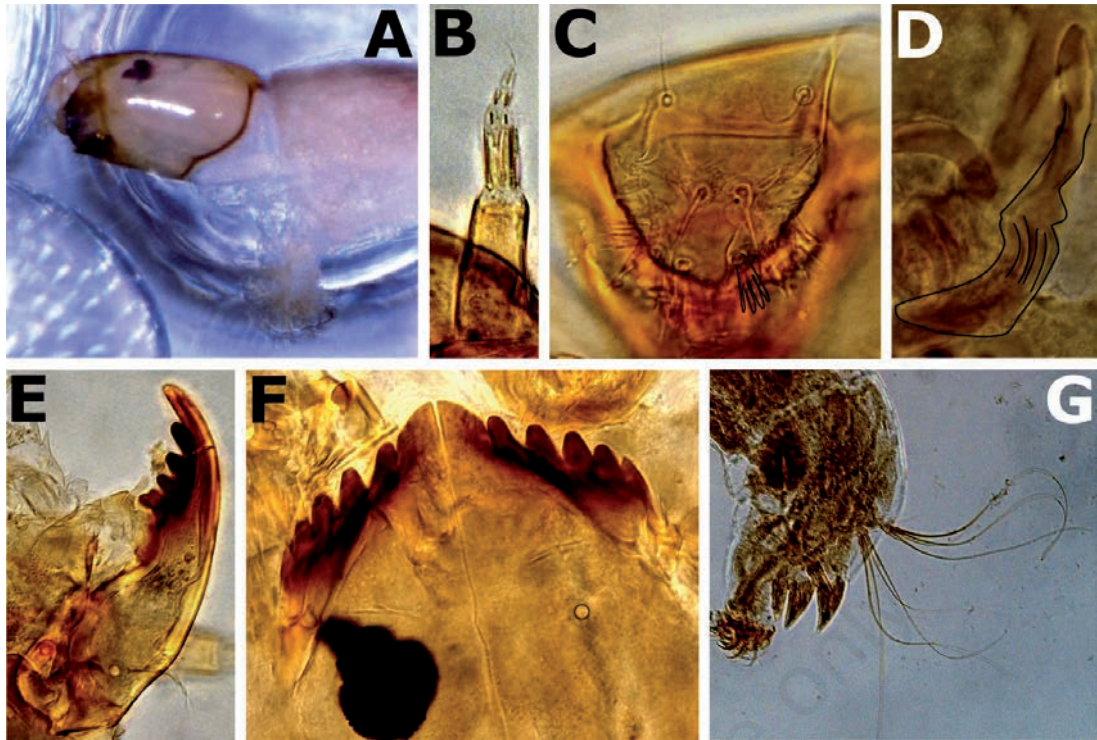


Figure 45. *Parakiefferiella* cf. *gracillima* (Kieffer, 1922), larva (A-G). A) Anterior portion of larva, head and anterior parapod. B) Antenna. C) Labrum. D) Premandible. E) Mandible. F) Mentum. G) Posterior portion of larva.

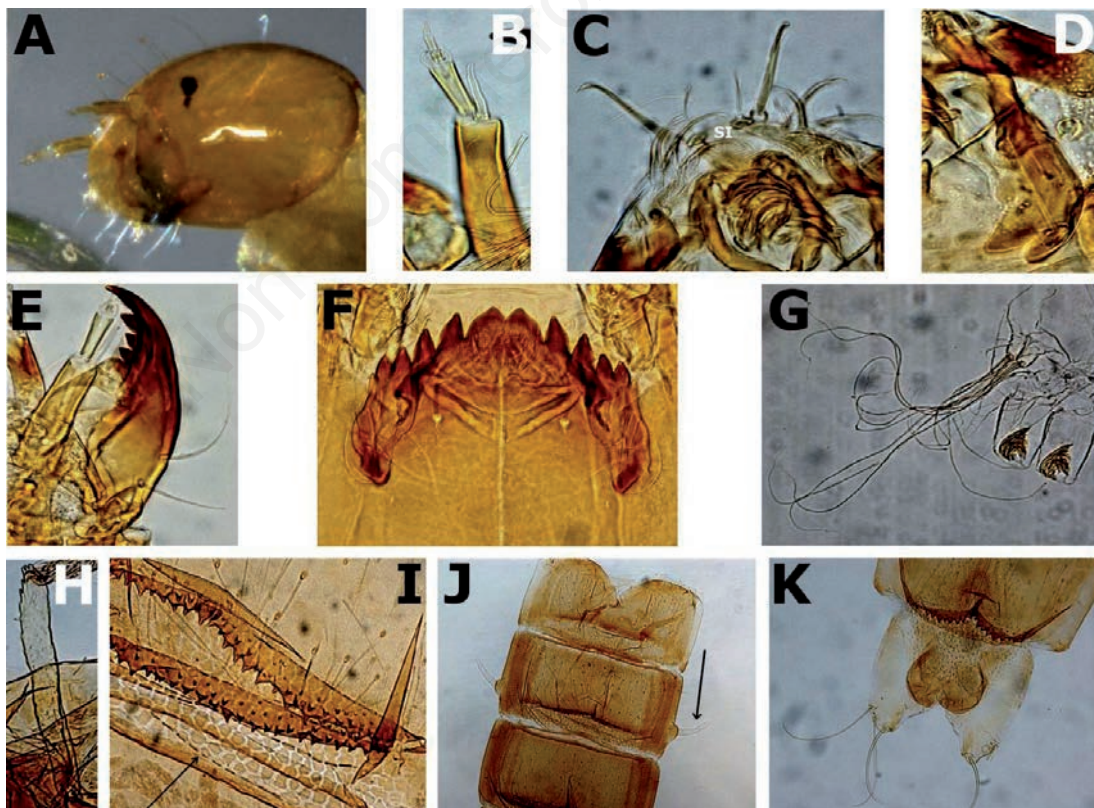


Figure 46. *Parametriocnemus lundbecki* (Johannsen, 1905), larva (A-G), pupa (H-K). A) Head lateral view. B) Antenna. C) Labrum. D) Premandible. E) Mandible. F) Mentum. G) Posterior portion of larva. H) Thoracic horn. I) Polygons of tergites and sternites. J) Segments I-III, arrows indicate the pedes spuri. K) Anterior of segment VIII, anal lobes and genital sacs.

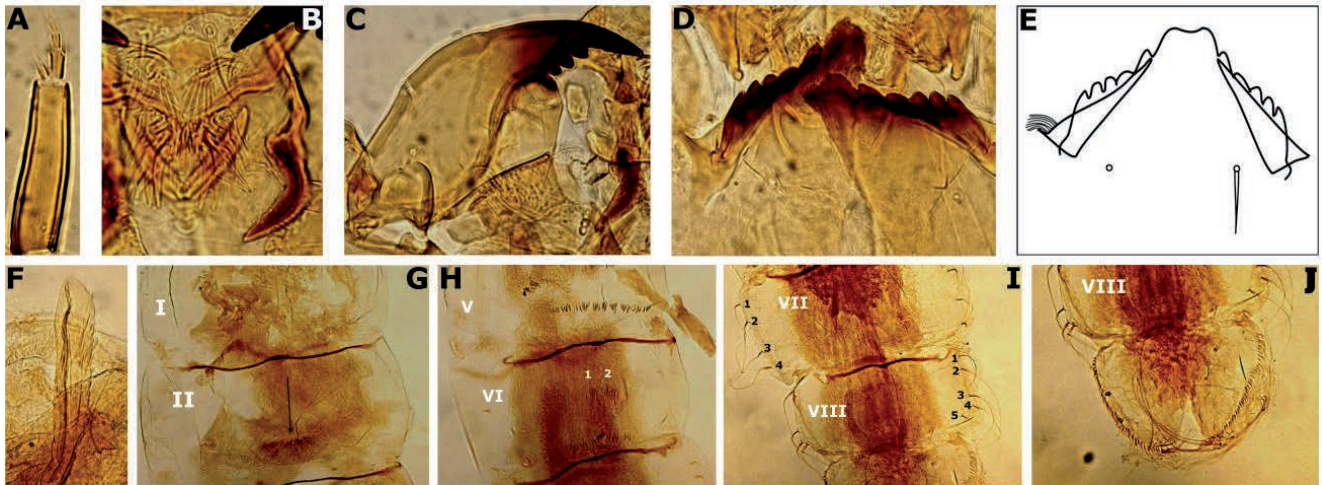


Figure 47. *Psectrocladius (Psectrocladius) limbatellus* (Holmgren, 1869), larva (A-E), pupa (F-J). A) Antenna. B) Labrum. C) Mandible. D) Mentum. E) Reconstructed mentum. F) Thoracic horn. G) Tergites I-II, arrow indicates the protuberance spines. H) Tergites V-VI, double patch of median spines. I) Tergites VII-VIII, LS setae. J) Anal lobes and genital sacs.

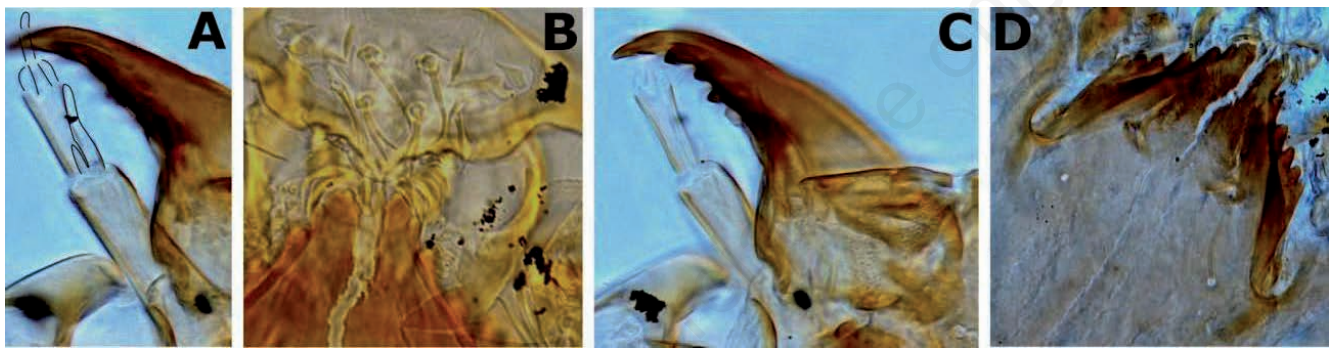


Figure 48. *Rheocricotopus (Psilocricotopus) chalybeatus* group, larva (A-D). A) Antennae. B) Labrum. C) Mandible. D) Mentum.

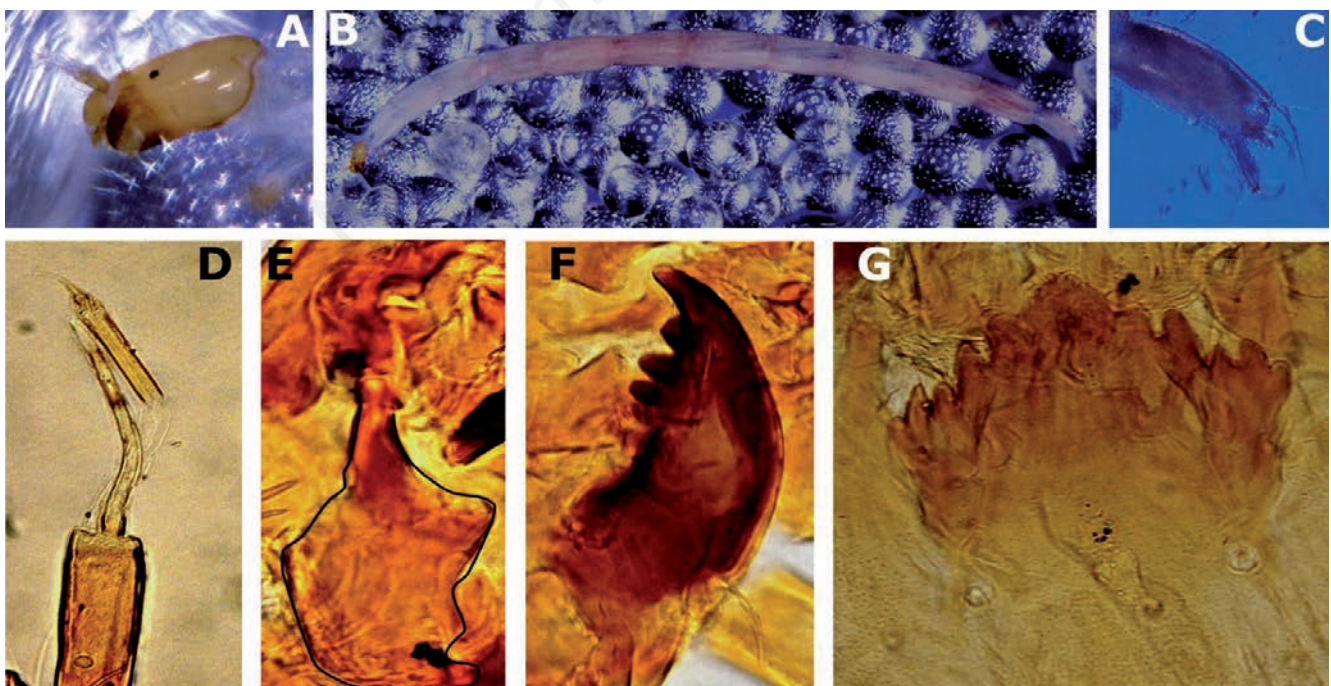


Figure 49. *Stictocladus* sp. G Sæther *et* Cranston, 2012, larva (A-G). A) Anterior portion of larva, head and anterior parapod. B) Larva lateral view. C) Posterior parapod. D) Antenna. E) Premandible. F) Mandible. G) Mentum.

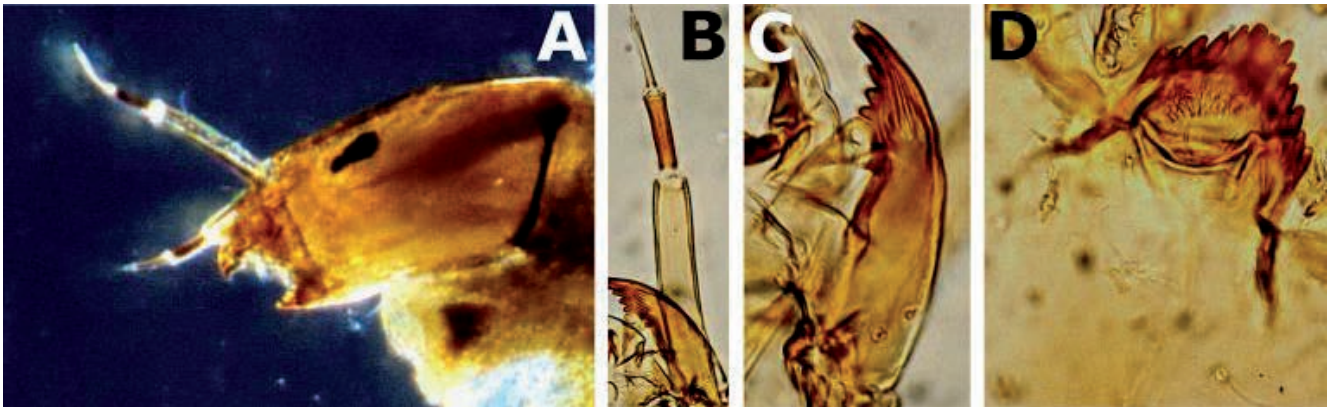


Figure 50. *Thienemanniella xena* (Roback, 1957), larva (A-D). A) Anterior portion of larva, head and anterior parapod. B) Antenna. C) Mandible. D) Mentum.

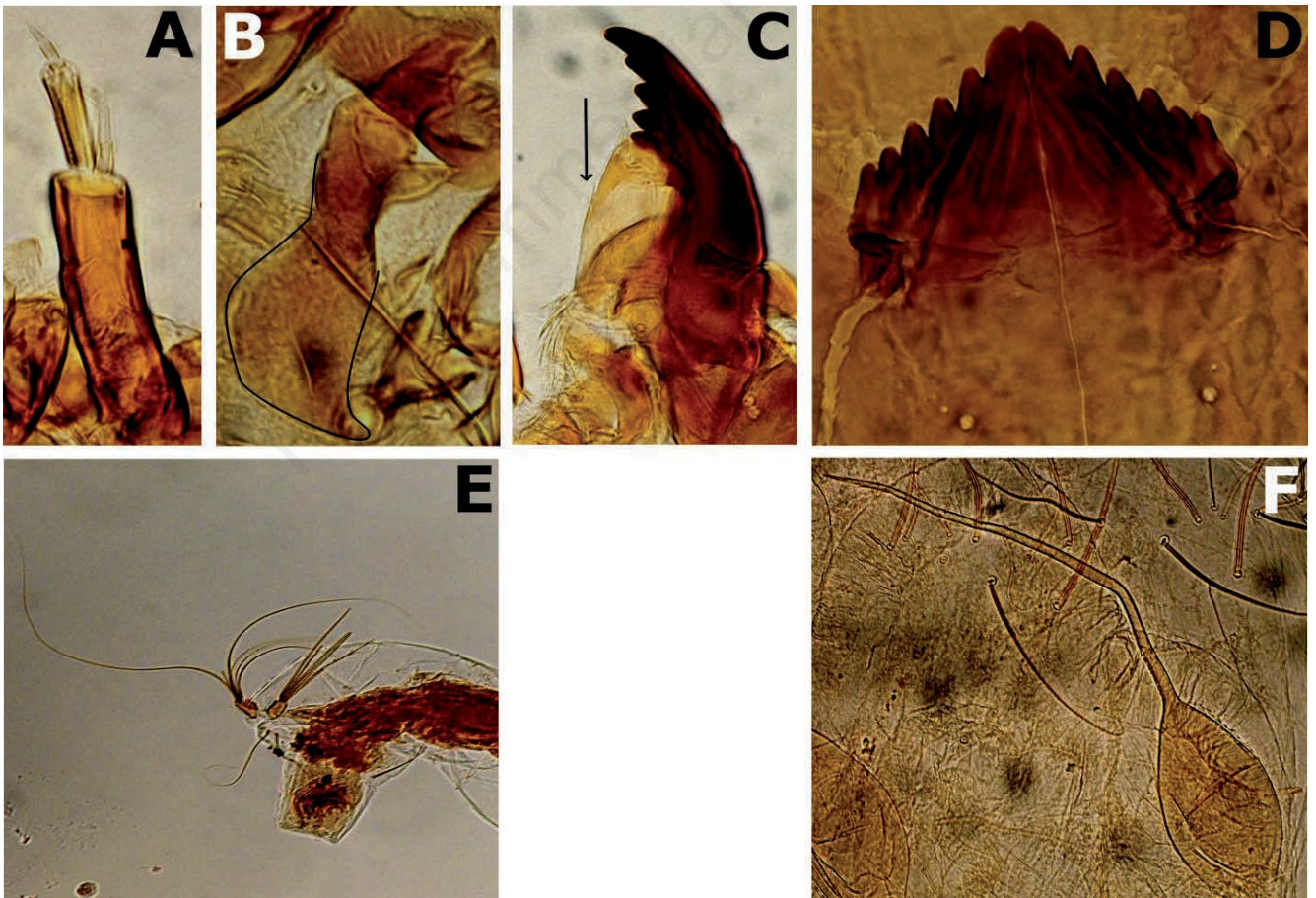


Figure 51. *Tvetenia paucunca* (Sæther, 1969), larva (A-E), pupa (F). A) Antenna. B) Premandible. C) Mandible, arrow indicates the inner spines. D) Mentum. E) Posterior portion. F) Thoracic horn.

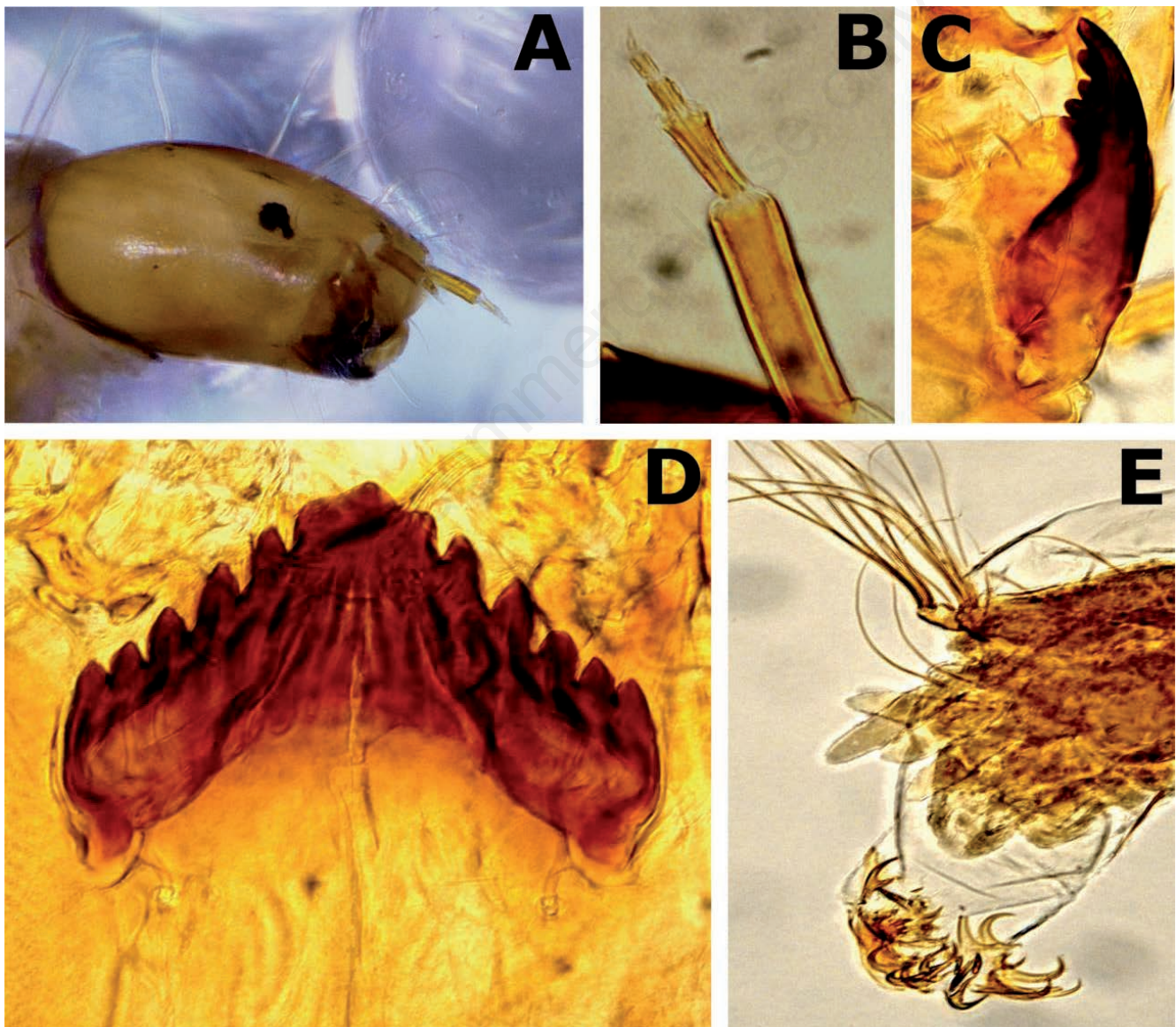


Figure 52. *Tvetenia tshernovskii* (Pankratova, 1968), larva (A-E). A) Head lateral view. B) Antenna. C) Mandible. D) Mentum. E) Posterior portion of larva.

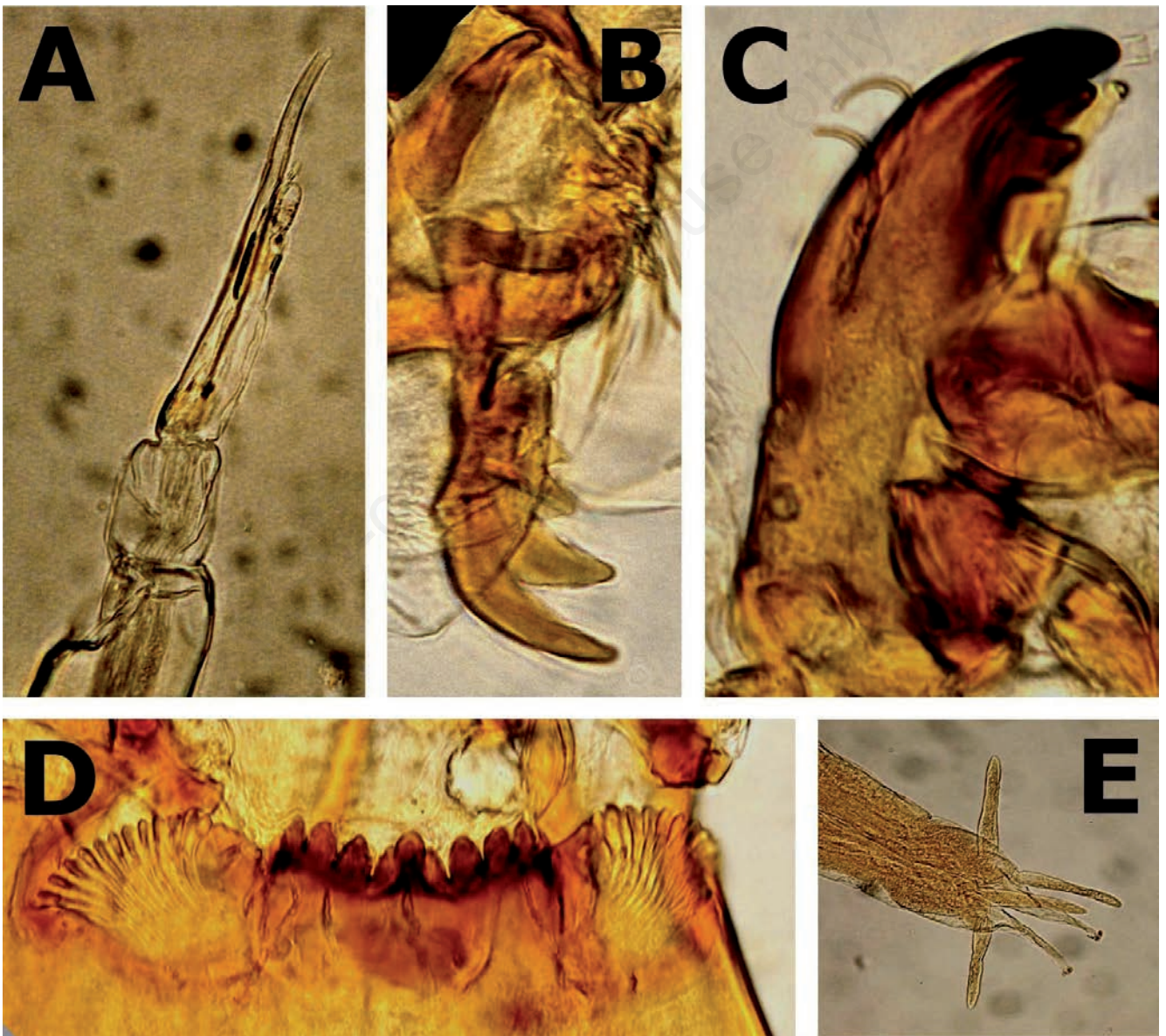


Figure 53. *Beckidia tethys* (Townes, 1945), larva (A-E). A) Antenna. B) Premandible. C) Mandible. D) Mentum. E) Posterior portion of larva.

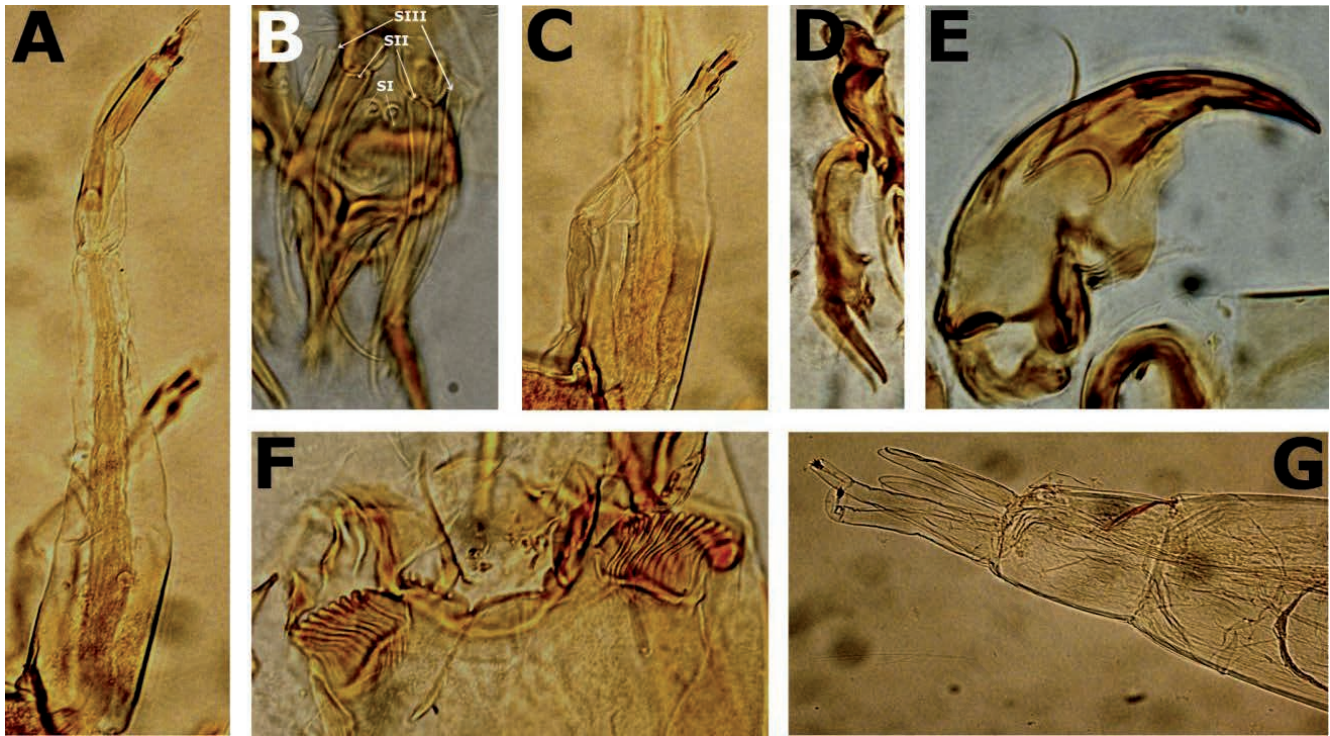


Figure 54. *Chernovskiiia orbicus* (Townes, 1945), larva (A-G). A) Antenna. B) Labrum. C) Maxillary palp. D) Premandible. E) Mandible. F) Mentum. G) Posterior portion of larva.

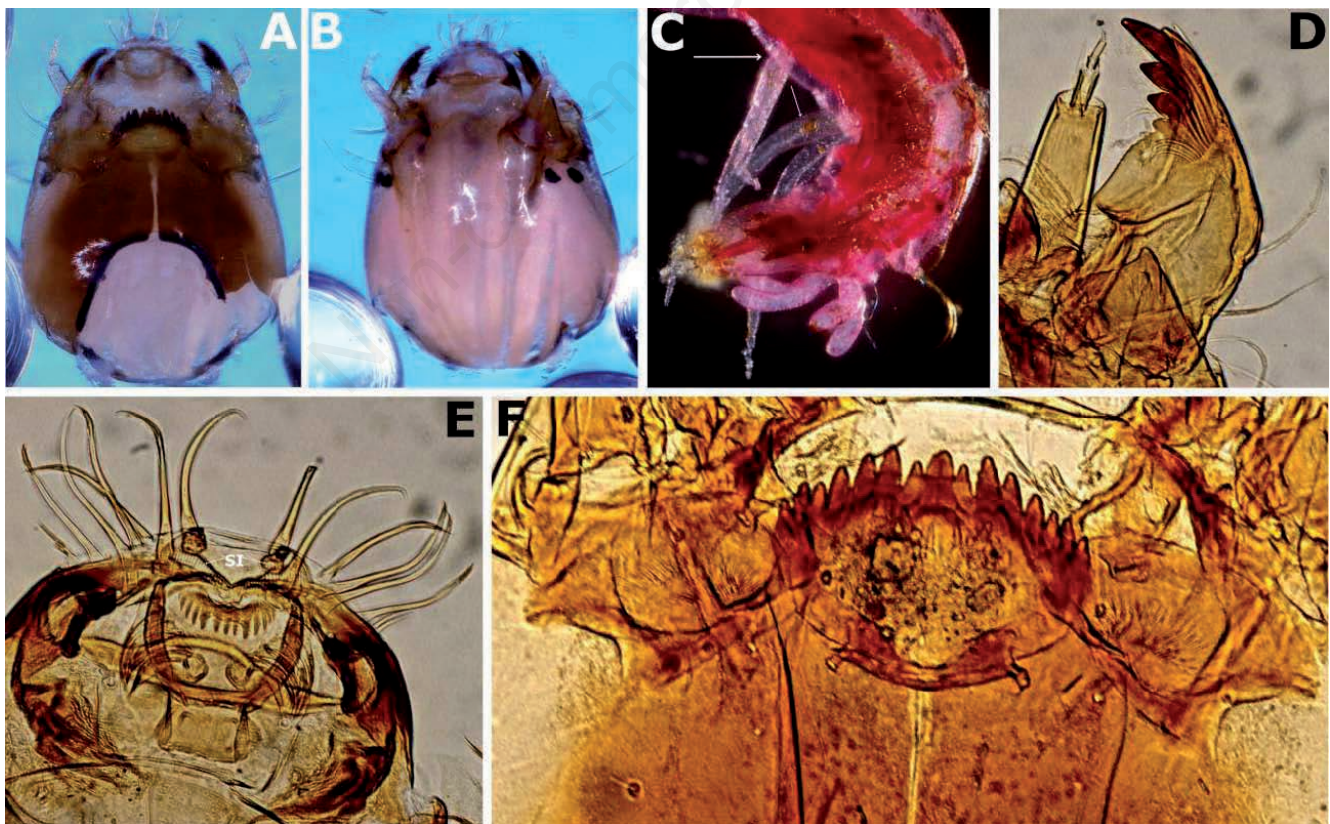


Figure 55. *Chironomus (Chironomus) decorus* group, larva (A-F). A) Head ventral view. B) Head dorsal view. C) Posterior portion of larva, arrows indicate the ventral tubules. D) Mandible. E) Labrum. F) Mentum.

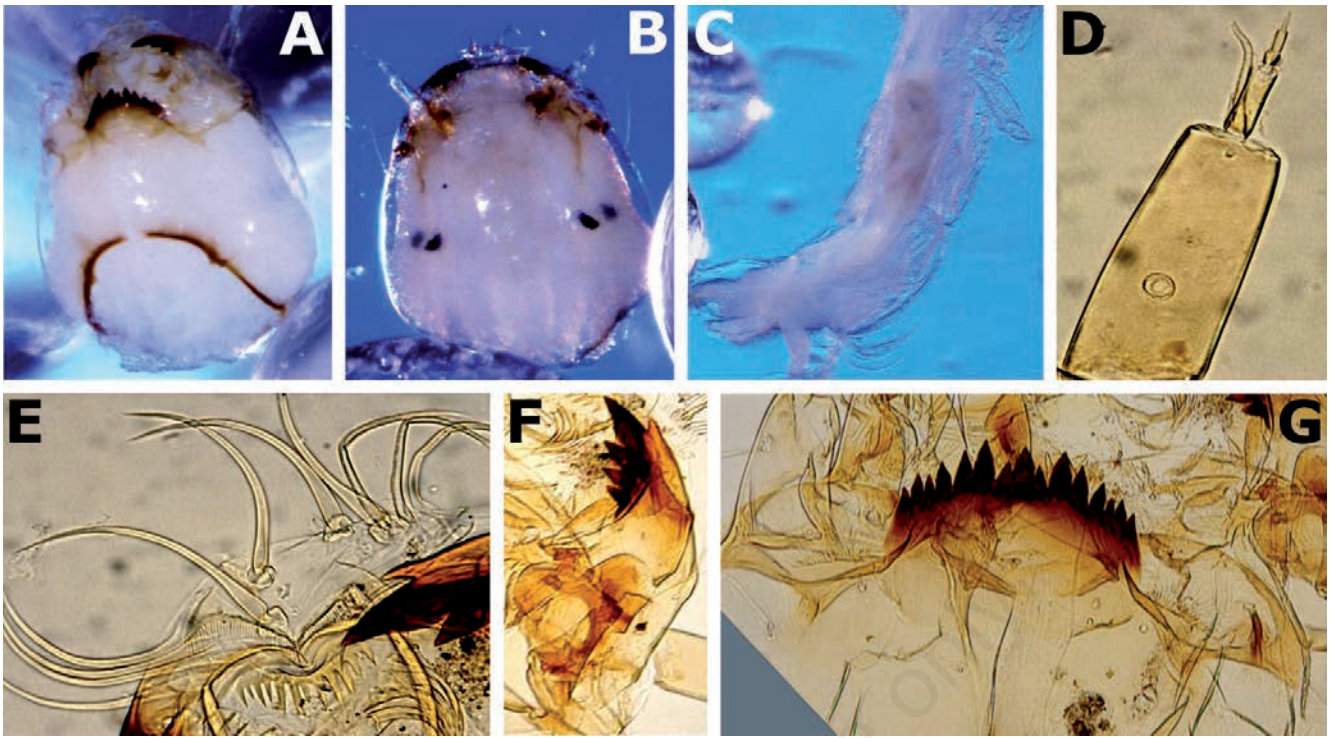


Figure 56. *Chironomus (Chironomus) salinarius* group, larva (A-G). A) Head ventral view. B) Head dorsal view. C) Posterior portion of larva. D) Antenna. E) Labrum. F) Mandible. G) Mentum.

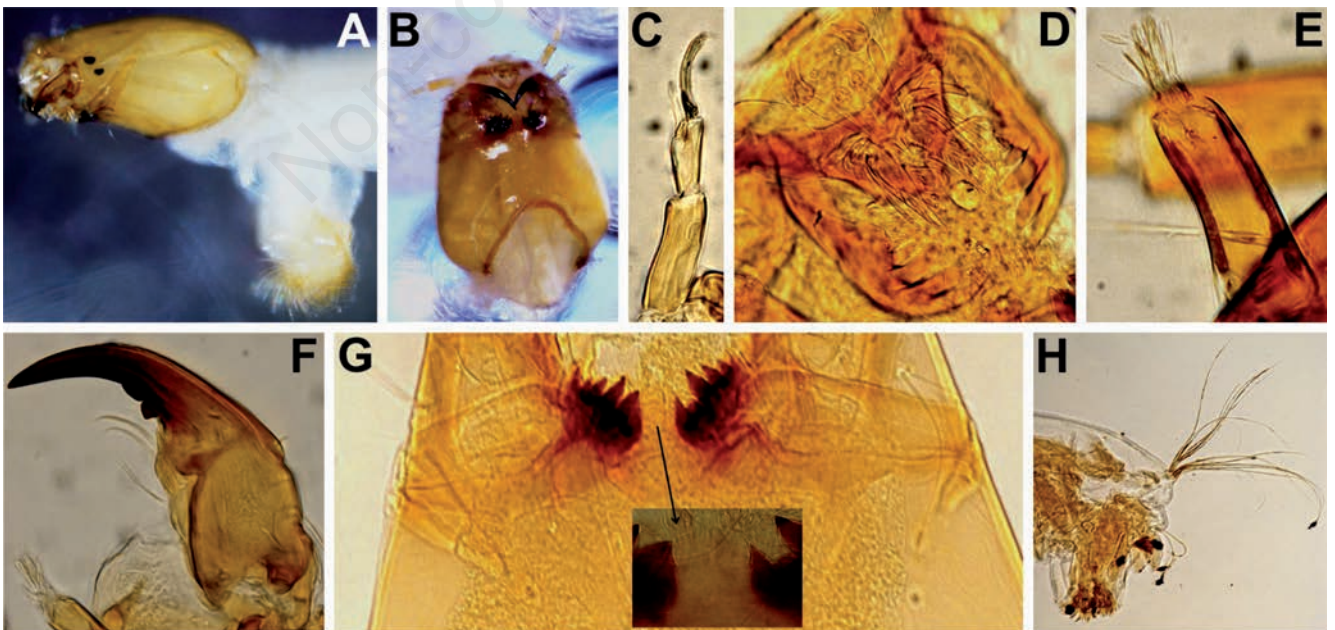


Figure 57. *Cryptochironomus blarina* (Townes, 1945), larva (A-H). A) Anterior portion of larva, head and anterior parapod. B) Head ventral. C) Antenna. D) Labrum. E) Maxillary palp. F) Mandible. G) Mentum, arrow indicated the inner tooth. H) Posterior portion of larva.



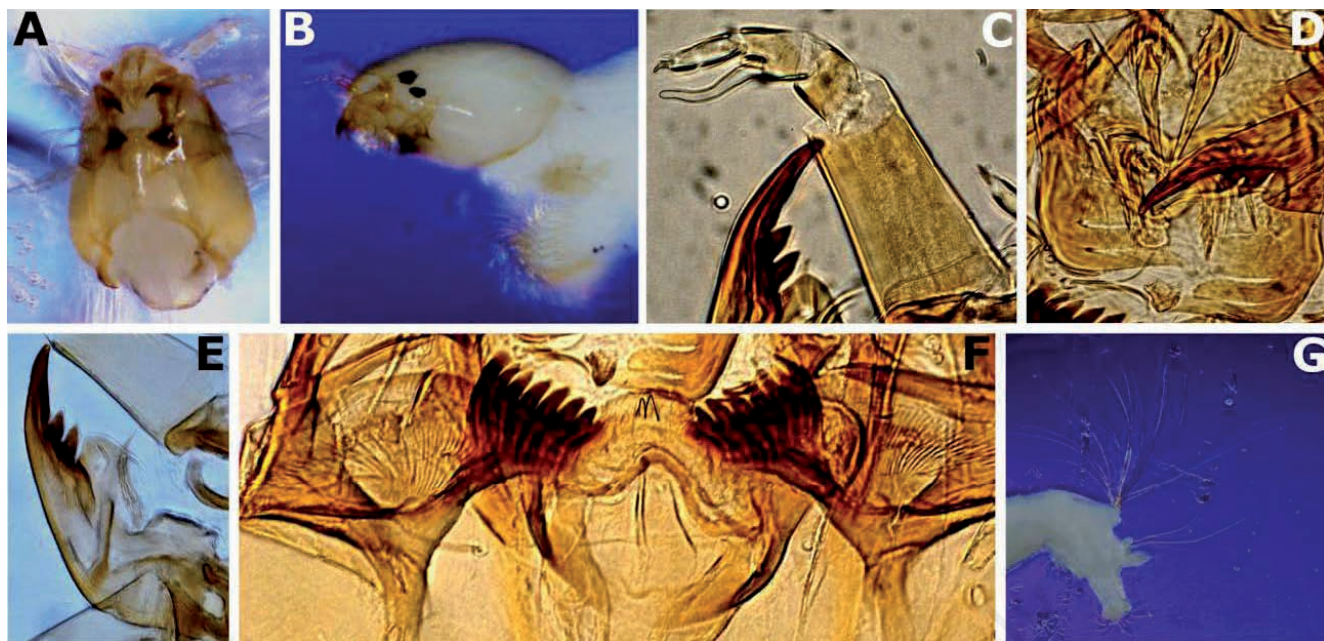


Figure 58. *Demicryptochironomus cuneatus* (Townes, 1945), larva (A-G). A) Head ventral view. B) Head lateral view. C) Antenna. D) Labrum. E) Mandible. F) Mentum. G) Posterior parapod.

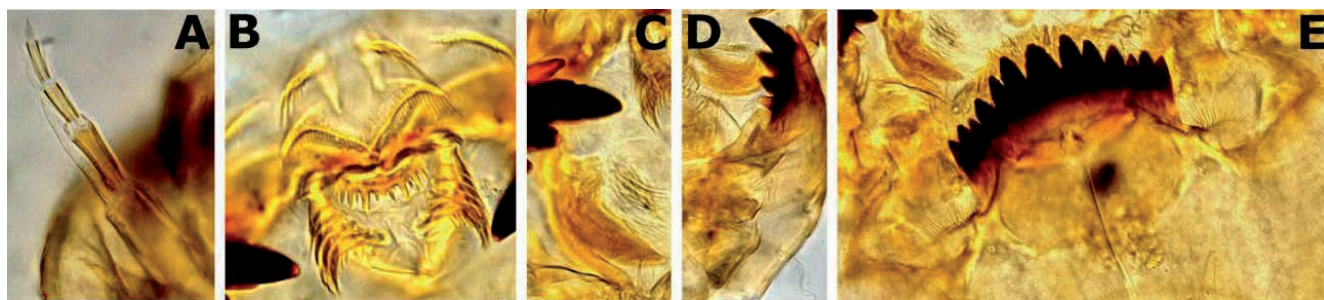


Figure 59. *Glyptotendipes* (*Glyptotendipes*) sp., larva (A-E). A) Antenna. B) Labrum. C) Premandible. D) Mandible. E) Mentum.

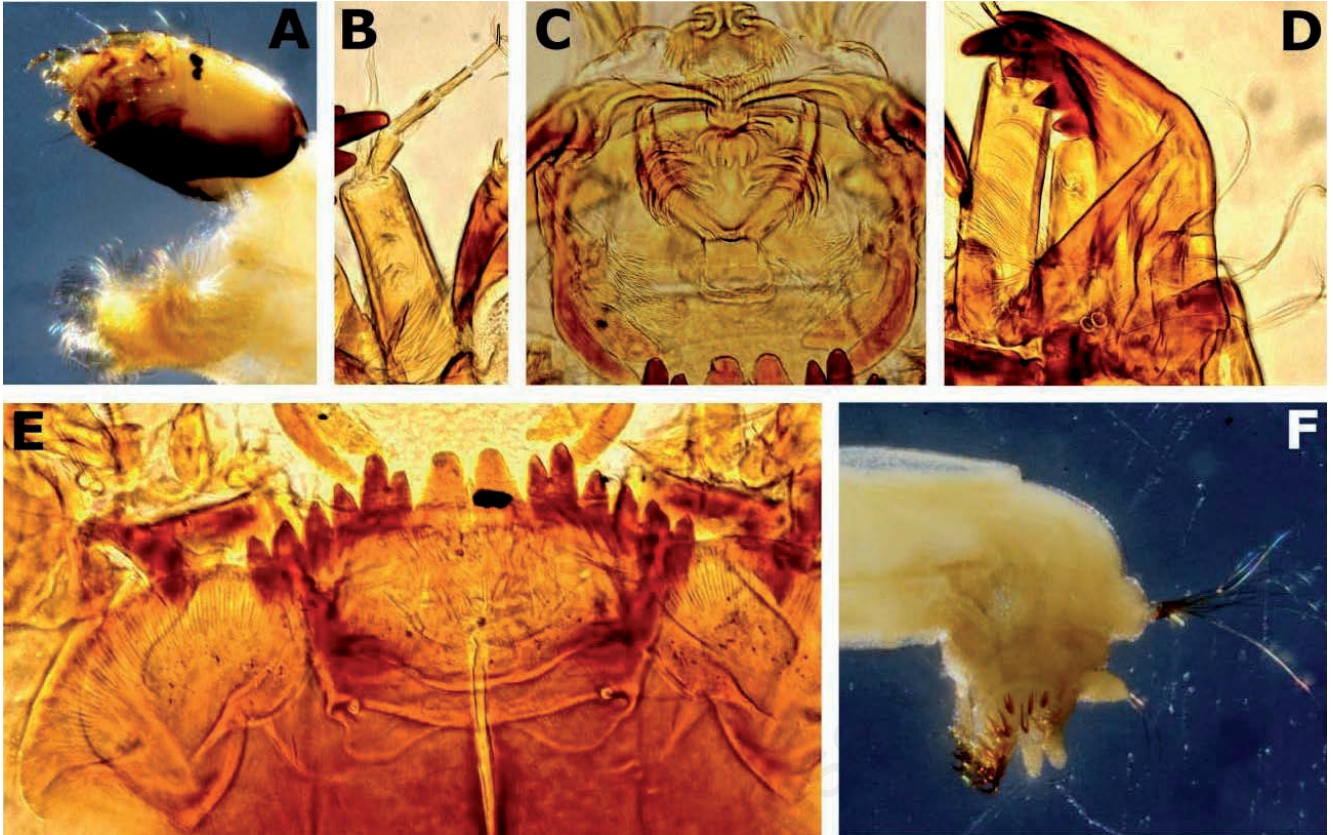


Figure 60. *Microtendipes (Microtendipes) pedellus* group, larva (A-F). A) Anterior portion of larva, head and anterior parapods. B) Antenna. C) Labrum. D) Mandible. E) Mentum. F) Posterior portion of larva.

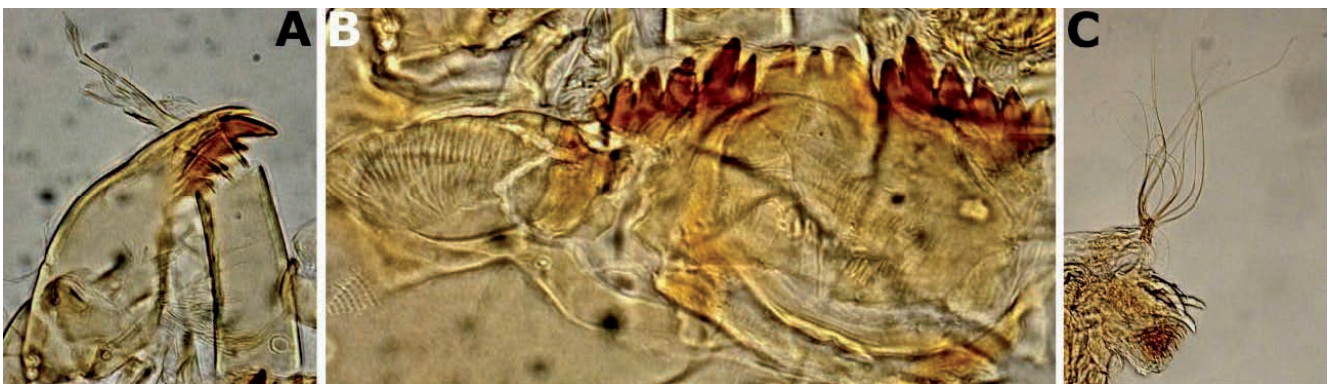


Figure 61. *Microtendipes (Microtendipes) rydalensis* group, larva (A-C). A) Antennae, mandible. B) Mentum. C) Posterior portion of larva.

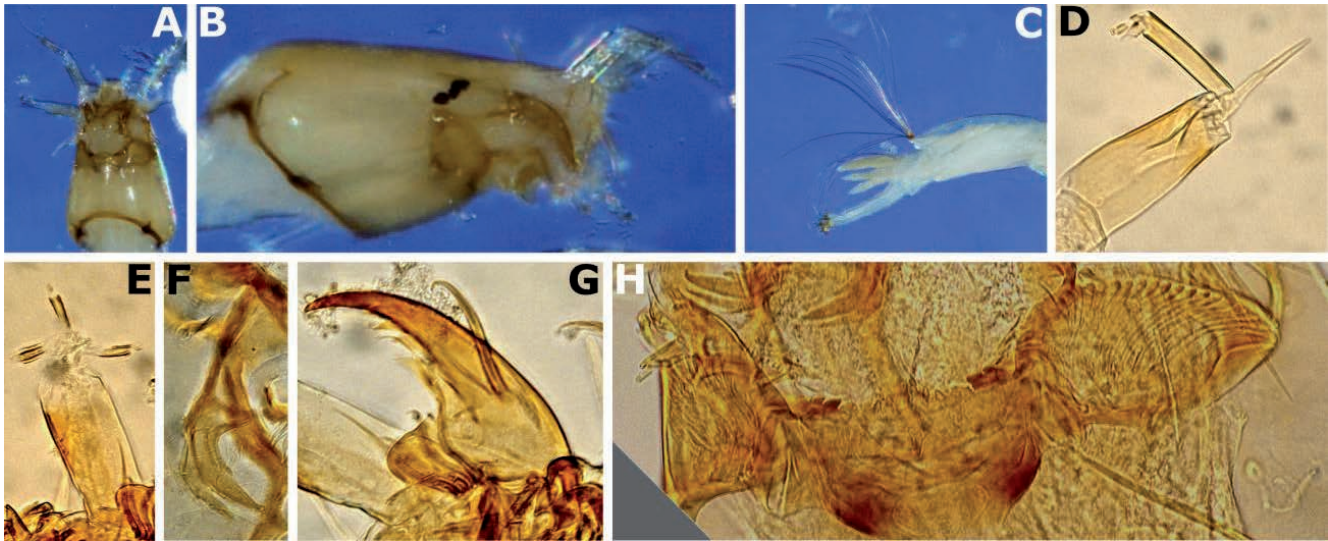


Figure 62. *Paracladapelma cf. rolli* Kirpichenko, 1949, larva (A-H). A) Head ventral view. B) Head dorsal. C) Posterior portion of larva. D) Antenna. E) Maxilla. F) Premandible. G) Mandible. H) Mentum.

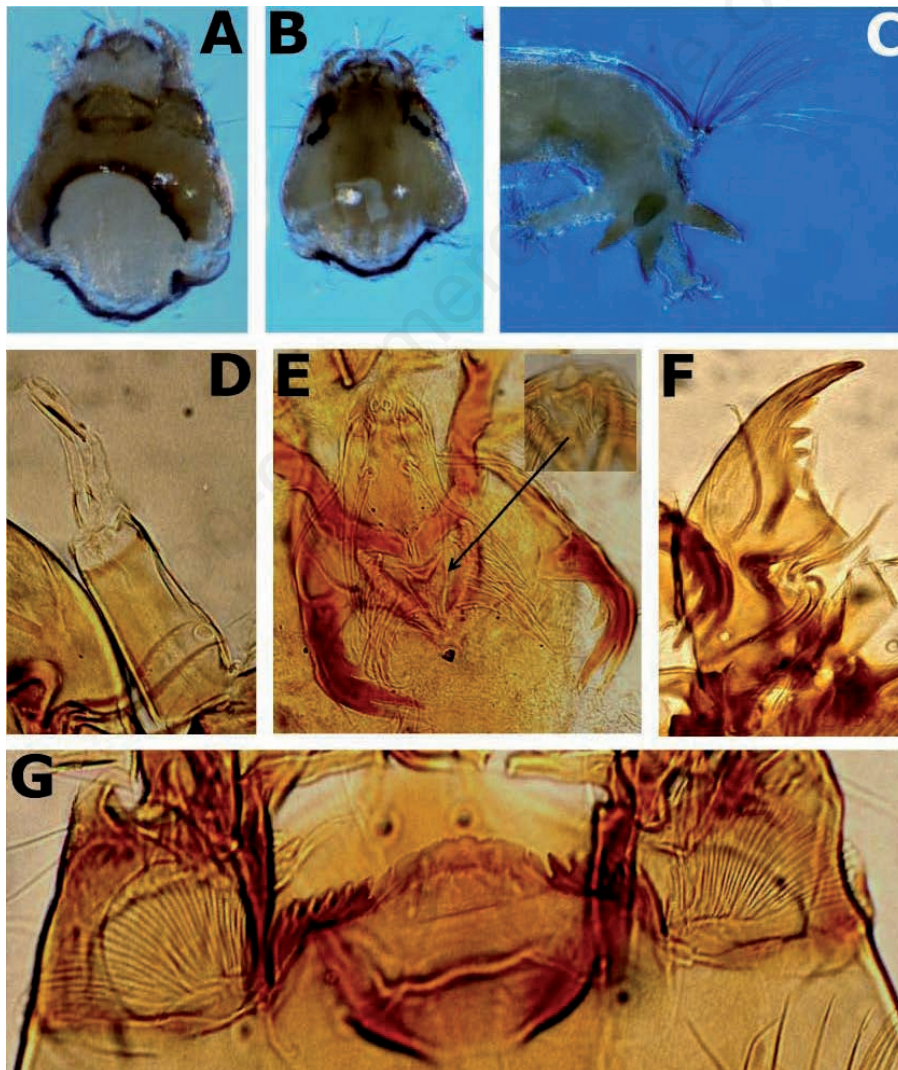


Figure 63. *Paracladapelma nereis* (Townes, 1945), larva (A-G). A) Head ventral view. B) Head dorsal view. C) Posterior portion of larva. D) Antenna. E) Labrum, arrow indicates the pecten epipharyngis. F) Mandible. G) Mentum.

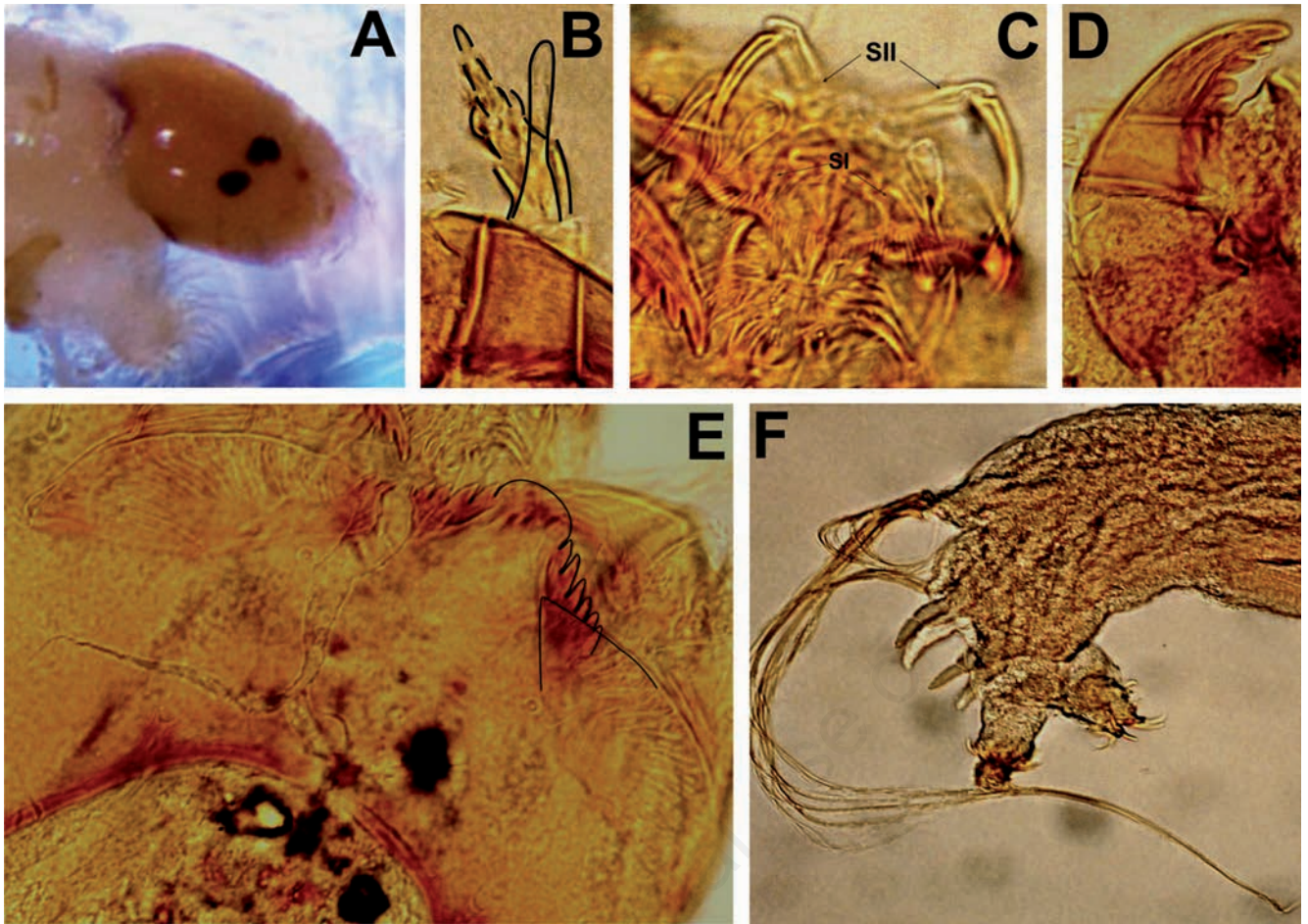


Figure 64. *Paralauterborniella nigrohalteralis* Malloch, 1915, larva (A-F). A) Head lateral view. B) Antenna. C) Labrum. D) Mandible. E) Mentum. F) Posterior portion of larva.

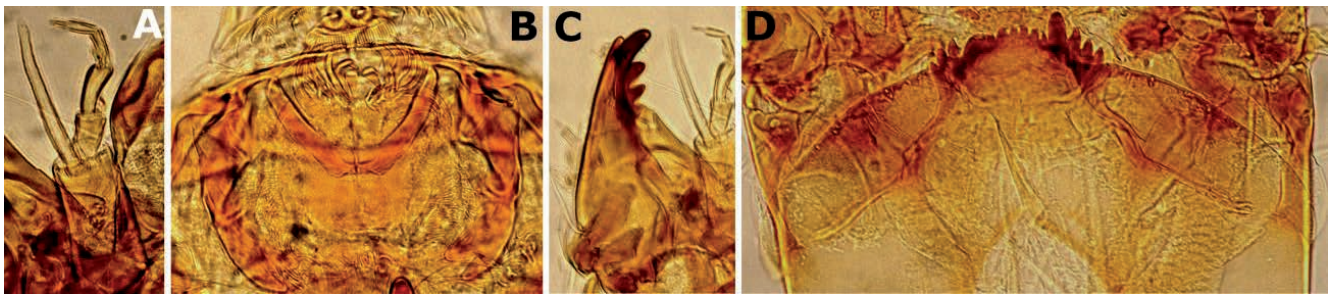


Figure 65. *Paratendipes* cf. *basidens* Townes, 1945, larva (A-D). A) Antenna. B) Labrum. C) Mandible. D) Mentum.

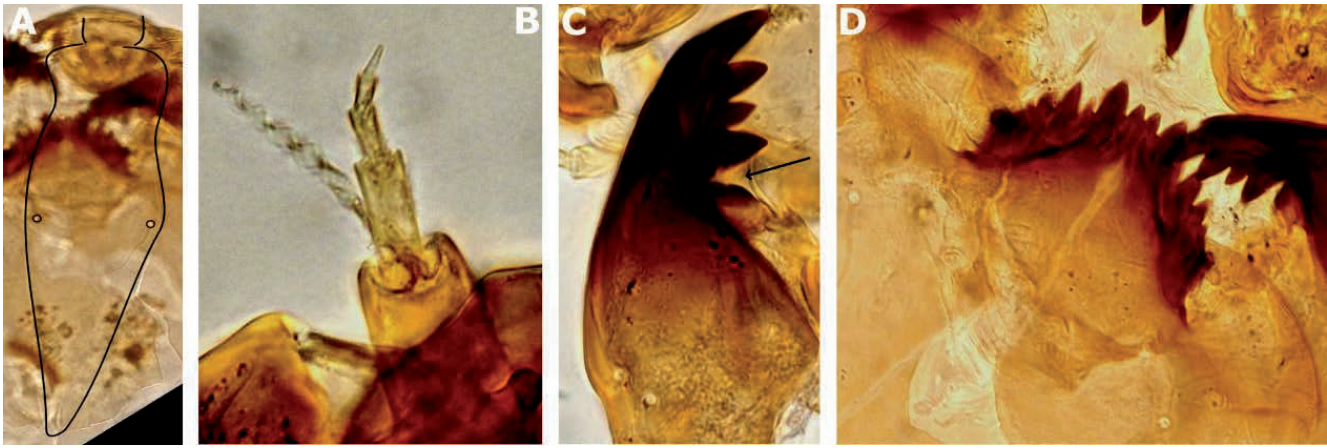


Figure 66. *Phaenopsectra punctipes* group, larva (A-D). A) Frontoclypeal sclerite. B) Antenna. C) Mandible. D) Mentum.

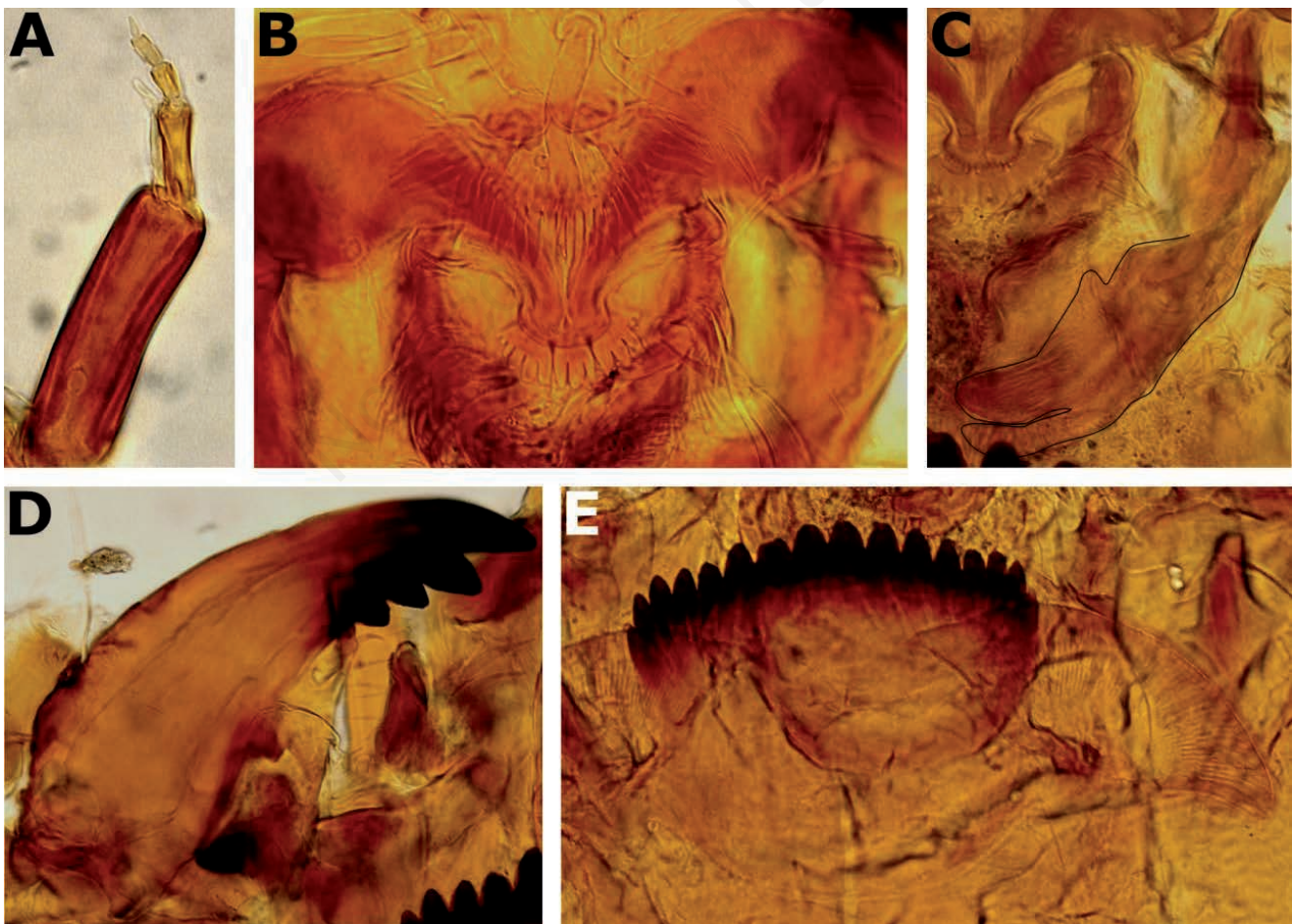


Figure 67. *Polypedilum (Polypedilum) fallax* group, larva (A-E). A) Antenna. B) Labrum. C) Premandible. D) Mandible. E) Mentum.

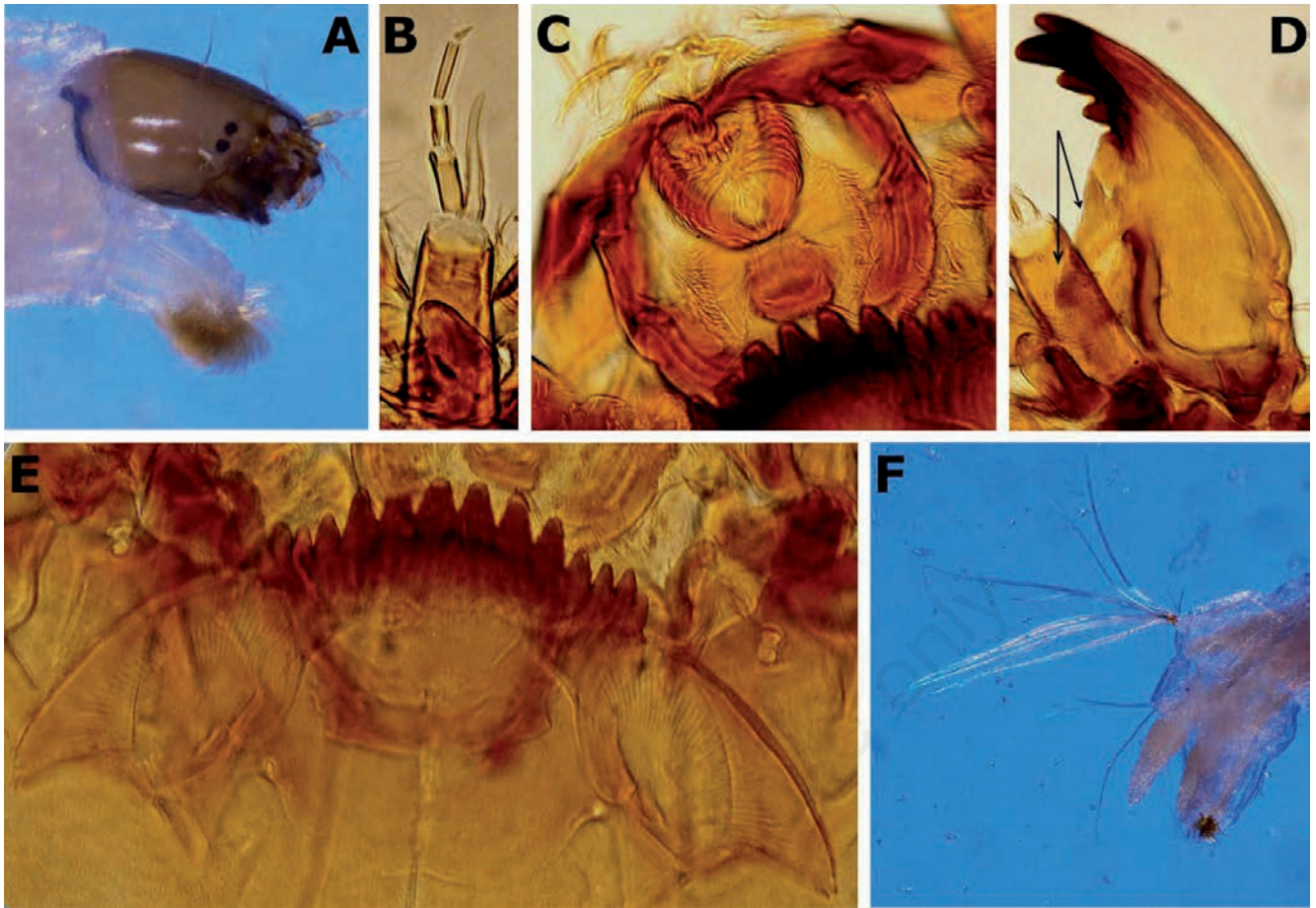


Figure 68. *Polypedilum (Polypedilum) laetum* group, larva (A-F). A) Anterior portion of larva, head and anterior parapods. B) Antenna. C) Labrum. D) Mandible, arrows indicate the inner spines. E) Mentum. F) Posterior portion of larva.

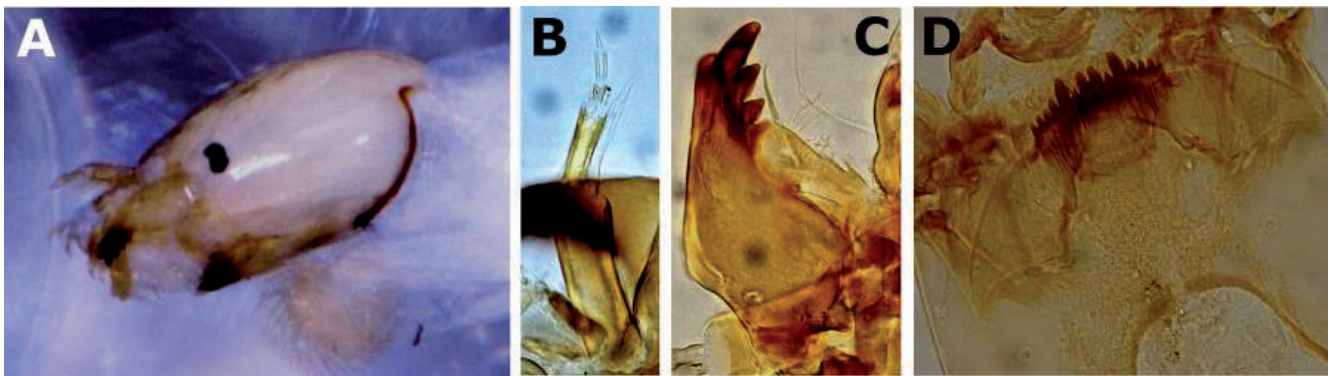


Figure 69. *Polypedilum (Tripodura) scalaenum* group, larva (A-D). A) Head lateral view. B) Antenna. C) Mentum. D) Mentum.

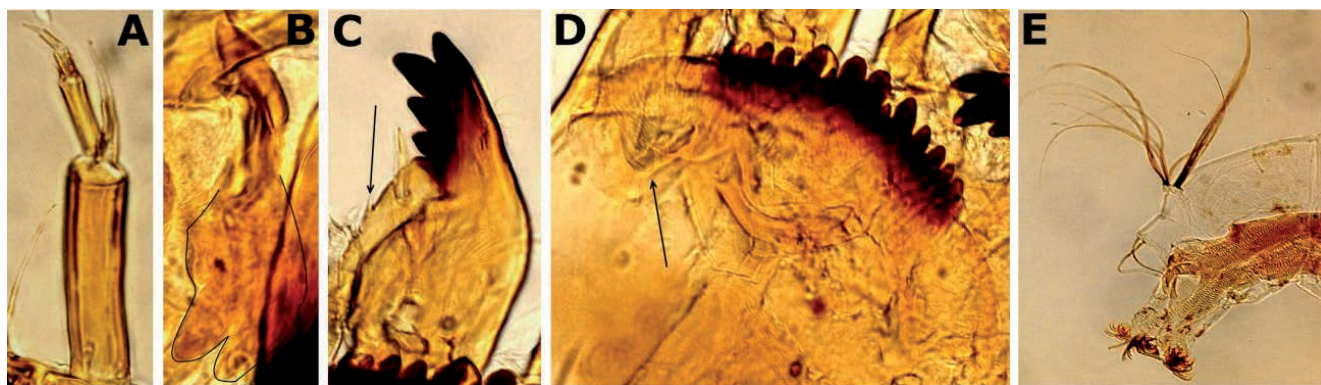


Figure 70. *Polypedilum (Uresipedilum) flavum* (Johannsen, 1905), larva (A-E). A) Antenna. B) Premandible. C) Mandible, arrow indicates the inner spines. D) Mentum, arrow indicates the posterior lobe of VmP. E) Posterior portion of larva.

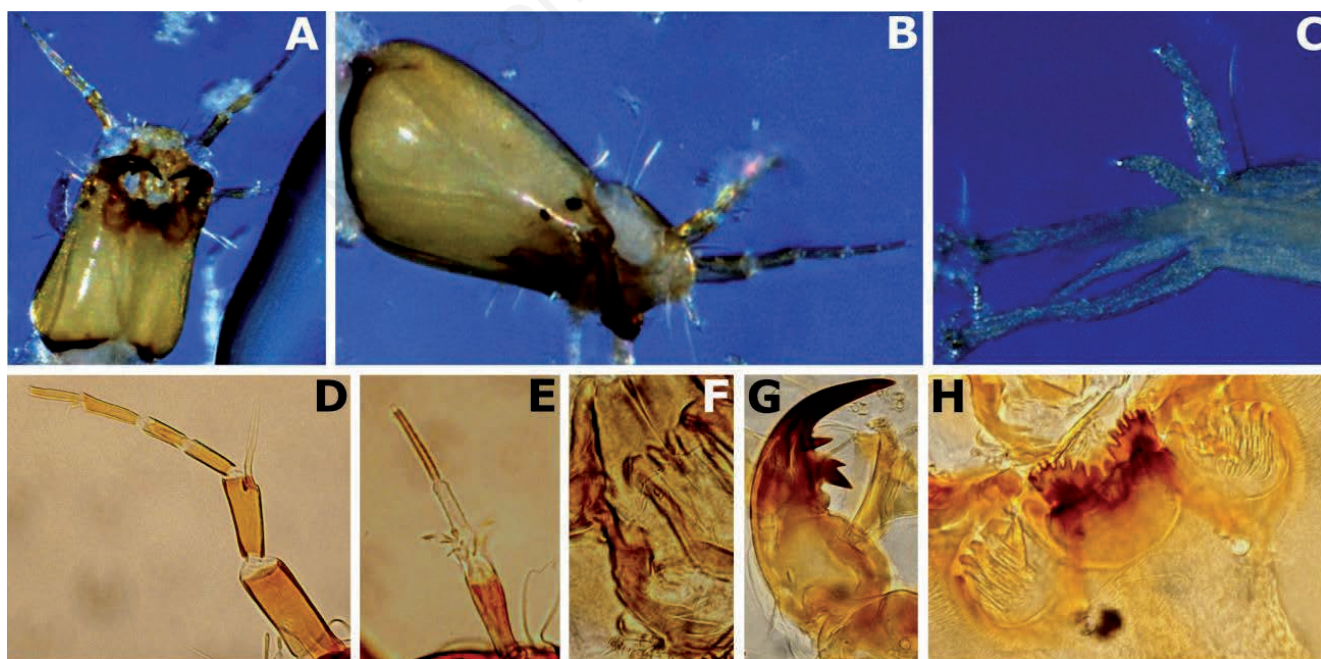


Figure 71. *Robackia claviger* (Townes, 1945), larva (A-H). A) Head ventral view. B) Head lateral view. C) Posterior portion of larva. D) Antenna. E) Maxillary palp. F) Premandible. G) Mandible. H) Mentum.

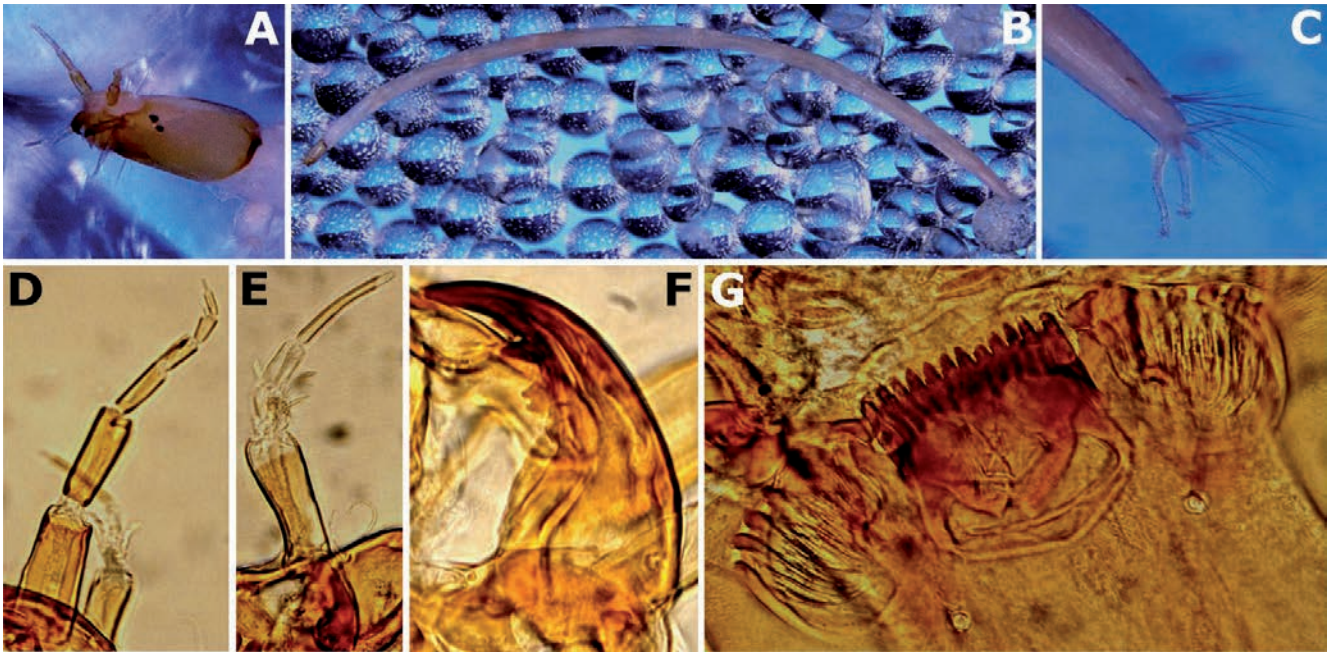


Figure 72. *Robackia demeijerei* (Kruseman, 1933), larva (A-G). A) Head lateral view. B) Larva lateral view. C) Posterior portion of larva. D) Antenna. E) Maxillary palp. F) Mandible. G) Mentum.

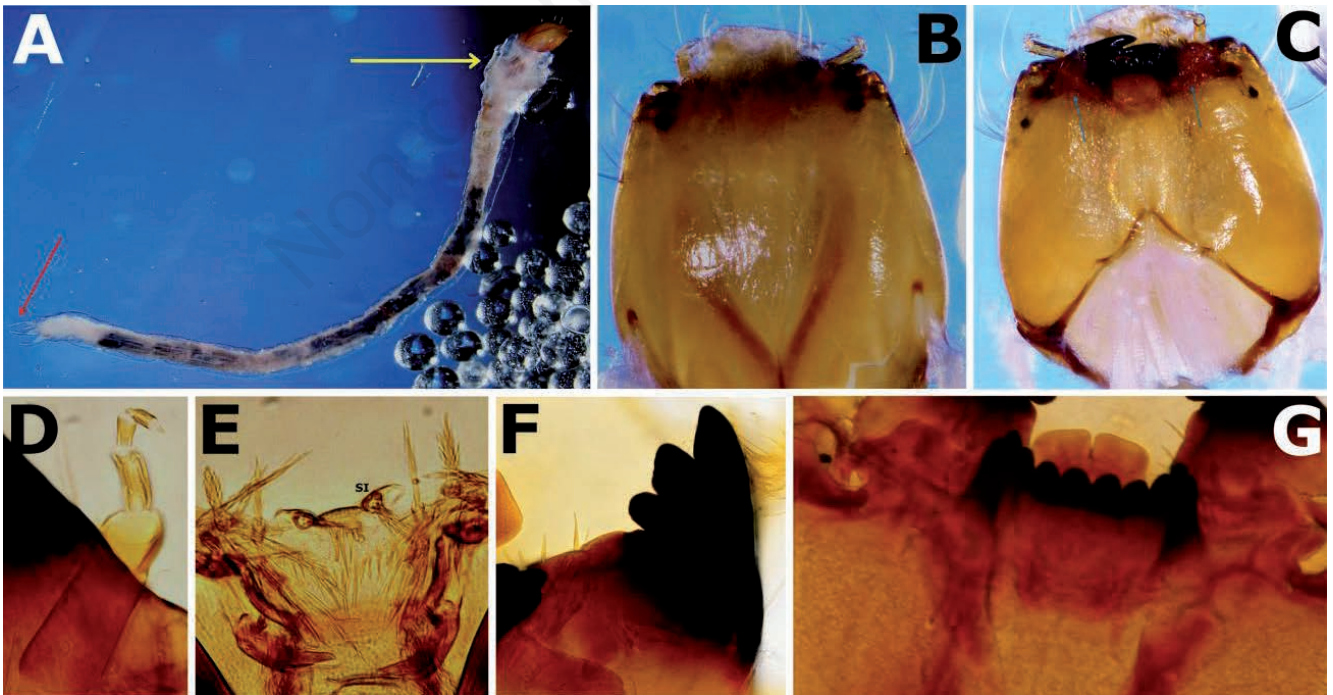


Figure 73. *Stenochironomus (Stenochironomus) sp.*, larva (A-G). A) Larva dorsolateral view, yellow arrow indicates the expanded thoracic segments and red arrow indicates the anal tubules. B) Head dorsal view. C) Head ventral view. D) Antenna. E) Labrum. F) Mandible. G) Mentum.



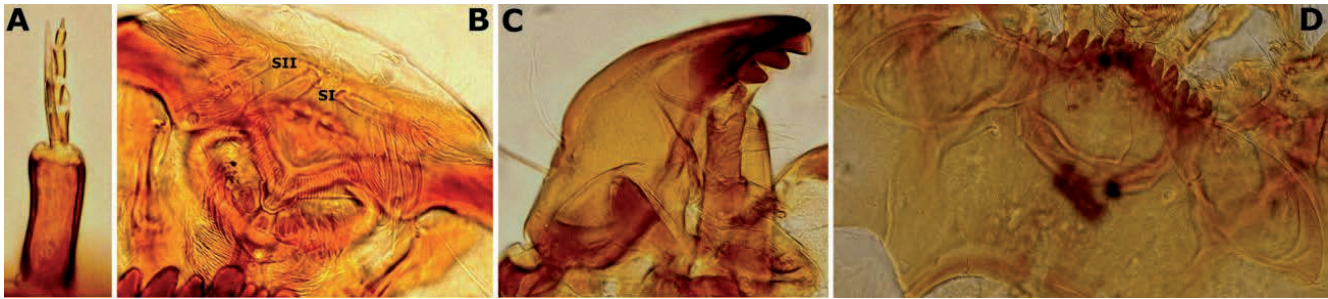


Figure 74. *Stictochironomus* sp., larva (A-D). A) Antenna. B) Labrum. C) Mandible. D) Mentum.

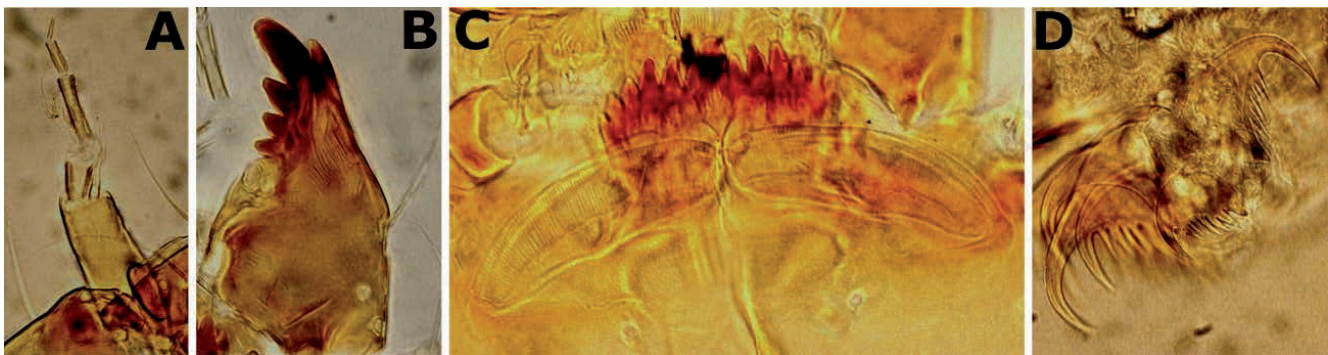


Figure 75. *Cladotanytarsus* sp., larva (A-D). A) Antenna. B) Mandible. C) Mentum. D) Claws of posterior parapod.

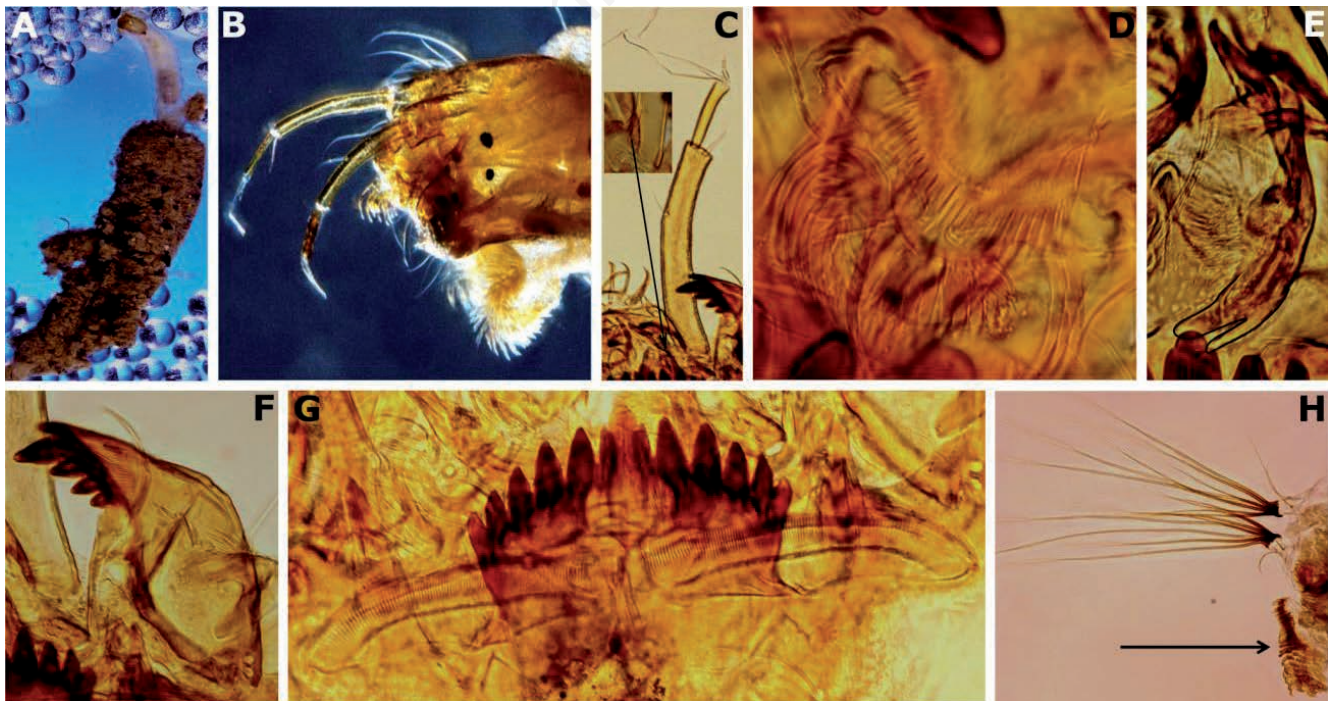


Figure 76. *Micropsectra polita* (Malloch, 1919), larva (A-H). A) Larvae lateral view and larval case. B) Head lateral view. C) Antenna, arrow indicates the spur of antennal pedestal. D) Labrum. E) Premandible. F) Mandible. G) Mentum. H) Posterior parapod.

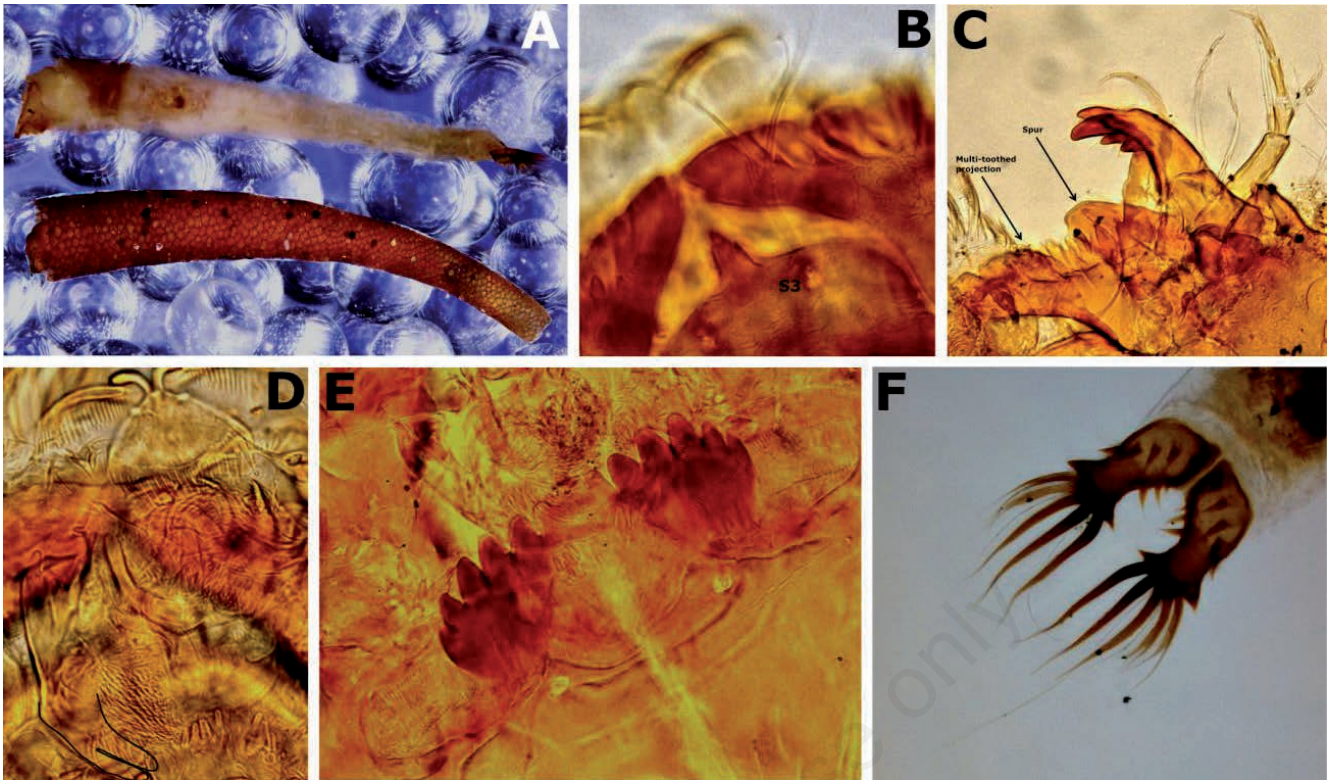


Figure 77. *Neostempellina reissi* Caldwell, 2000, larva (A-F). A) Larva and larval case lateral view. B) Clypeal setae S3. C) Antenna, antennal pedestal spur and multi-toothed projection, and mandible. D) Labrum. E) Mentum. F) Posterior portion of larva, sclerotized procercus.

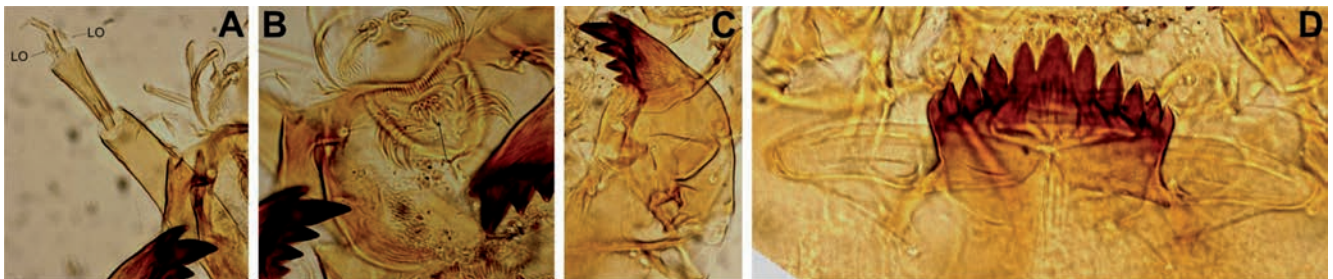


Figure 78. *Paratanytarsus* sp., larva (A-D). A) Antenna. B) Labrum. C) Mandible. D) Mentum.

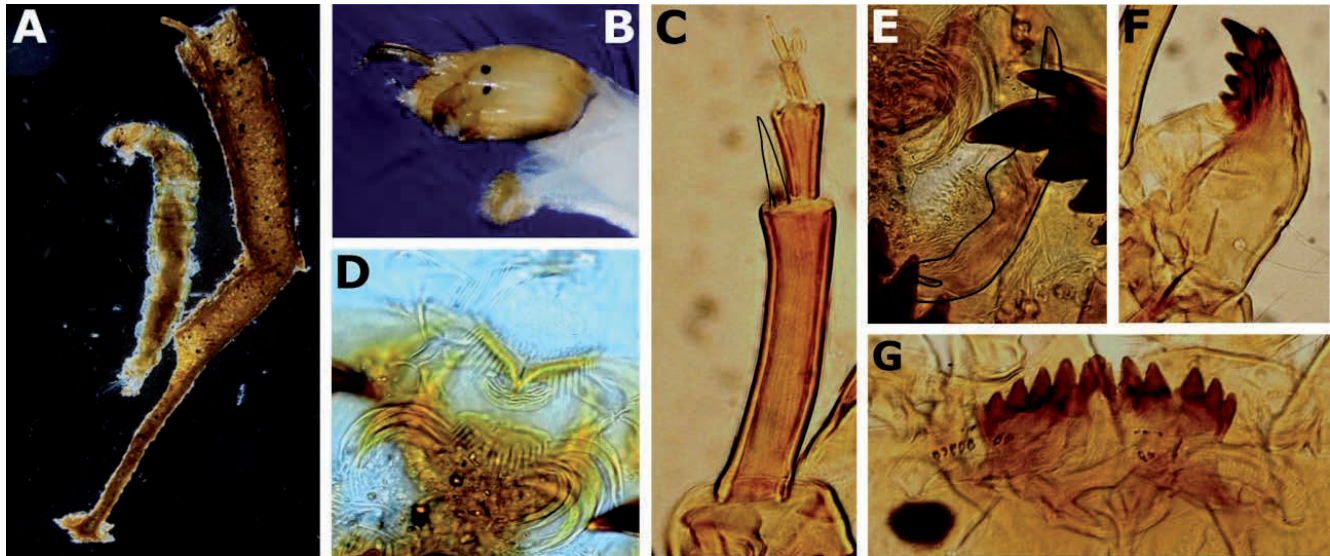


Figure 79. *Rheotanytarsus* sp. 1, larva (A-G). A) Larva and larval case lateral view. B) Head lateral view. C) Antenna. D) Labrum. E) Premandible. F) Mandible. G) Mentum.

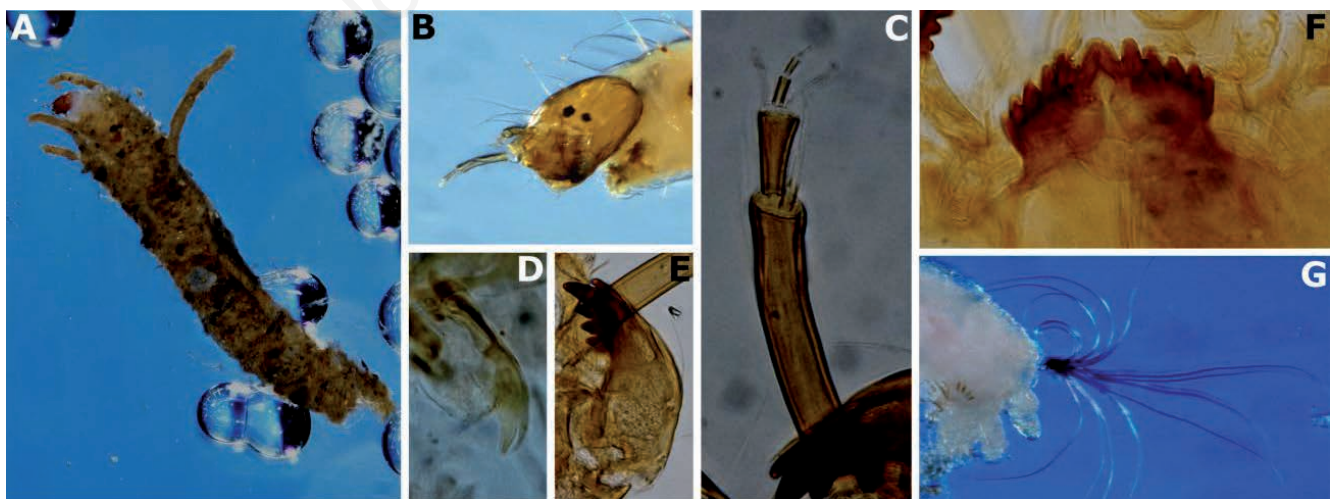


Figure 80. *Rheotanytarsus* sp. 2, larva (A-G). A) Larva in larval case lateral view. B) Anterior portion of larva, head and anterior parapod. C) Antenna. D) Premandible. E) Mandible. F) Mentum. G) Posterior portion of larva.

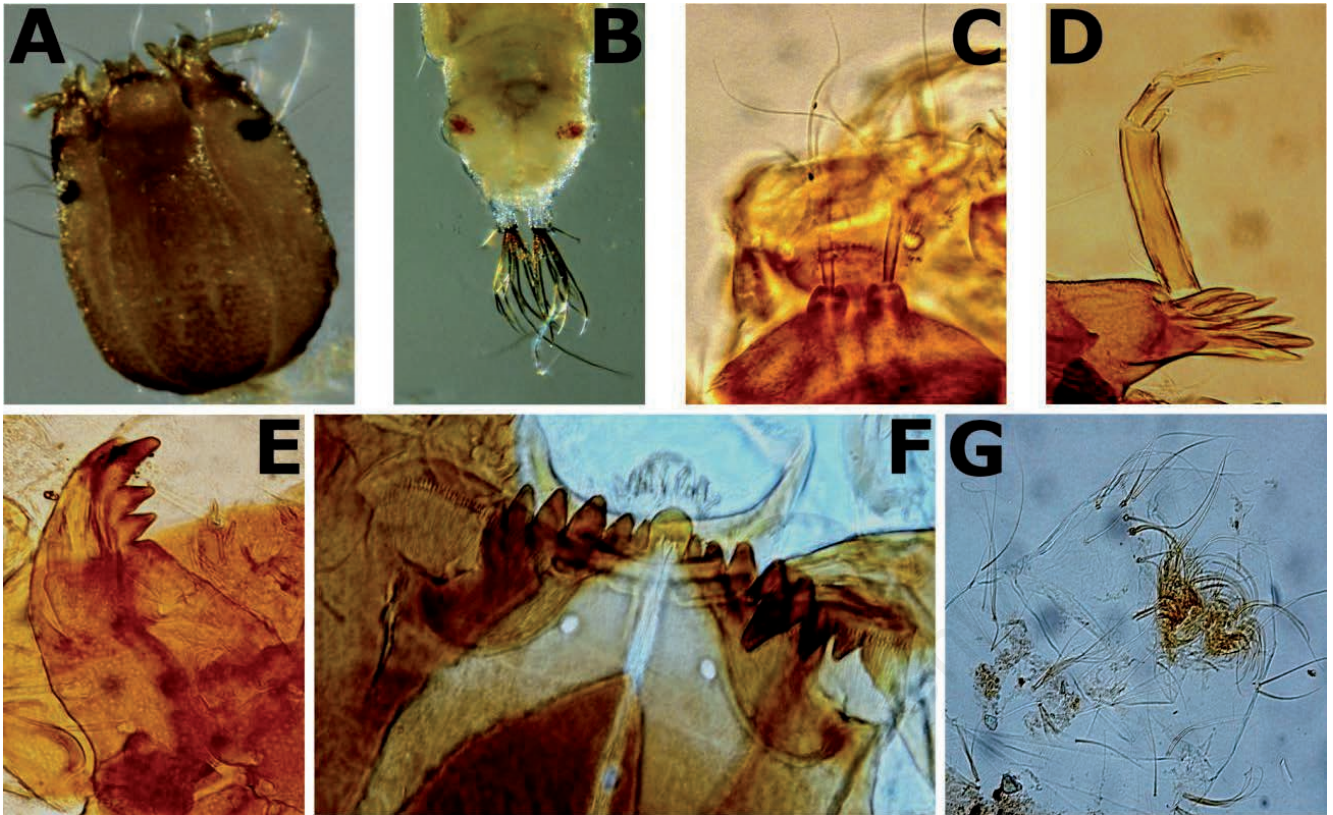


Figure 81. *Stempellina* sp., larva (A-G). A) Head dorsal view. B) Posterior portion of larva ventral view. C) Clypeal setae S3. D) Antenna and multi-spined antennal pedestal. E) Mandible. F) Mentum. G) Body segments I-II.

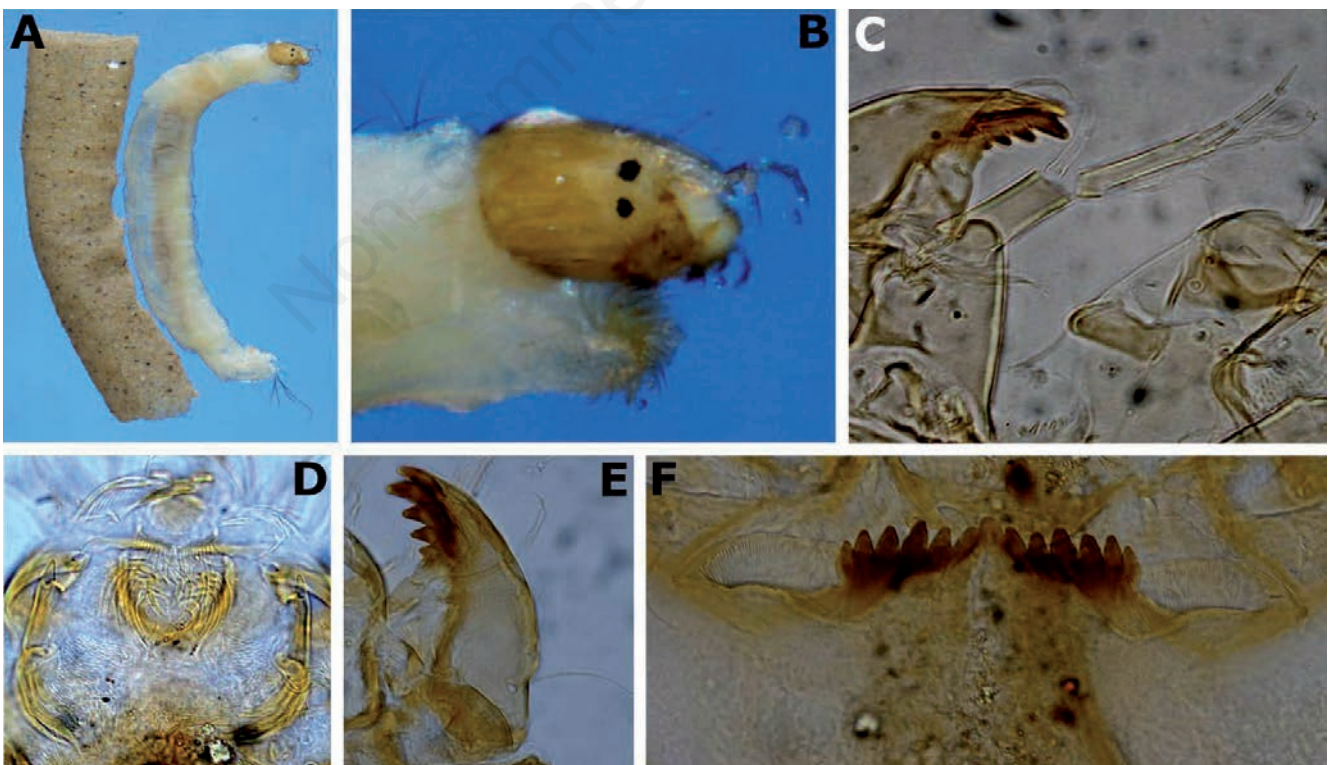


Figure 82. *Stempellinella* sp., larva (A-F). A) Larva and larval case lateral view. B) Anterior portion of larva, head and anterior parapods. C) Antenna. D) Labrum. E) Mandible. F) Mentum.

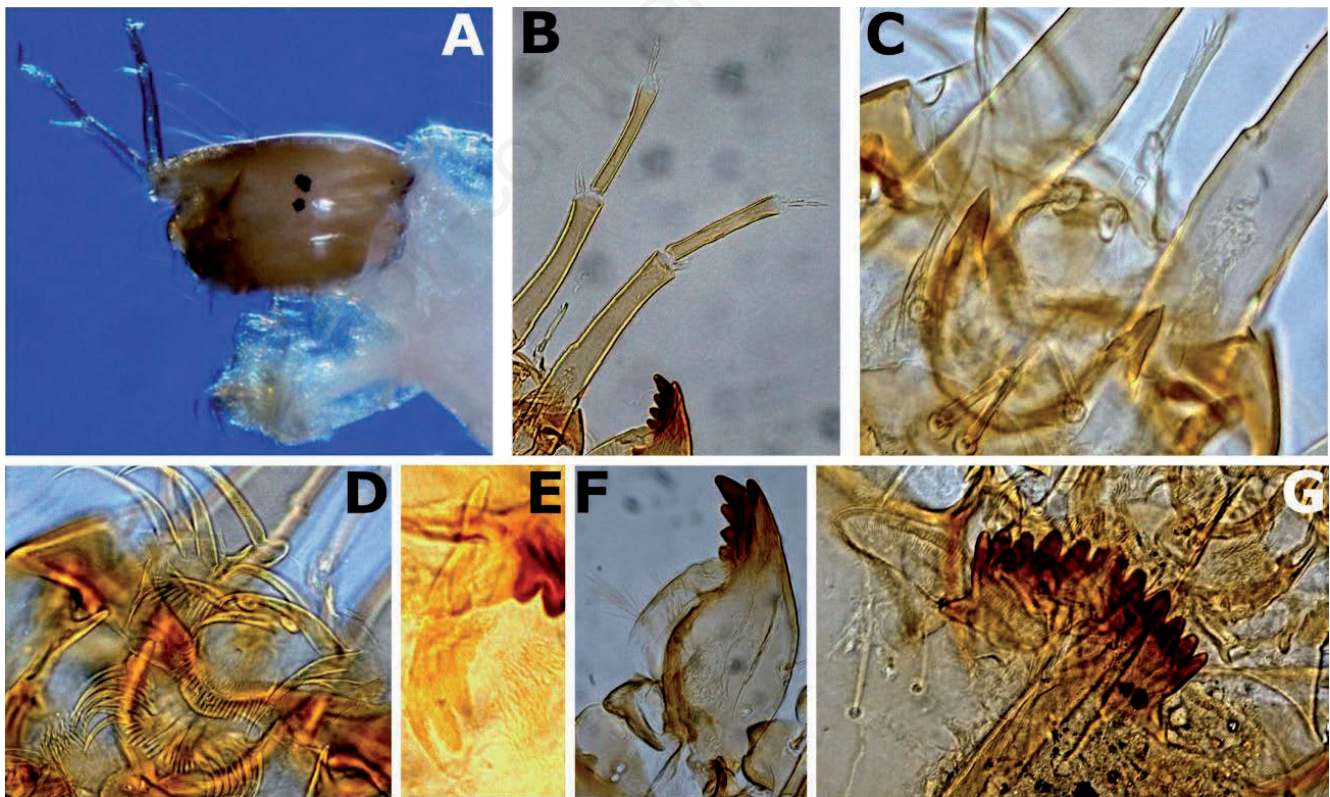


Figure 83. *Tanytarsus chinensis* group, larva (A-G). A) Anterior portion of larva, head and anterior parapods. B) Antennae. C) Antennal pedestals. D) Labrum. E) Premandible. F) Mandible. G) Mentum.