

Figure 56. *Linnophyes* sp. 2, larva (A-E). A) Antenna; B) Mandible; C) Mentum; D) VmP, arrow indicates the base; E) Posterior portion of the larva.

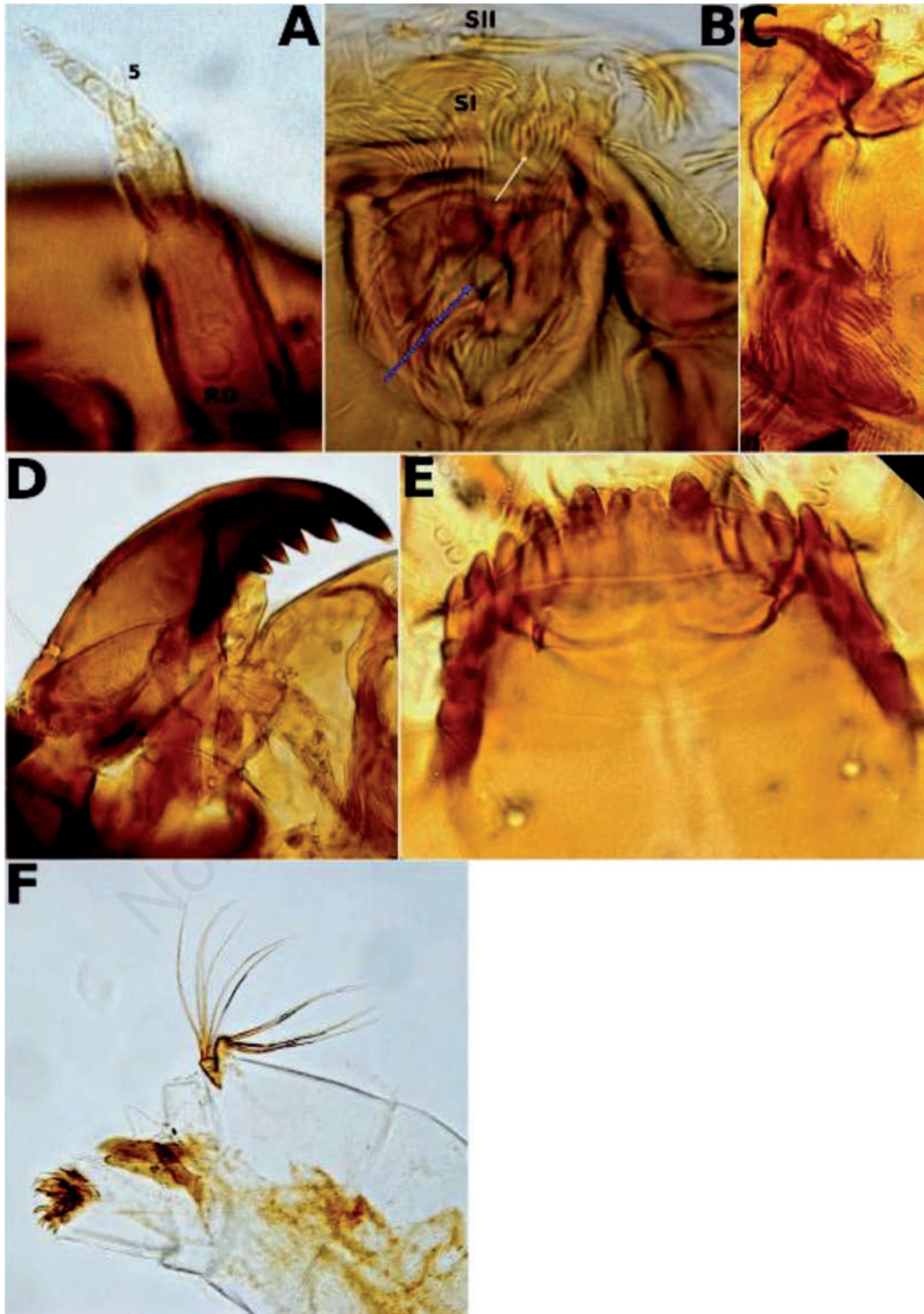


Figure 57. *Metriocnemus (Metriocnemus) eurynotus* (Holmgren), larva (A-F). A) Antenna; B) Labrum, white arrow indicates the labral lamellae, blue arrow indicates the pecten epipharyngis; C) Premandible; D) Mentum; E) Mentum; F) Posterior portion of the larva.

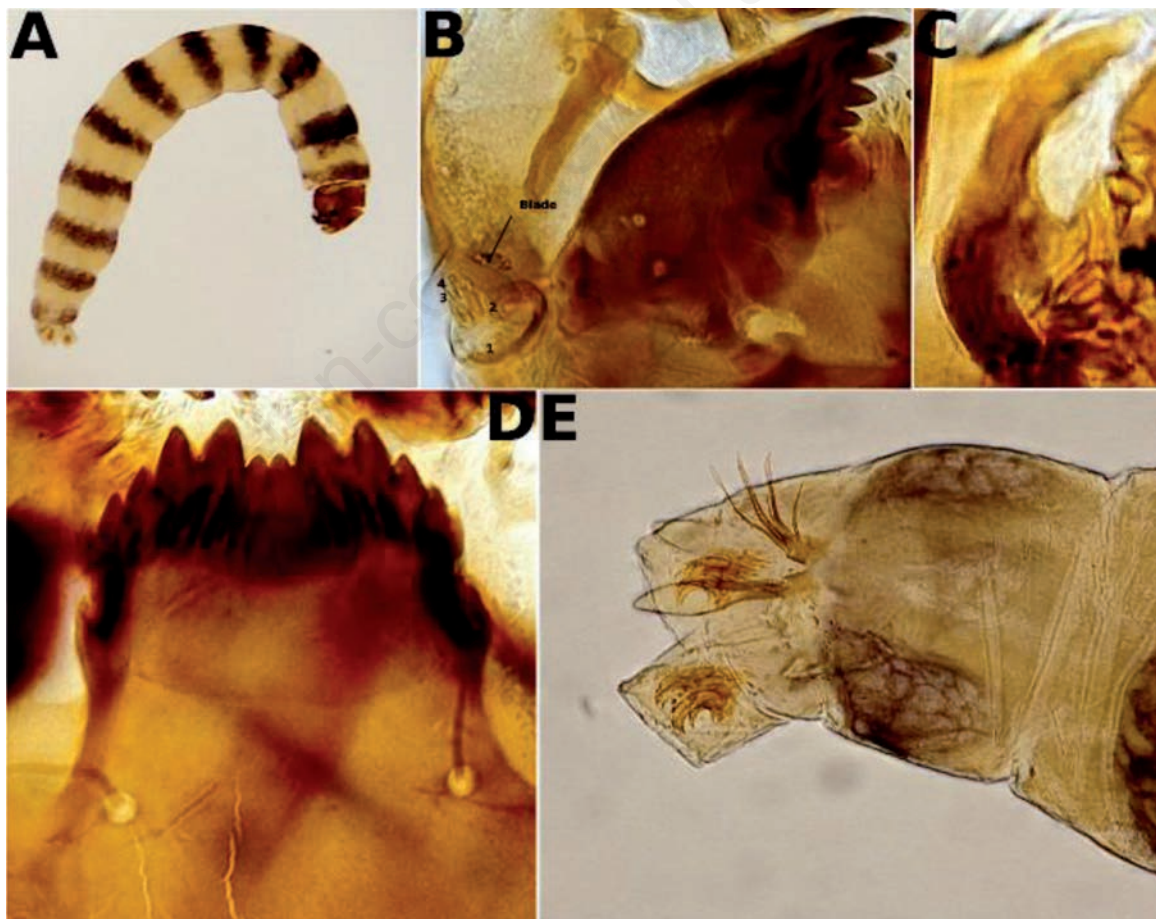


Figure 58. *Metriocnemus (Metriocnemus) cf. fuscipes* (Meigen), larva (A-E). A) Larva; B) Antenna and mandible; C) Premandible; D) Mentum; E) Posterior portion of the larva.

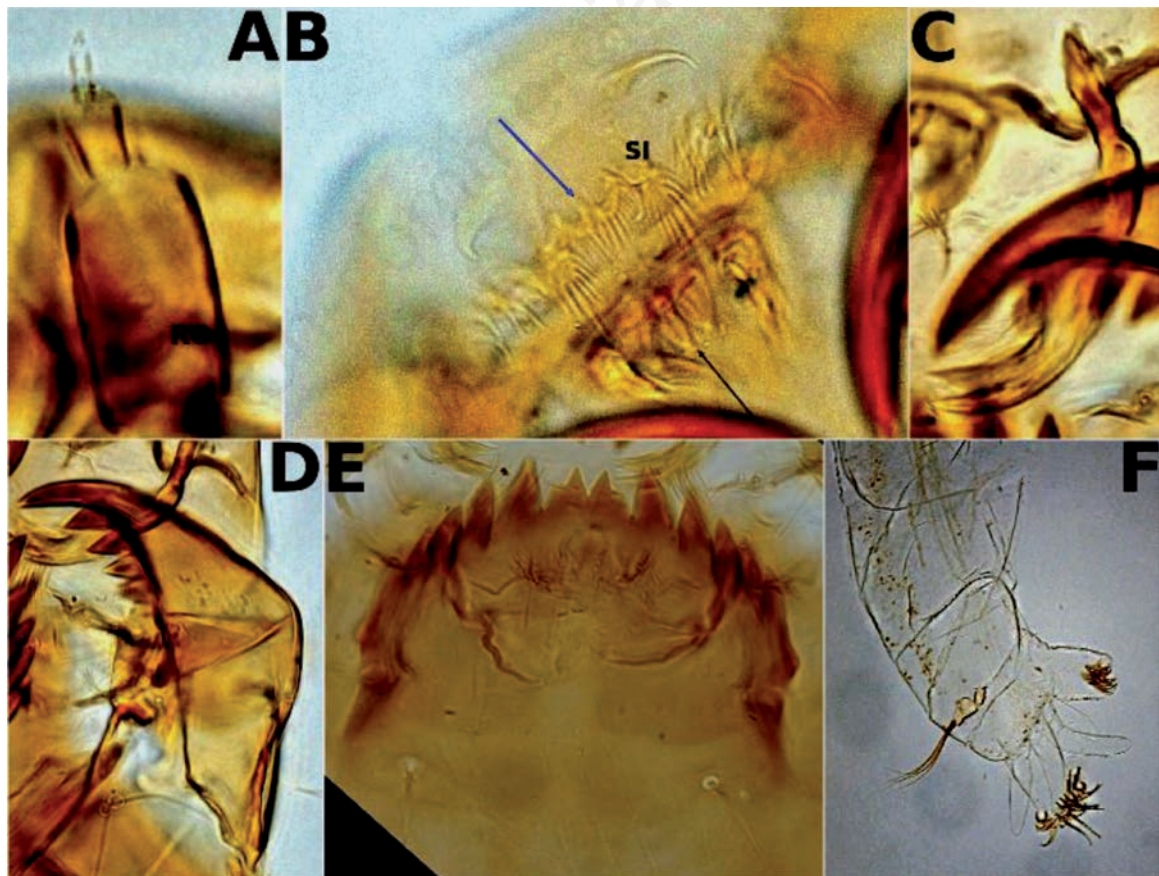


Figure 59. *Metriocnemus* sp. 1, larva (A-F). A) Antenna; B) Labrum, blue arrow indicates the labral lamella, white arrow indicates the pecten epipharyngis; C) Premandible; D) Mandible; E) Mentum; F) Posterior portion of the larva.

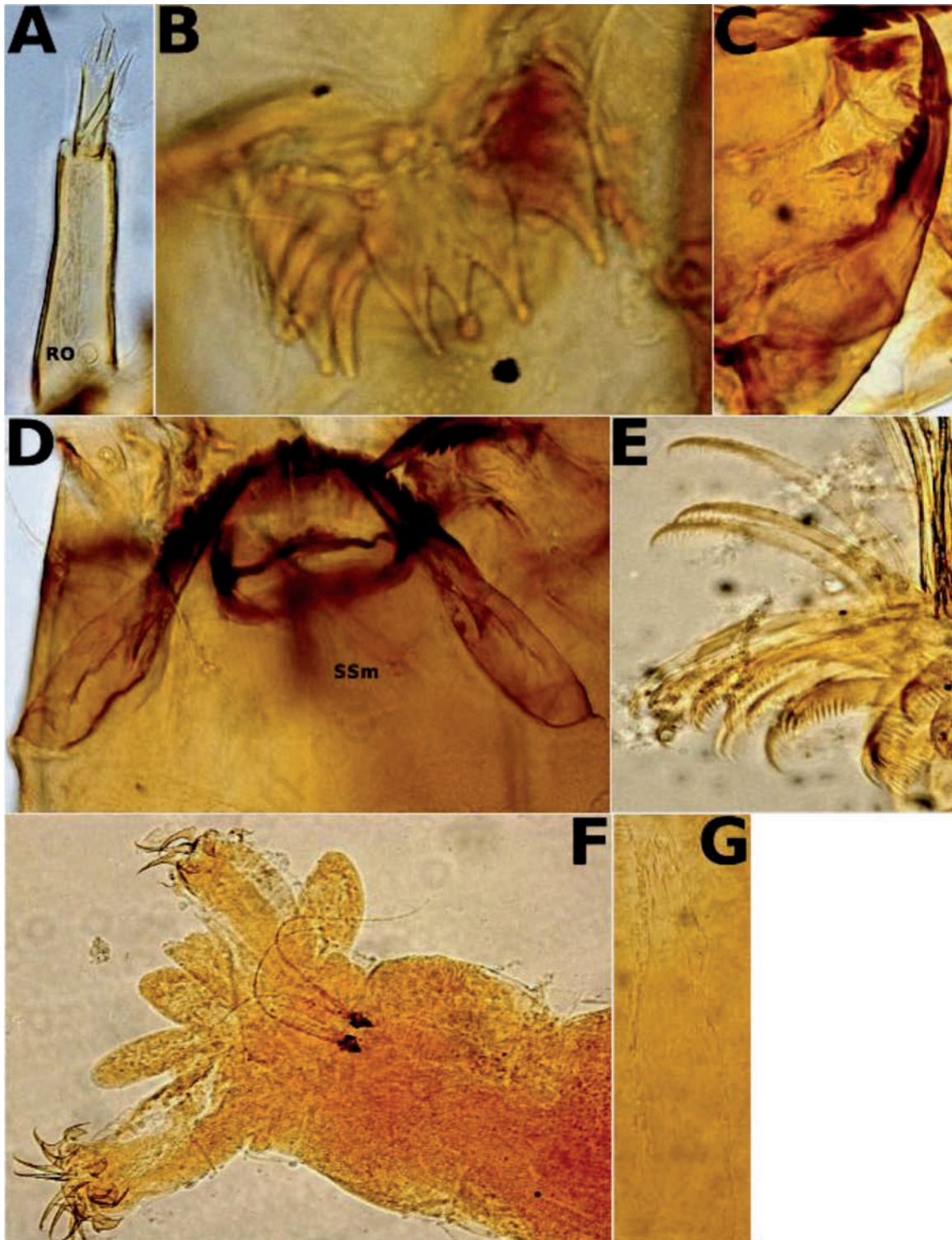


Figure 60. *Nanocladius (Nanocladius) dichromus* group larva (A-G). A) Antenna; B) Pecten epipharyngis; C) Mandible; D) Mentum; E) Claws of anterior parapod; F) Posterior portion of the larva; G) Thoracic horn of the pupa.



Figure 61. *Nanocladius (Plecopteracoluthus)* sp.1, larva (A-G). A) Antenna; B) Pecten epipharyngis and premandibles; C) Mandible; D) Mentum; E) Claws of anterior parapods; F) Procercus; G) Claws of posterior parapods.

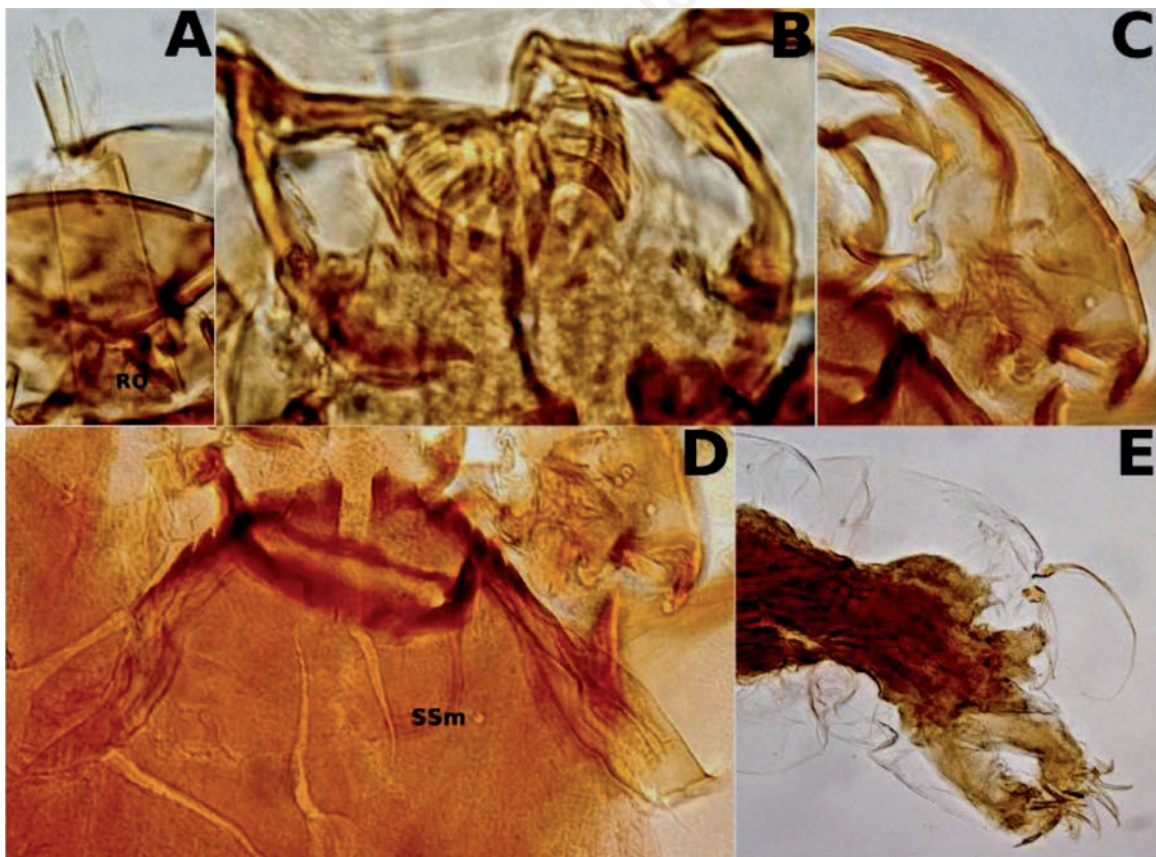


Figure 62. *Nanocladius (Plecopteracoluthus) sp. 2*, larva (A-E). A) Antenna; B) Pecten epipharyngis and premandibles; C) Mandible; D) Mentum; E) Posterior portion of the larva.

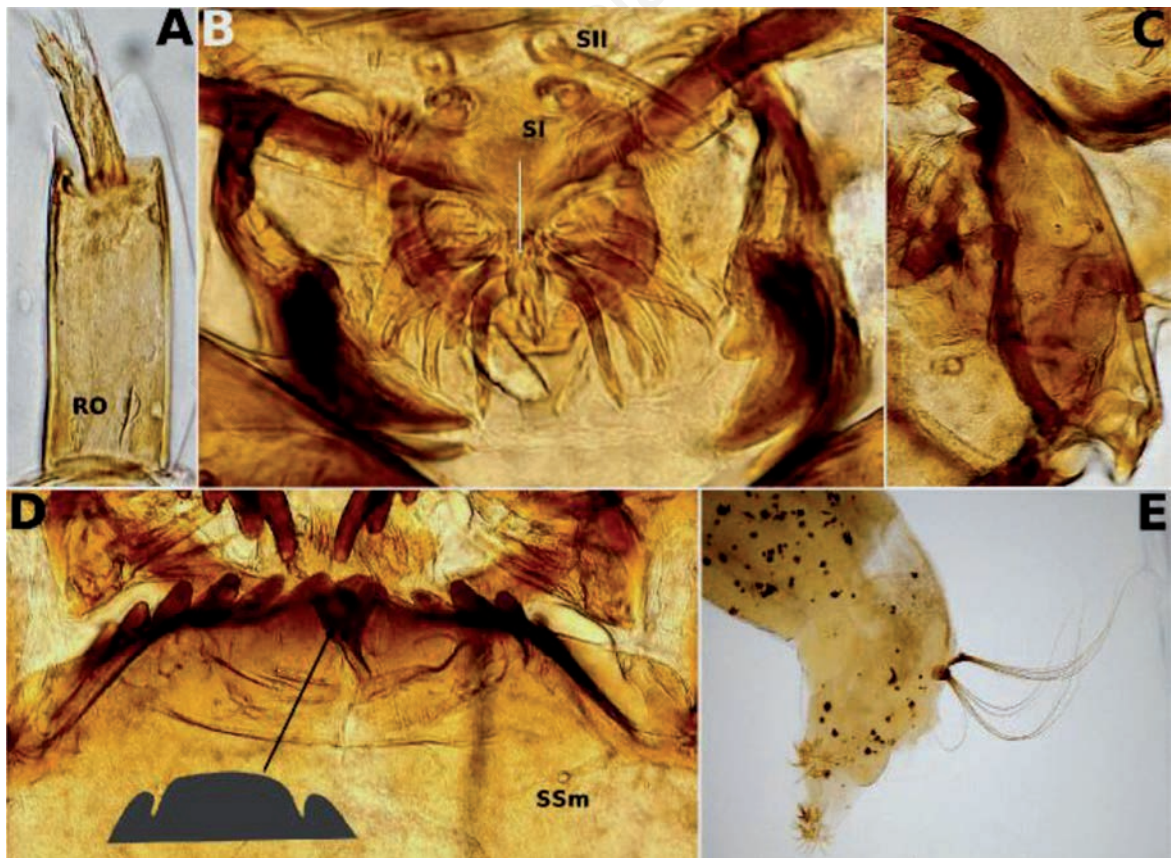


Figure 63. *Oliveridia tricornis* (Oliver), larva (A-E). A) Antenna; B) Labrum, Pecten epipharyngis (white arrow), premandibles; C) Mandible; D) Mentum; E) Posterior portion of the larva.

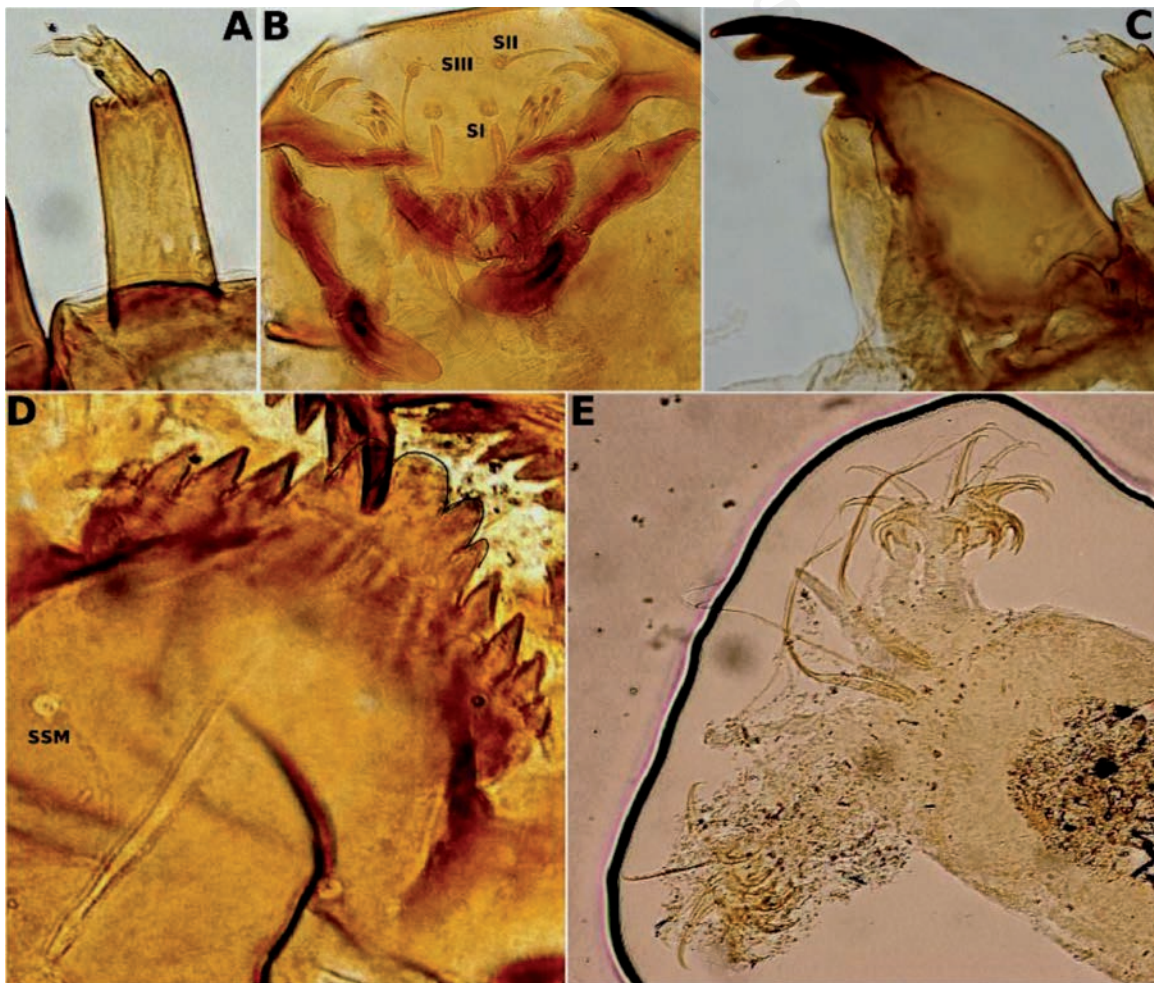


Figure 64. *Orthocladius (Euorthocladius) luteipes* Goetghebuer, larva (A-E). A) Antenna; B) Labrum, pecten epipharyngis, pre-mandibles; C) Mandible; D) Mentum; E) Posterior portion of the larva.

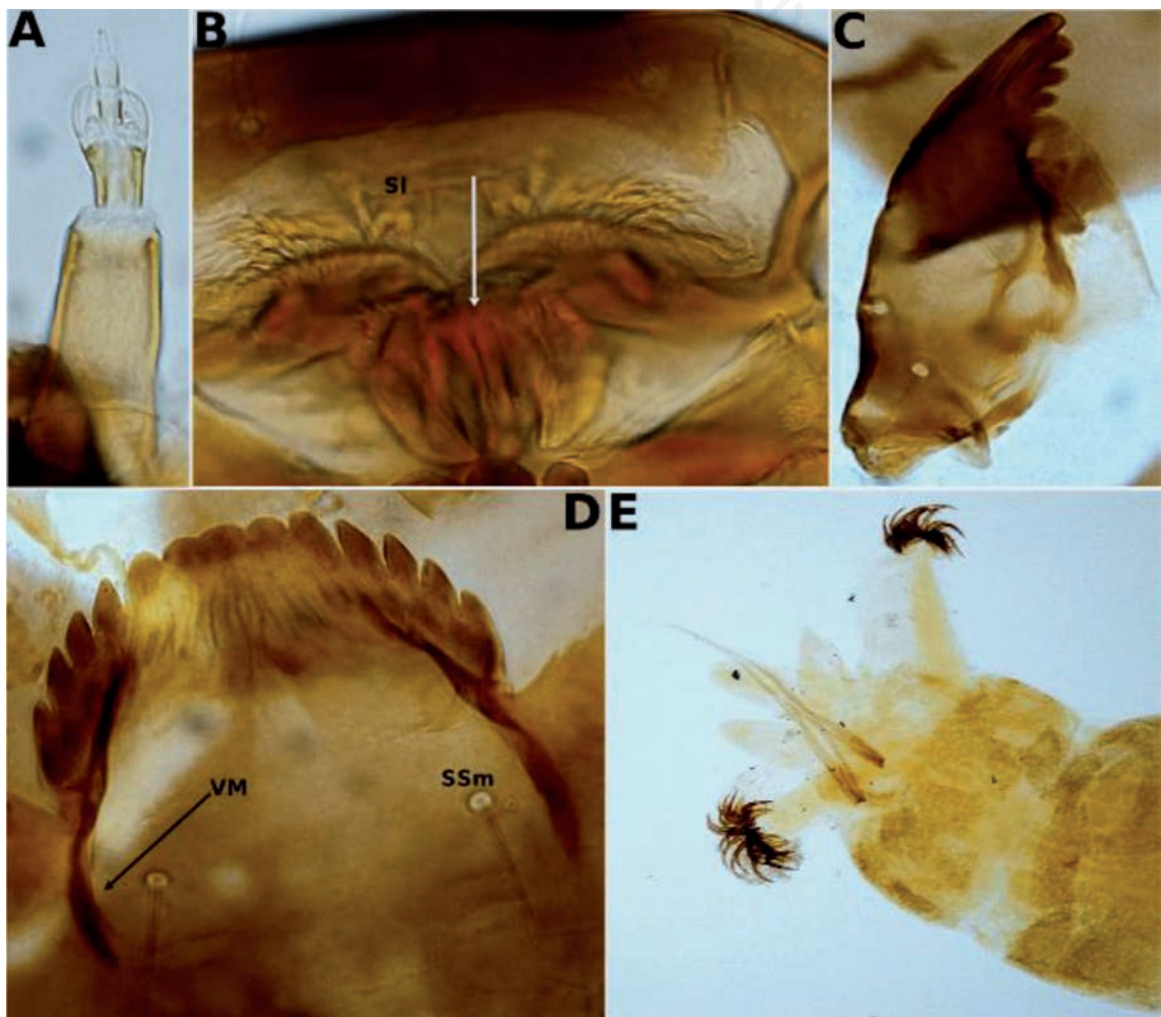


Figure 65. *Orthocladius (Euorthocladius) saxosus* (Tokunaga), larva (A-E). A) Antenna; B) Labrum, pecten epipharyngis (white arrow); C) Mandible; D) Mentum; E) Posterior portion of the larva.

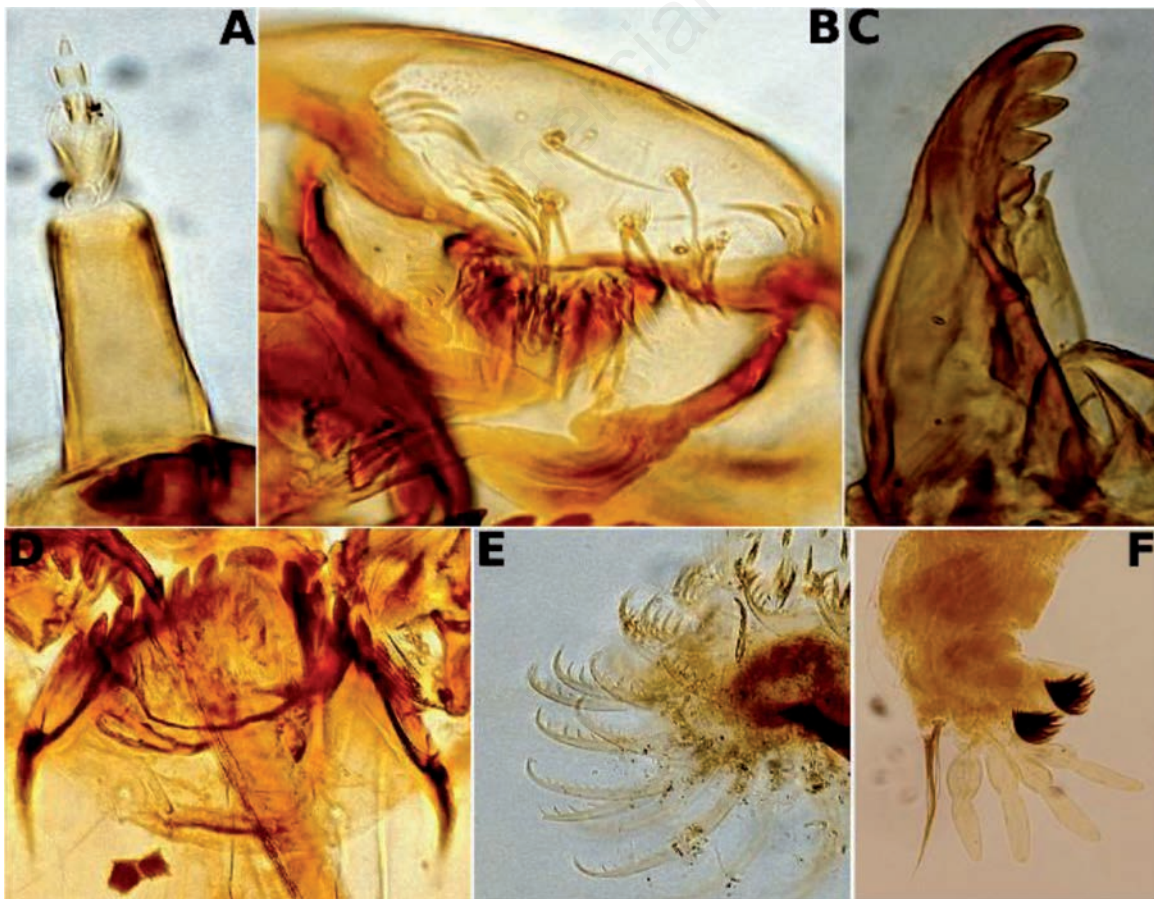


Figure 66. *Orthocladus (Euorthocladus) thienemanni* Kieffer, larva (A-F); A) Antenna; B) Labrum, pecten epipharyngis, premandibles; C) Mandible; D) Mentum; E) Claws of Anterior parapods; F) Posterior portion of the larva.

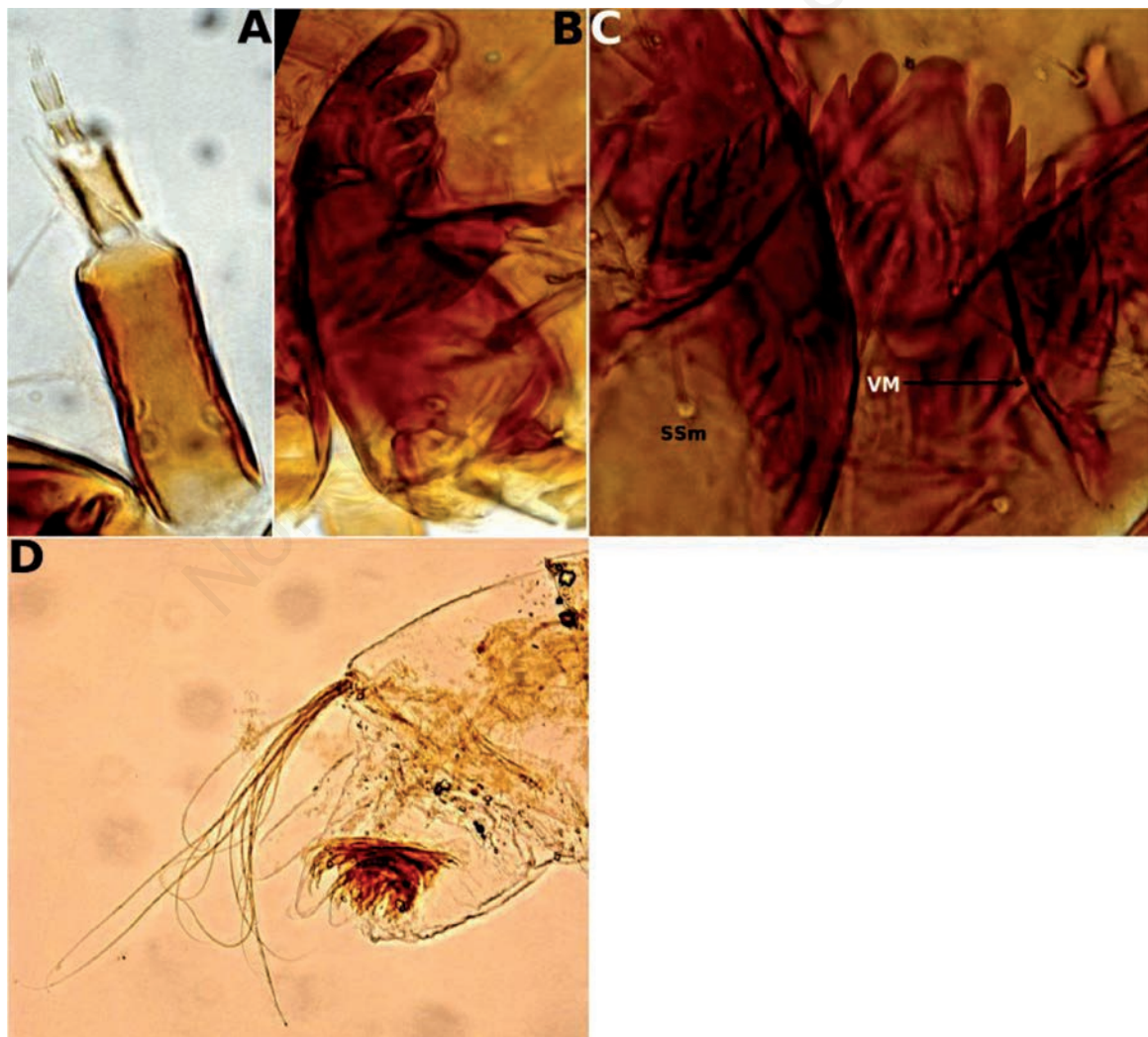


Figure 67. *Orthocladius (Mesorthocladius) frigidus* Kieffer, larva (A-D). A) Antenna; B) Mandible; C) Mentum; D) Posterior portion of the larva.

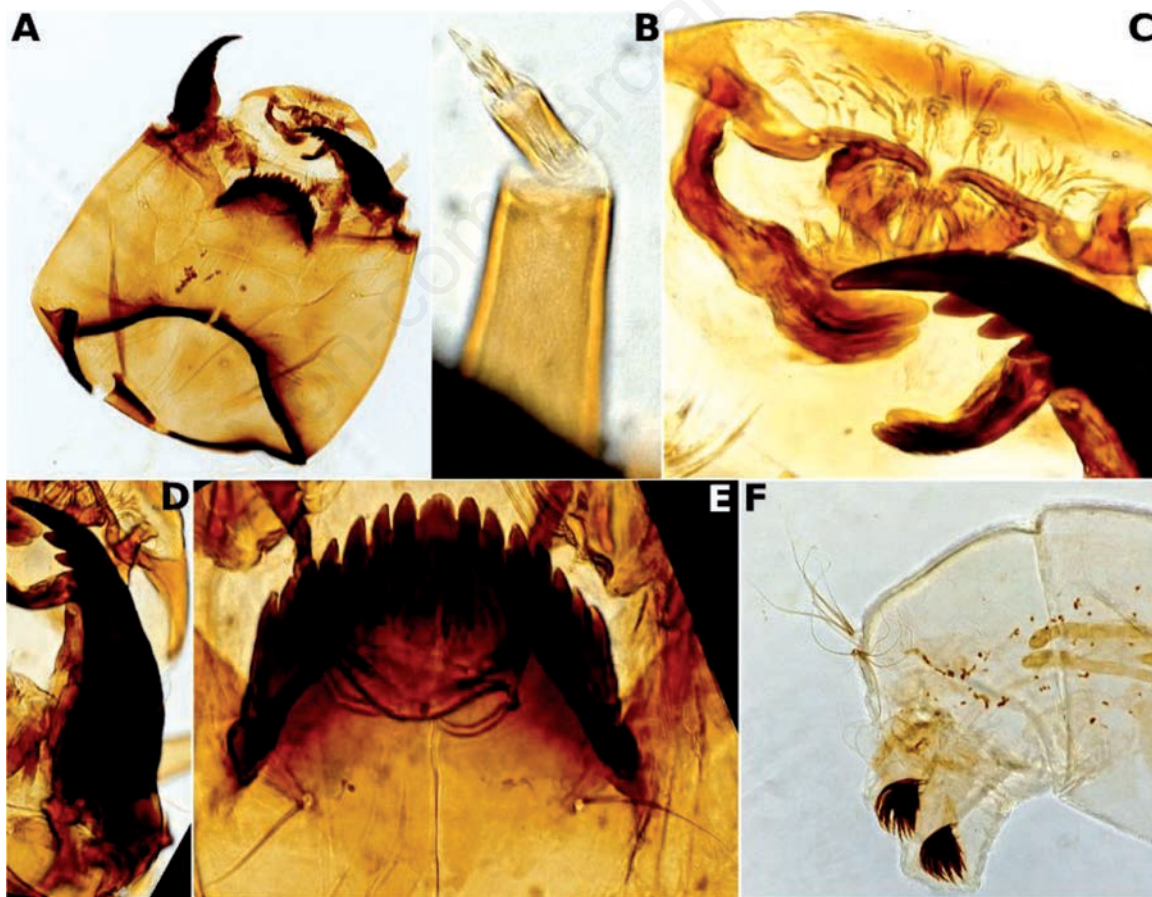


Figure 68. *Orthocladius (Mesorthocladius) rousellae* Sopenis, larva (A-F). A) Head; B) Antenna; C) Labrum, pecten epipharyngis, pre-mandibles; D) Mandible; E) Mentum; F) Posterior portion of the larva.

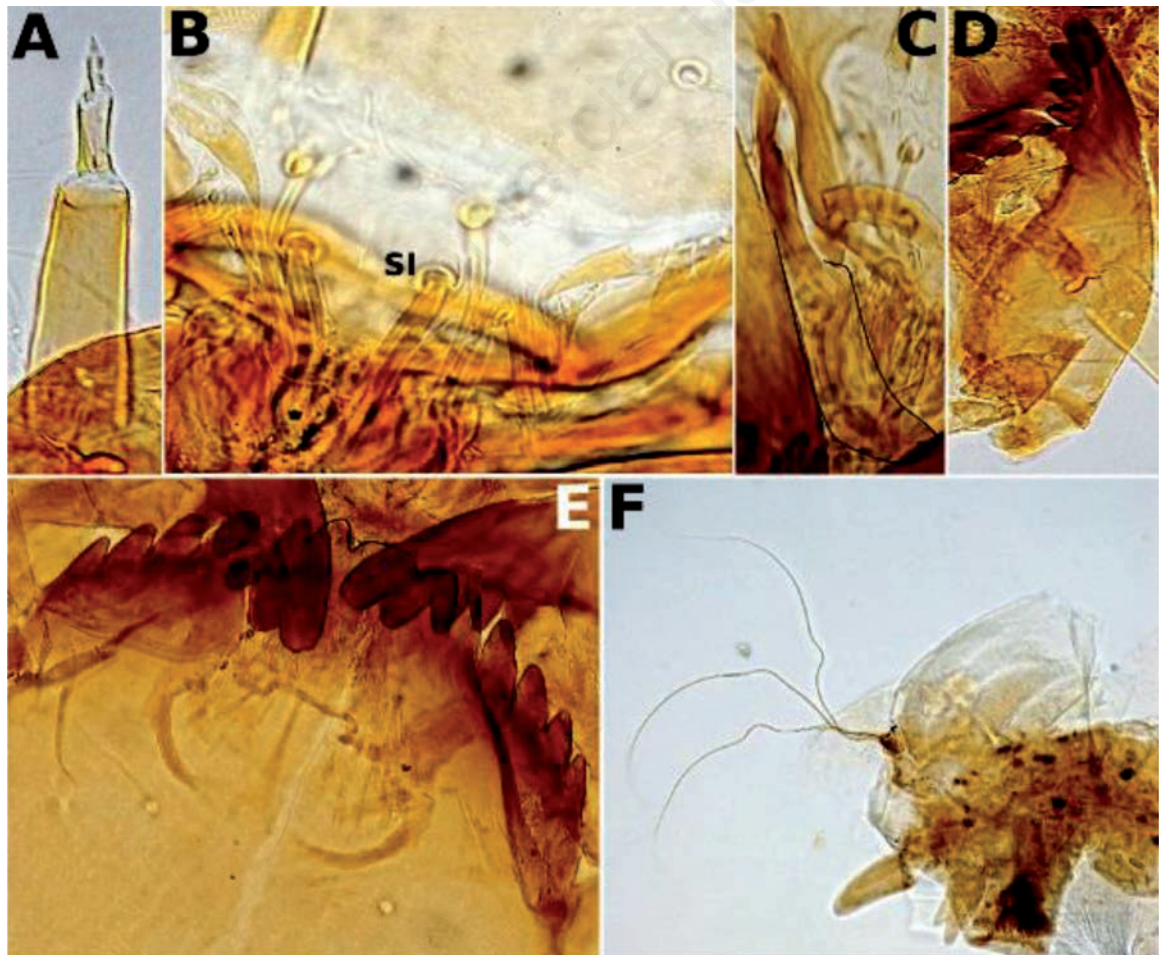


Figure 69. *Orthocladius (Orthocladius) charensis* Sopenis, larva (A-F). A) Antenna; B) Labrum; C) Premandible; D) Mandible; E) Mentum; F) Posterior portion of the larva.

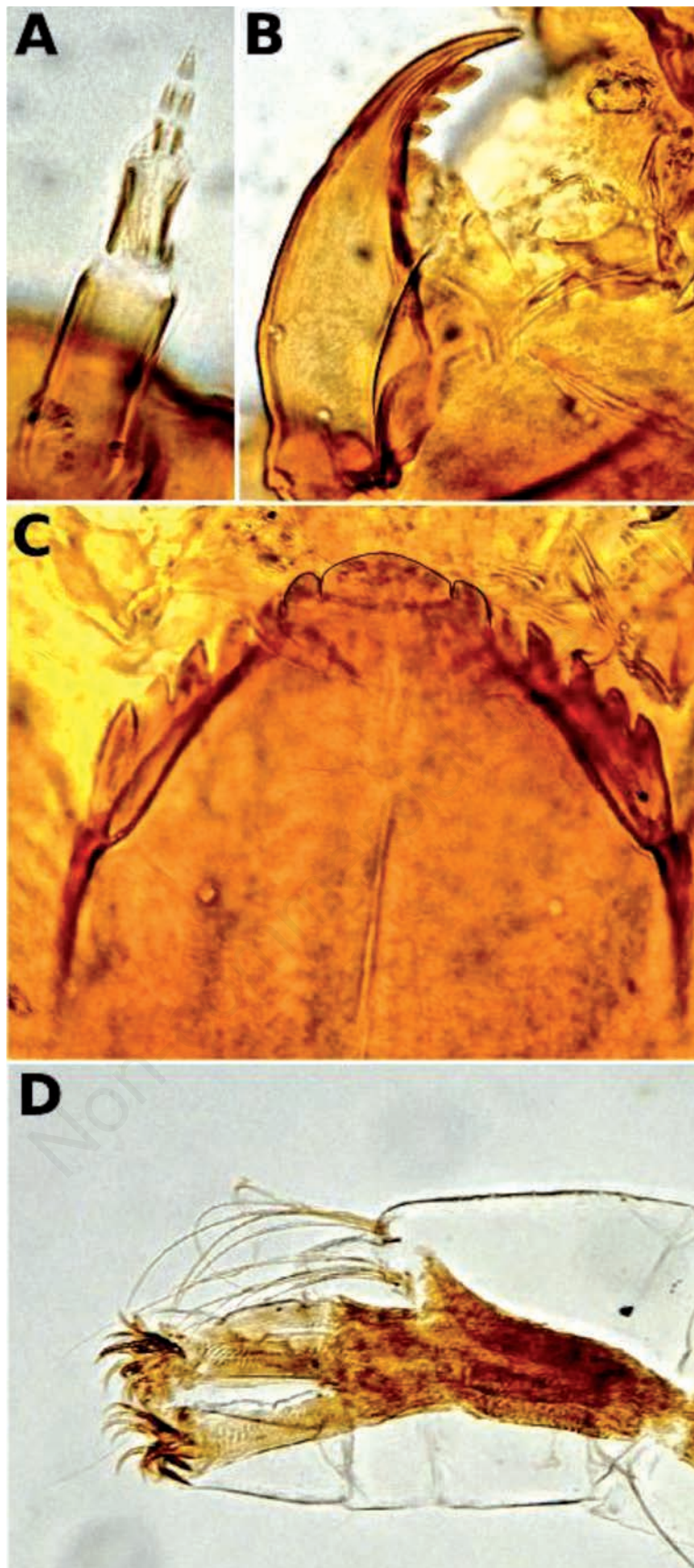


Figure 70. *Orthocladius (Orthocladius) cf. clarkei* Soponis, larva (A-D). A) Antenna; B) Mandible; C) Mentum; D) Posterior portion of the larva.

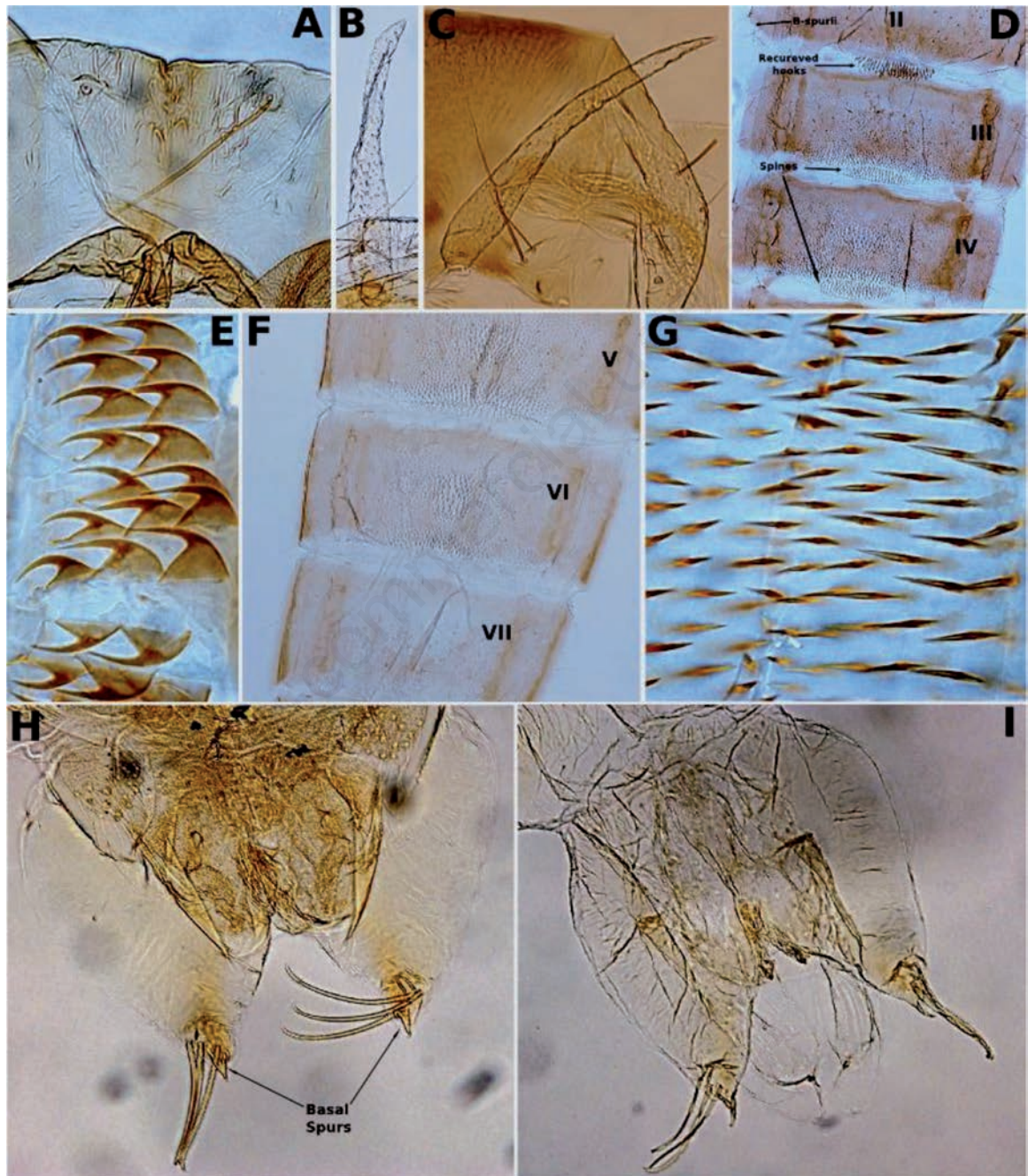


Figure 71. *Orthocladus (Orthocladus) obumbratus* Johannsen, pupa (A-I). A) Frontal apotome, frontal setae; B) Thoracic horn; C) Thoracic horn with precorneal setae; D) Tergites II-IV; E) Recurved hooks on segment II; F) Tergites V-VII; G) Larger spines on posterior of tergites III-V; H) Female genitalia sacs and anal lobes; I) Male genitalia sacs and anal lobes.

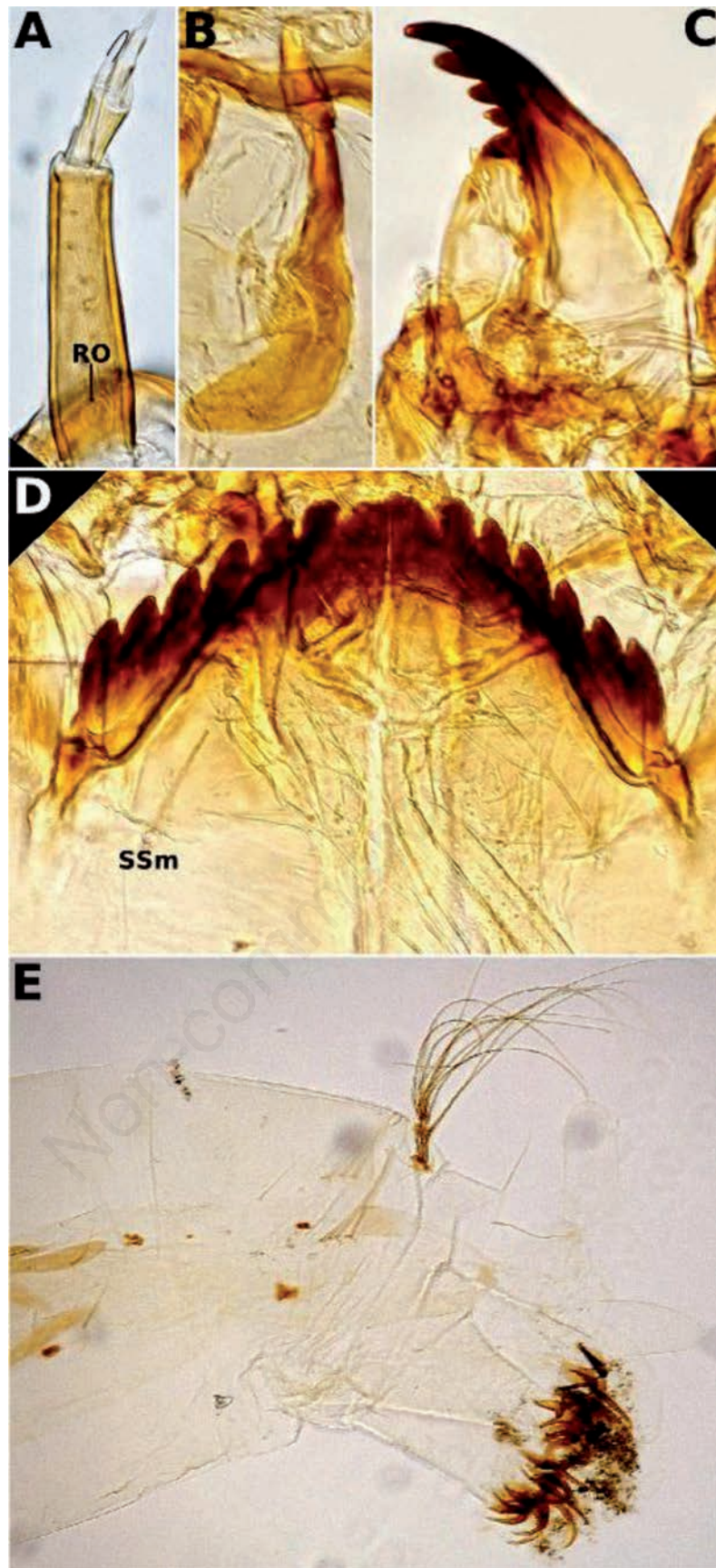


Figure 72. *Orthocladius (Orthocladius) obumbratus* Johannsen, larva (A-E). A) Antenna; B) Premandible; C) Mandible; D) Mentum; E) Posterior portion of the larva.

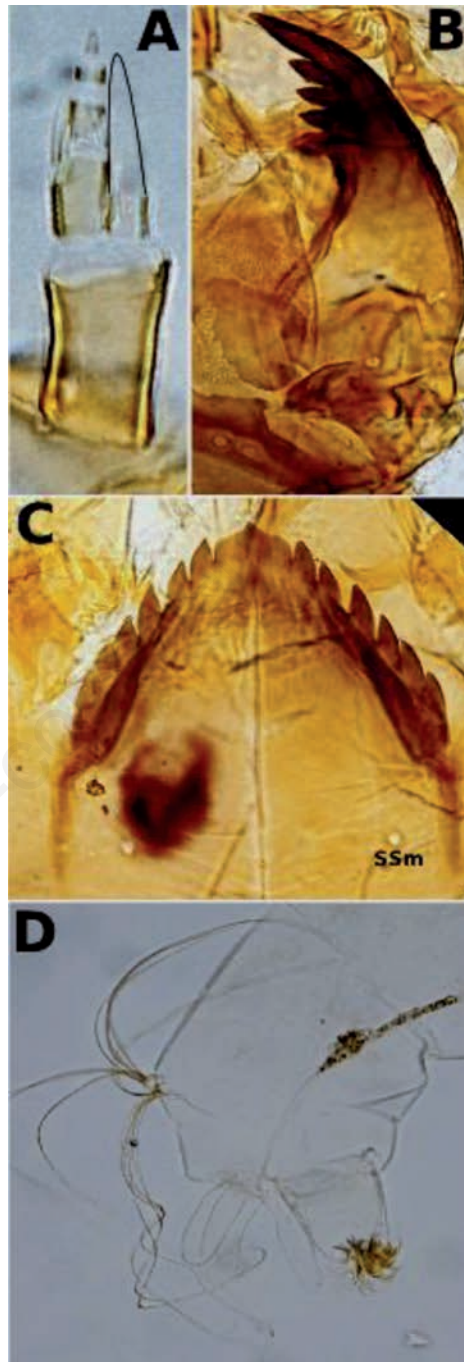


Figure 73. *Orthocladius (Symposiocladius) bolsatus* Goetghebuer, larva (A-D). A) Antenna; B) Mandible; C) Mentum; D) Posterior portion of the larva.

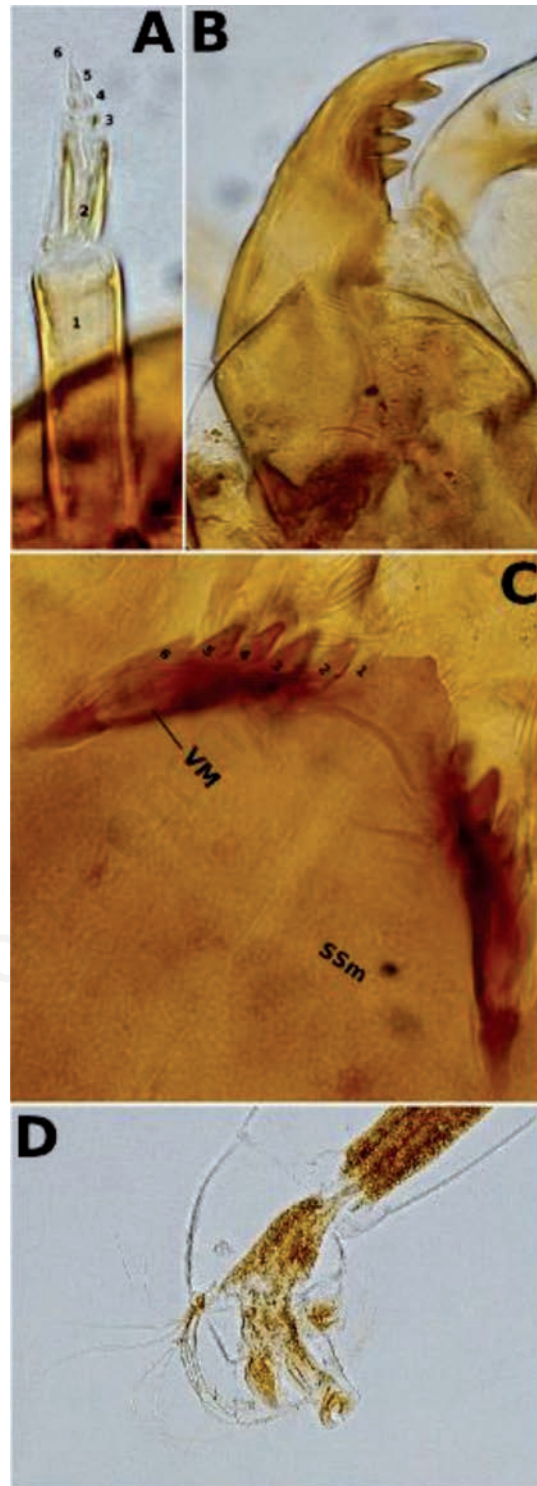


Figure 74. *Parakiefferiella cf. bathophila* (Kieffer), larva (A-D). A) Antenna; B) Mandible; C) Mentum; D) Posterior portion of the larva.

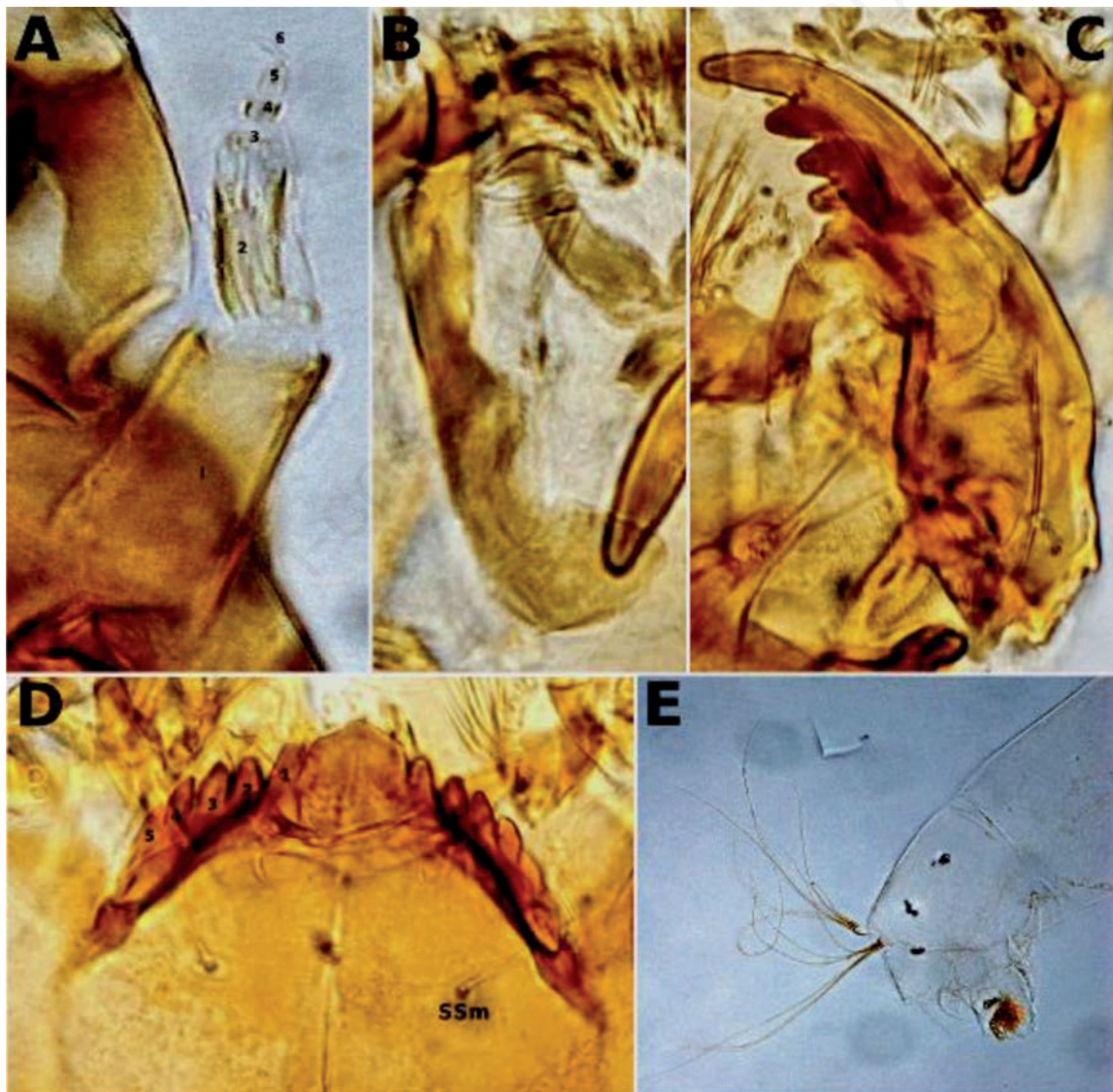


Figure 75. *Parakiefferiella cf. gracillima* (Kieffer), larva (A-E). A) Antenna; B) Premandible; C) Mandible; D) Mentum; E) Posterior portion of the larva.

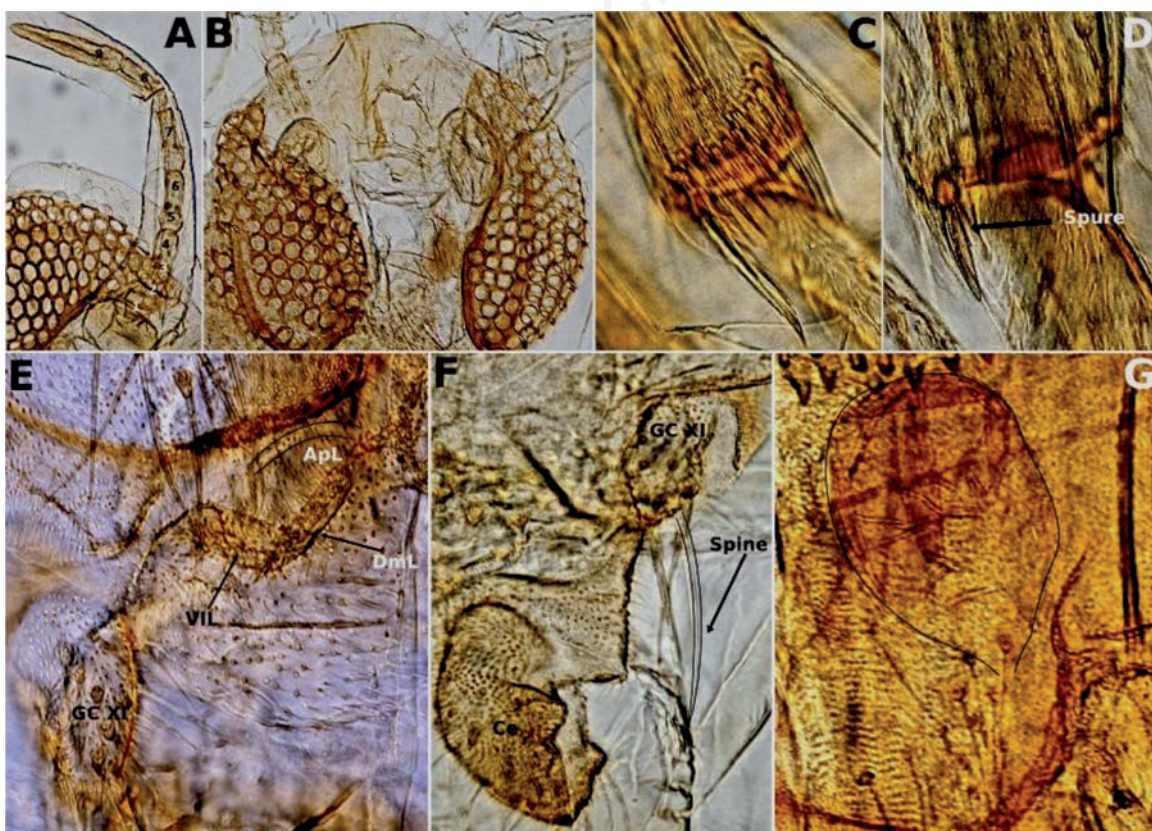


Figure 76. *Parametricnemus boreoalpinus* Gowin *et* Thienemann, pharate female (A-G). A) Antenna; B) Eye; C) Hind tibia comb and spur; D) Spur; E) Gonapophysis VII; F) Gonocoxite XI and its spine, Cercus; G) Seminal capsule.

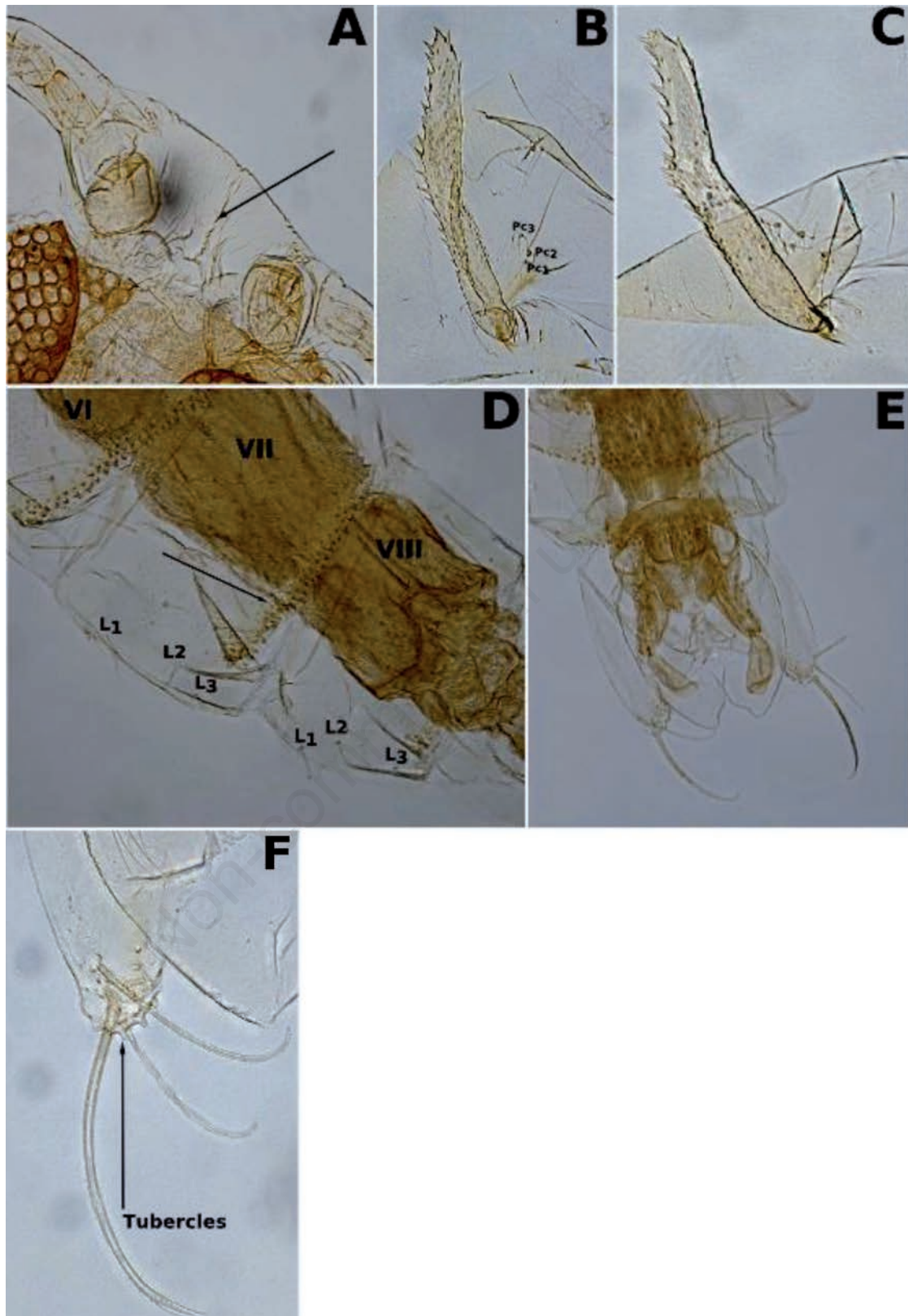


Figure 77. *Parametrioctenemus boreoalpinus* Gowin et Thienemann, pupa (A-F). A) Frontal apotome; B) Thoracic horn and precorneal setae; C) Thoracic horn variation; D) Segments VI-VIII, lateral setae; E) Male genitalia sacs and anal lobe; F) Anal lobes tubercles.

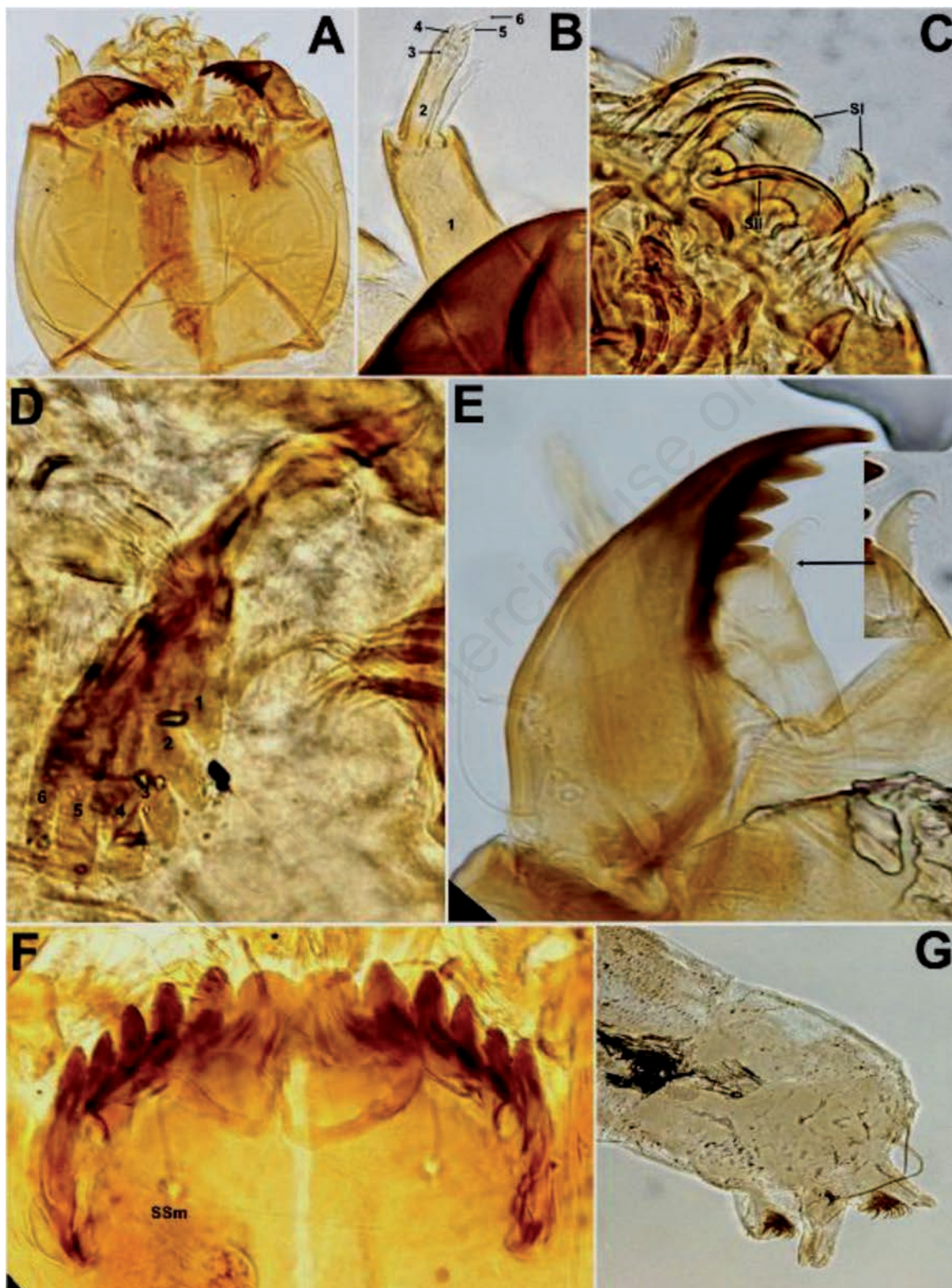


Figure 78. *Parametricnemus boreoalpinus* Gowin *et* Thienemann, larva (A-G). A) Head; B) Antenna; C) Labrum; D) Premandible; E) Mandible, arrow indicates the SSD; F) Mentum; G) Posterior portion of the larva.

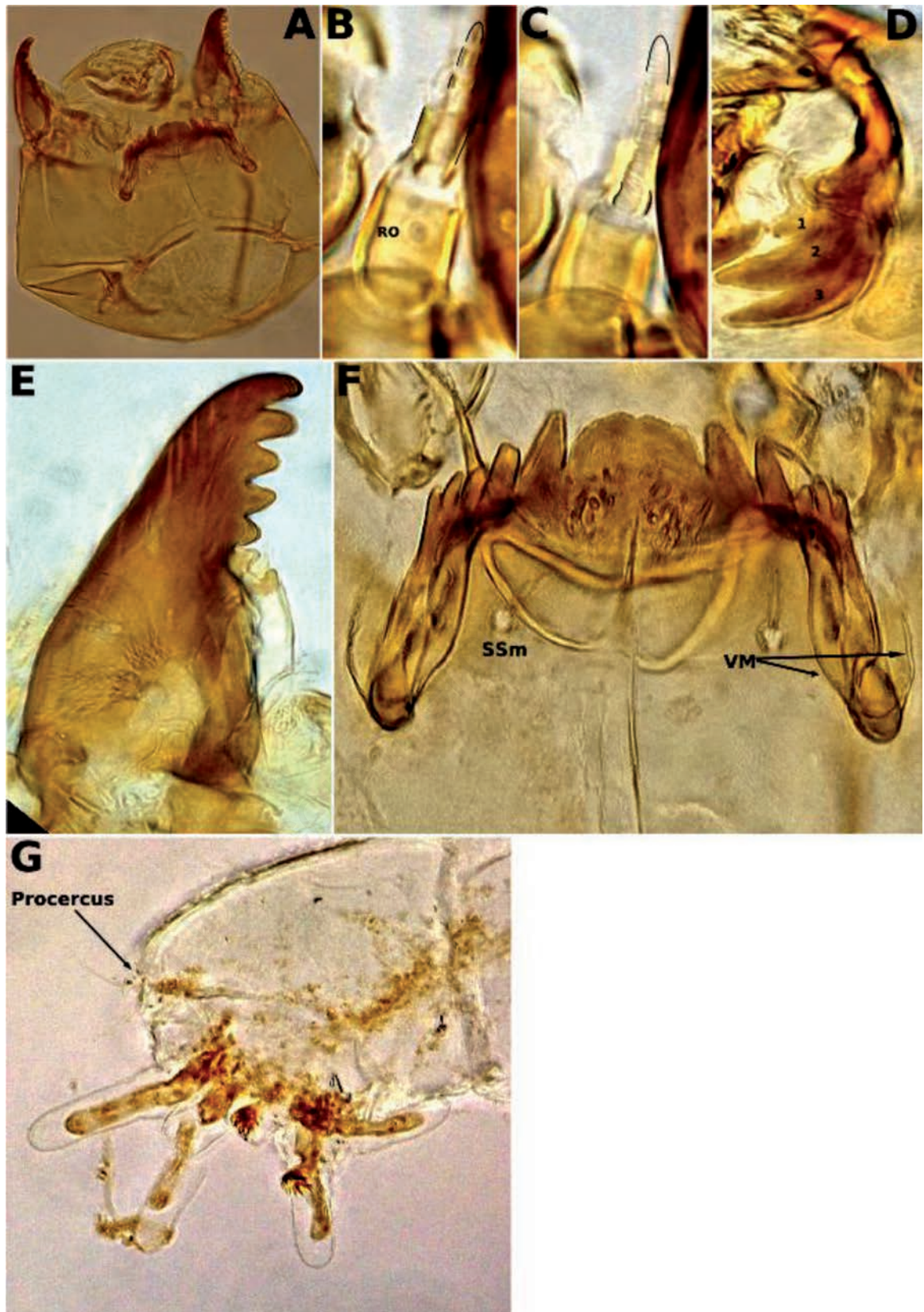


Figure 79. *Paraphaenocladus exagitans exagitans* (Johannsen), larva (A-G). A) Head; B) Antenna; C) Antenna blade; D) Premandible; E) Mandible; F) Mentum; G) Posterior portion of the larva.

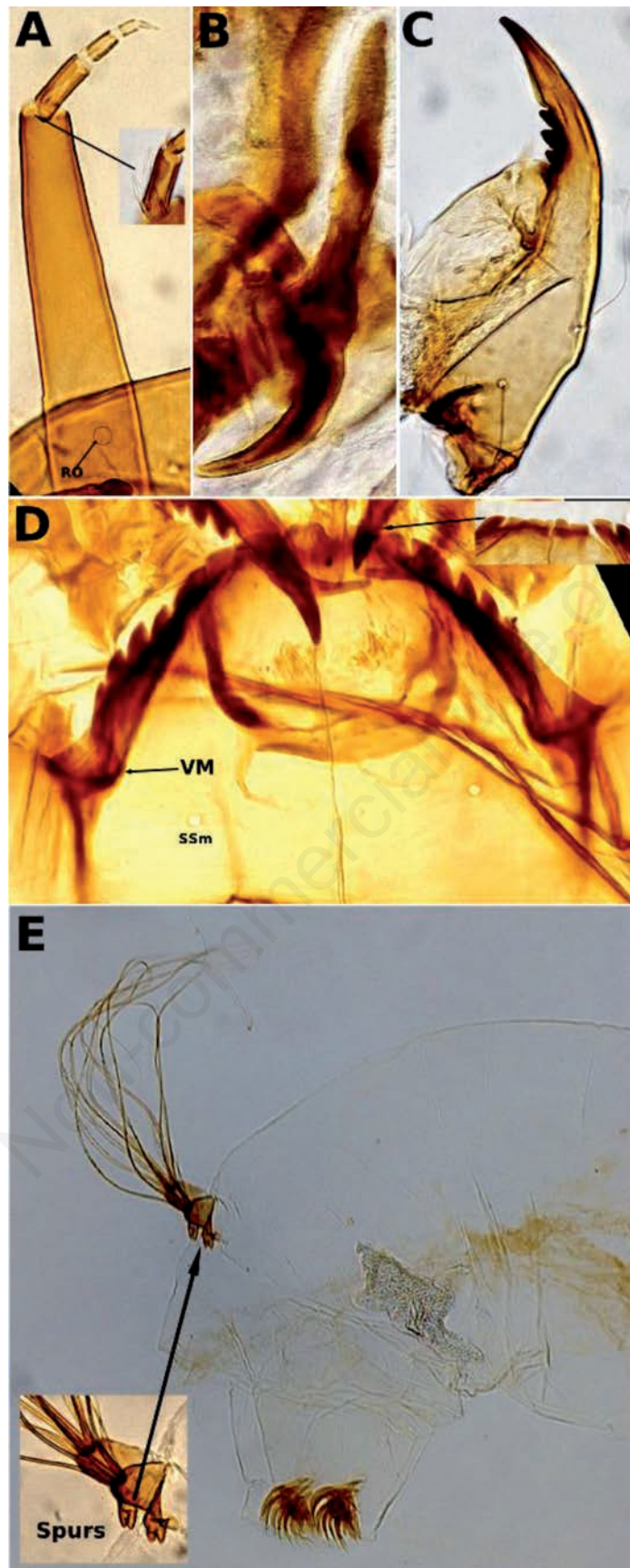


Figure 80. *Psectrocladius* (*Allopsectrocladius*) *obvius* (Walker), larva (A-E). A) Antenna; B) Premandible; C) Mandible; D) Mentum; E) Posterior portion of the larva.

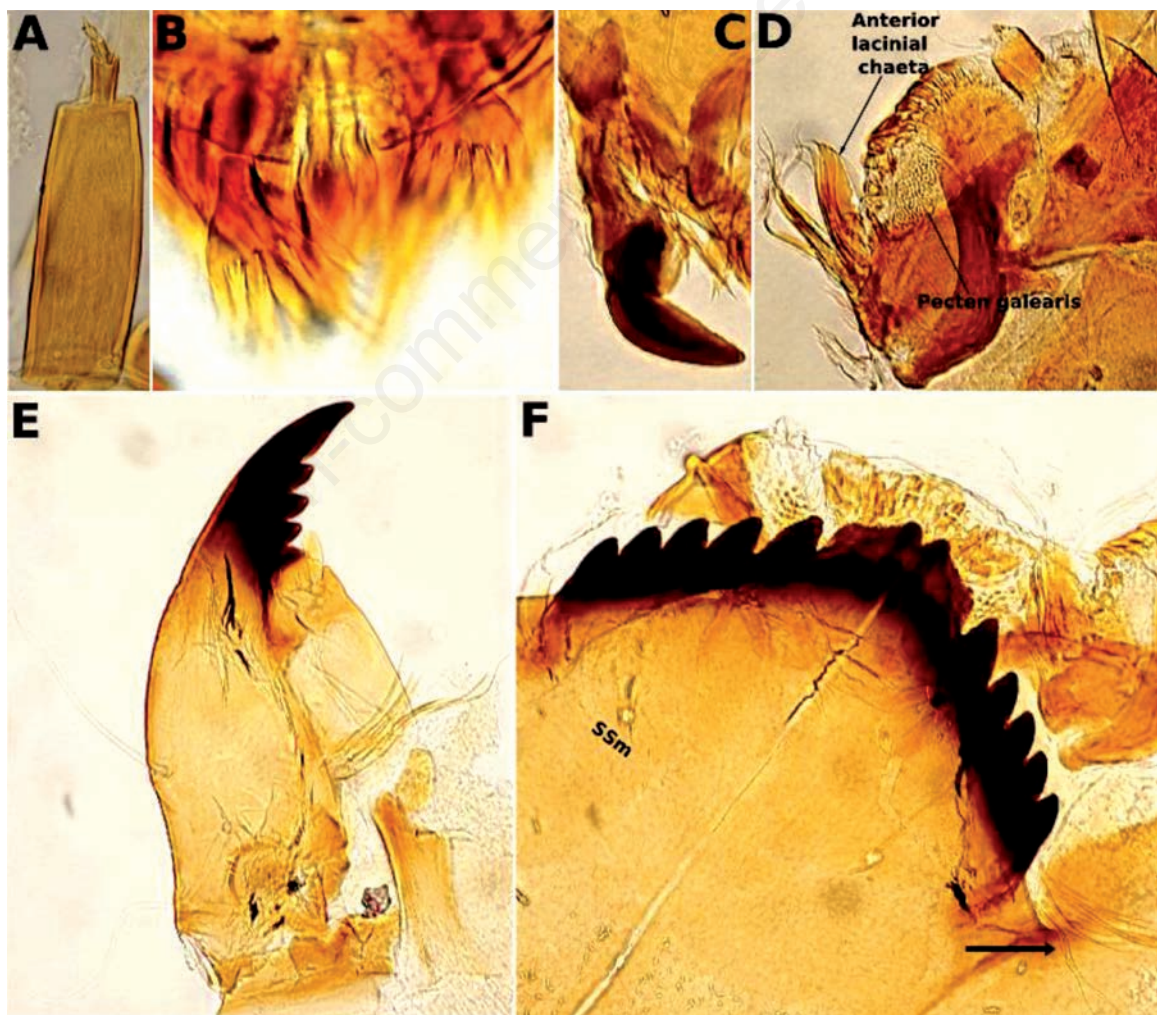


Figure 81. *Psectrocladius* (*Psectrocladius*) *sordidellus* group, larva (A-F). A) Antenna; B) SI of labrum; C) Premandible; D) Maxilla; E) Mandible; F) Mentum.

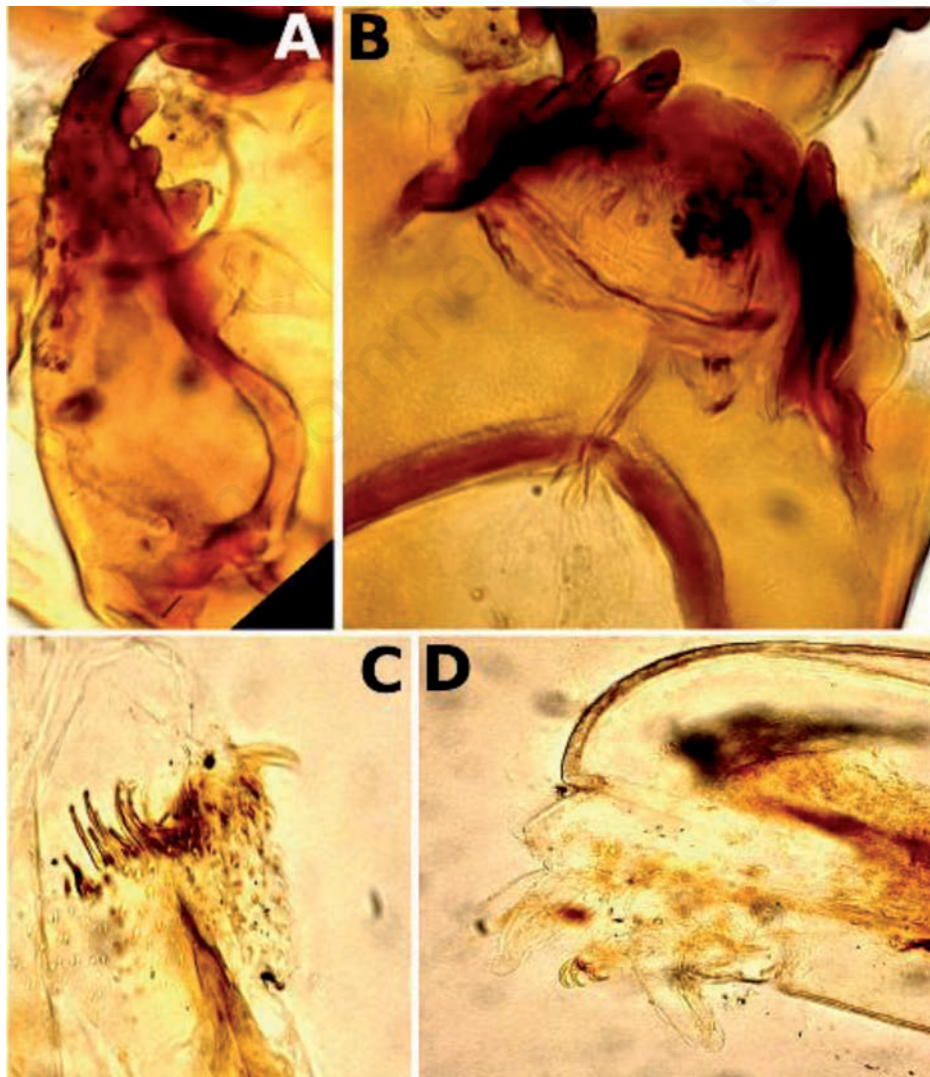


Figure 82. *Pseudosmittia* sp., larva (A-D). A) Mandible; B) Mentum; C) Claws of anterior parapods; D) Posterior portion of the larva.

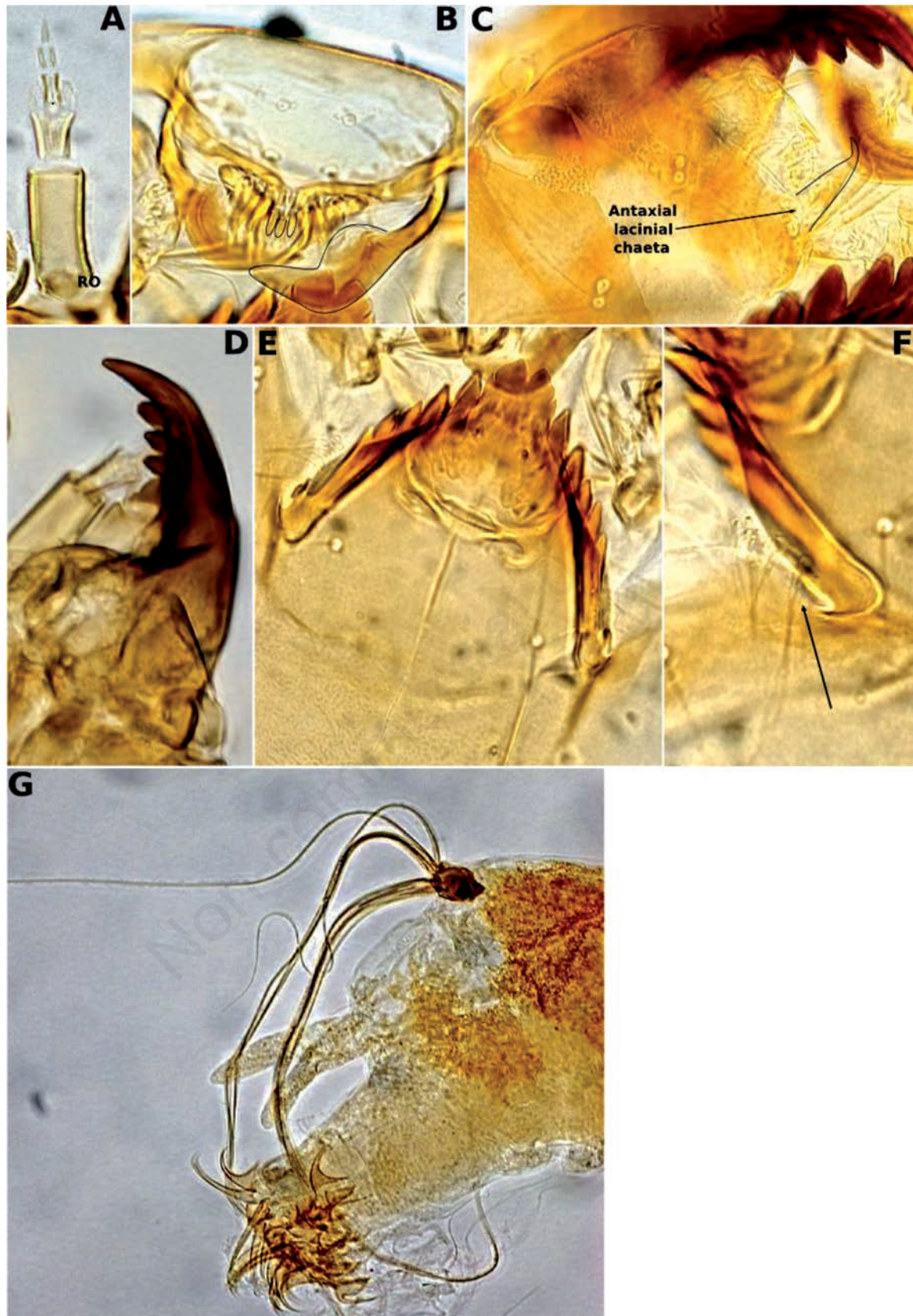


Figure 83. *Rheocricotopus (Psilocricotopus) chalybeatus* group, larva (A-G); A) Antenna; B) Labrum, pecten epipharyngis and premandibles; C) Maxilla; D) Mandible; E) Mentum; F) Ventromental plate, arrow indicates the cardinal beards; G) Posterior portion of the larva.

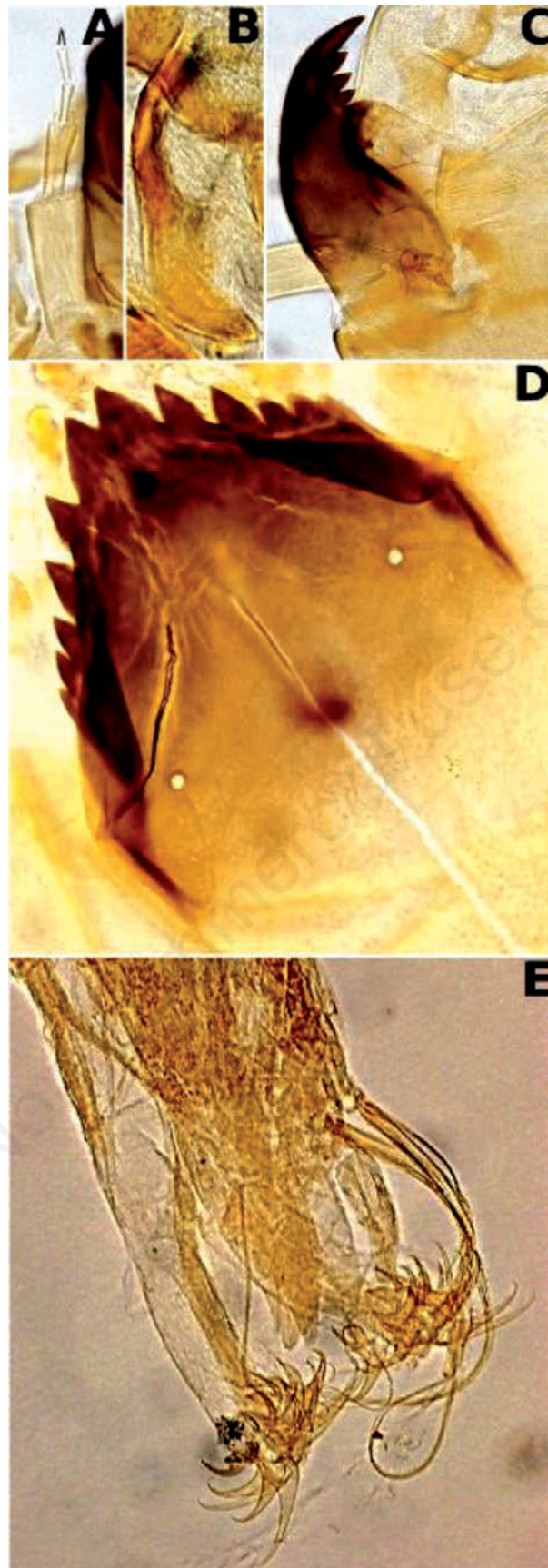


Figure 84. *Rheocricotopus (Rheocricotopus) eminellobus* Sæther, larva (A-E). A) Antenna; B) Premandible; C) Mandible; D) Mandible; E) Posterior portion of the larva.

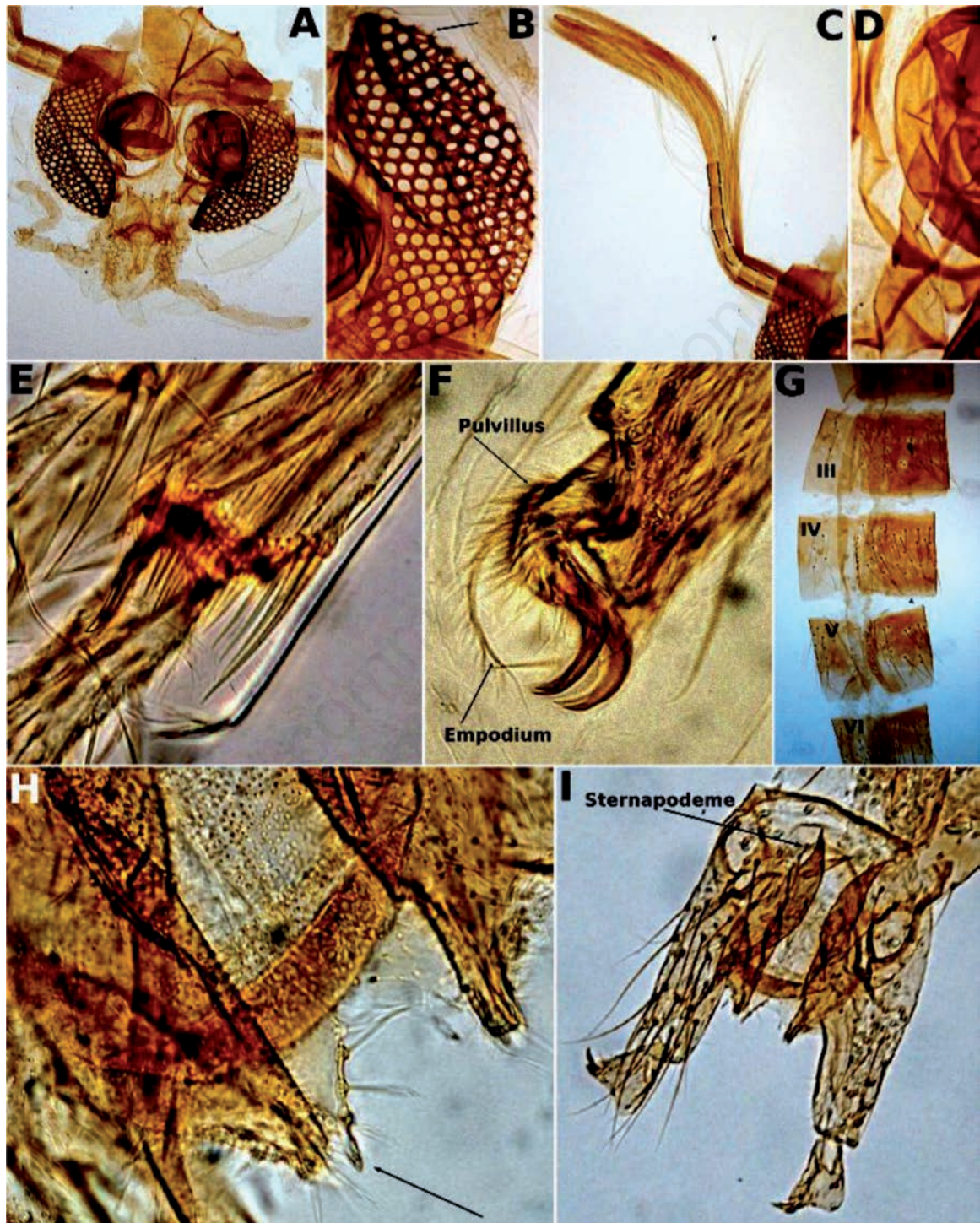


Figure 85. *Rheocricotopus (Rheocricotopus) pauciseta* Sæther, pharate male (A-I). A) Head, vertex; B) Eye; C) Antenna; D) Tentorium; E) Hind tibia spur and comb; F) Empodium, pulvillus and claws; G) Abdominal segments II-VI; H) Anal point (arrow); I) Male's tergite IX and genitalia.

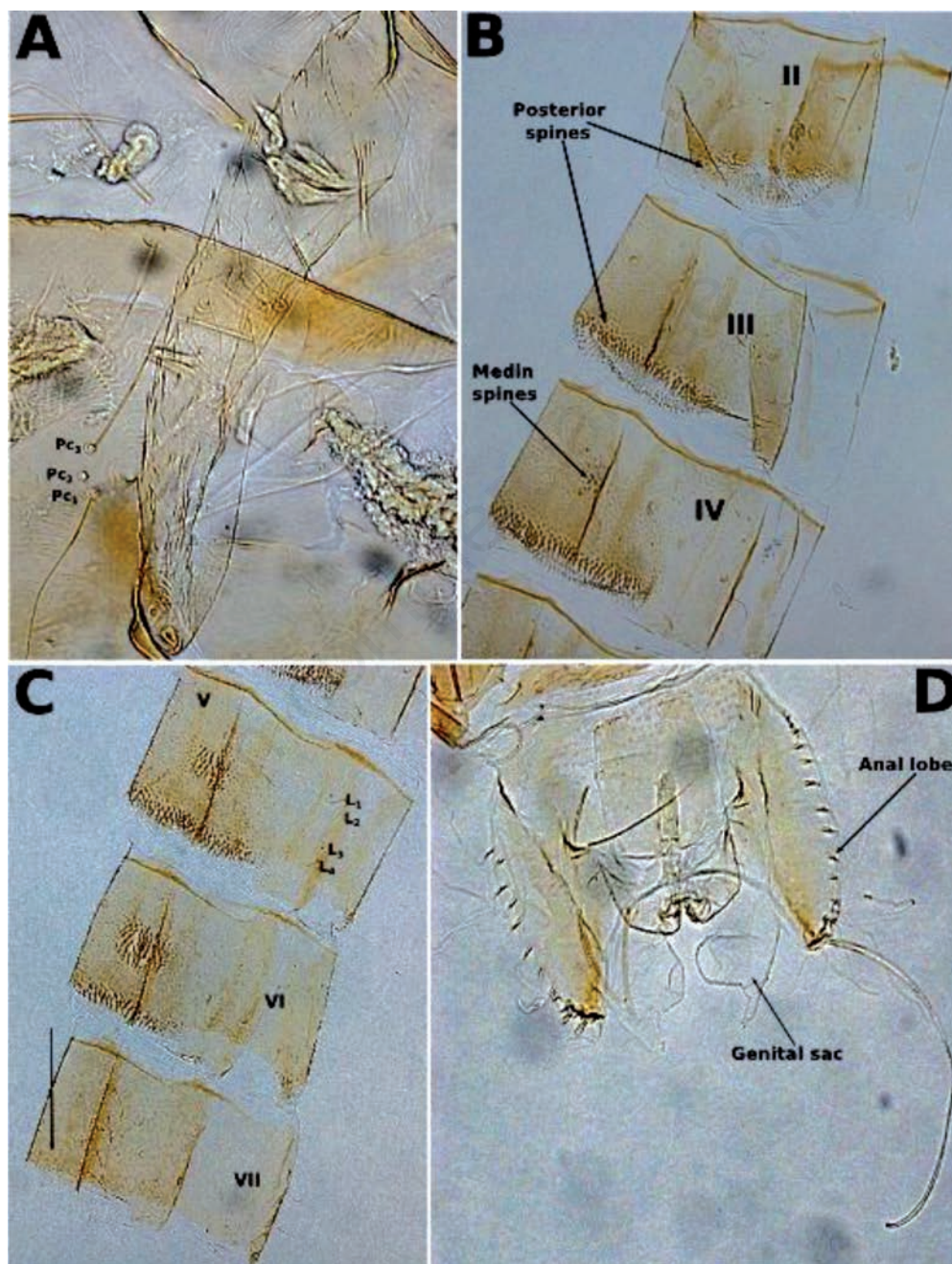


Figure 86. *Rheocricotopus (Rheocricotopus) pauciseta* Sæther, pupa (A-D). A) Thoracic horn and precorneal setae; B) Segments II-IV; C) Segments V-VII, arrow indicates the faint posterior spines; D) Anal lobes and genitalia sacs.

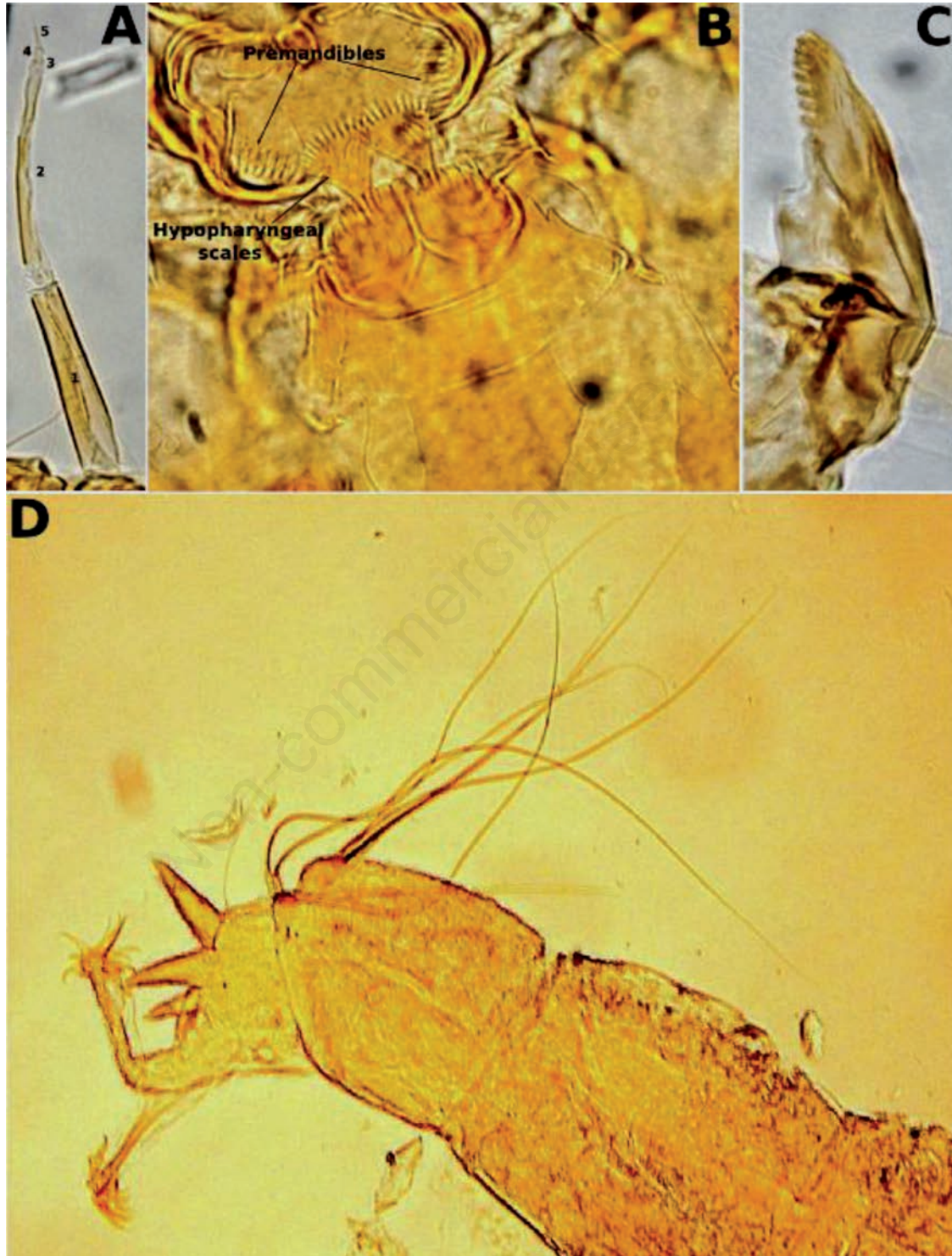


Figure 87. *Rheosmittia* sp. A, larva (A-D). A) Antenna; B) Premandibles, hypopharyngeal scales and mentum; C) Mandible; D) Posterior portion of the larva.

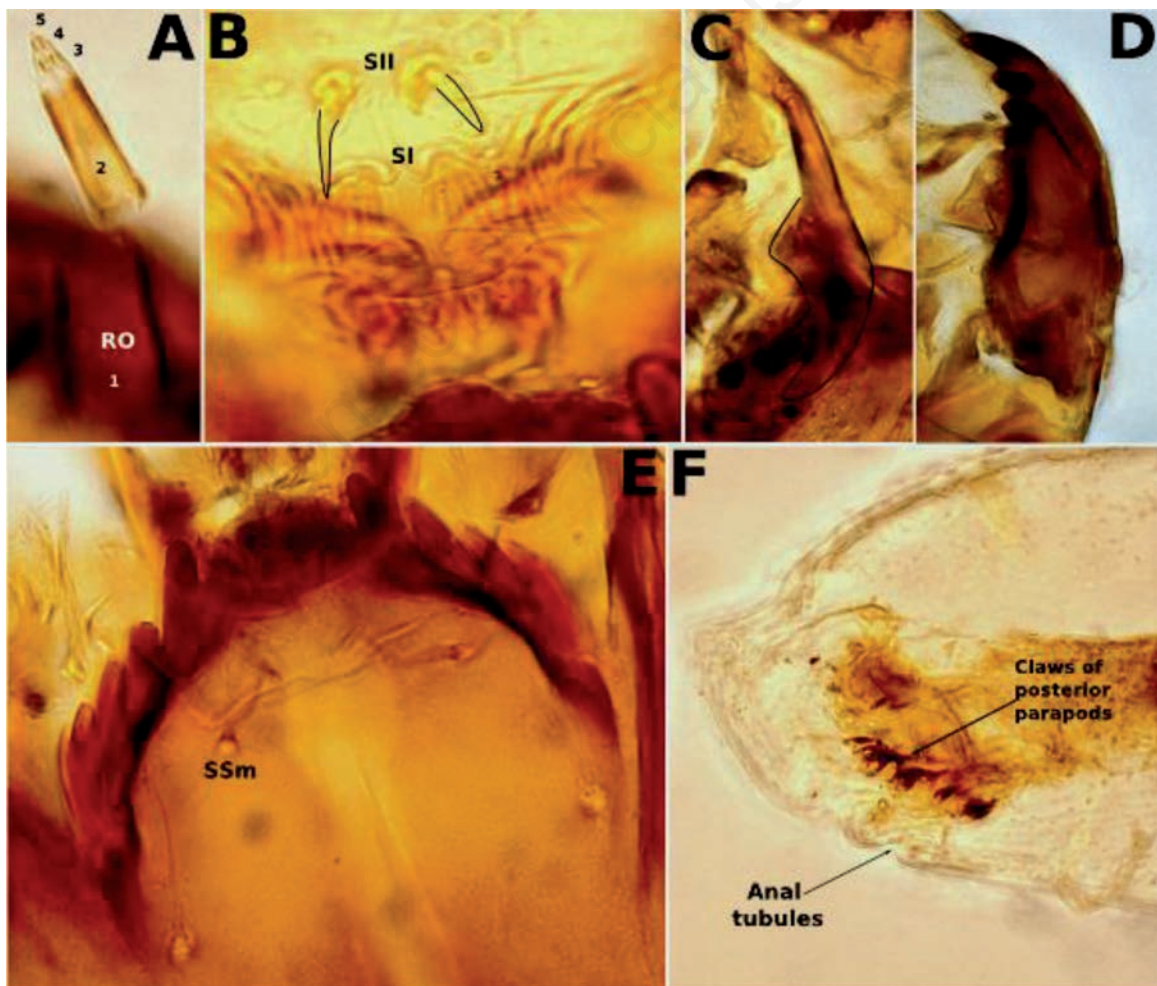


Figure 88. *Smittia* sp., larva (A-F). A) Antenna; B) Labrum; C) Premandible; D) Mandible; E) Mentum; F) Posterior portion of the larva.

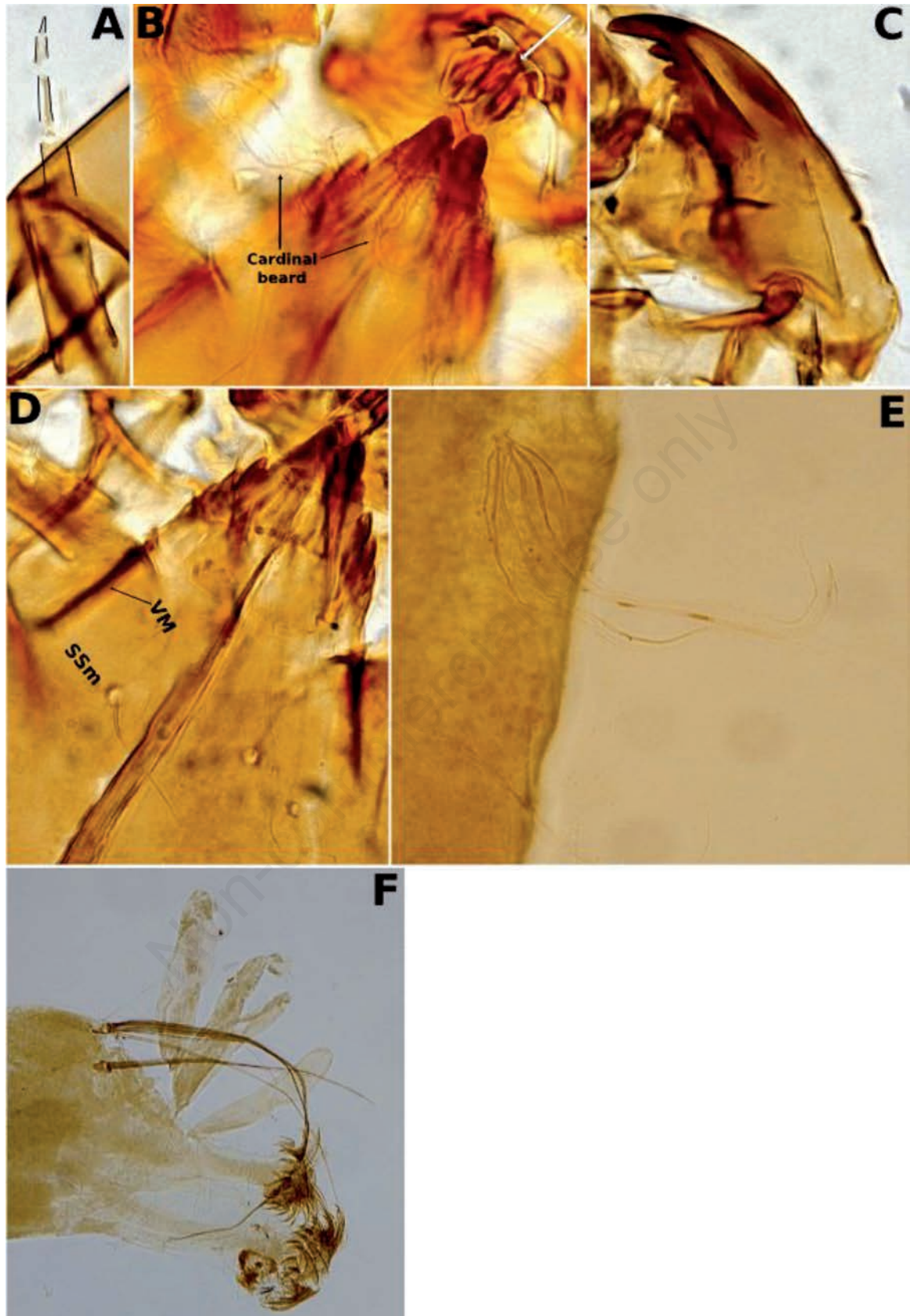


Figure 89. *Synorthocladus semivirens* (Kieffer), larva (A-F). A) Antenna; B) Pecten epipharyngis (white arrow), mentum median teeth and cardinal beard of VmP; C) Mandible; D) Mentum; E) Abdominal setae; F) Posterior portion of the larva.

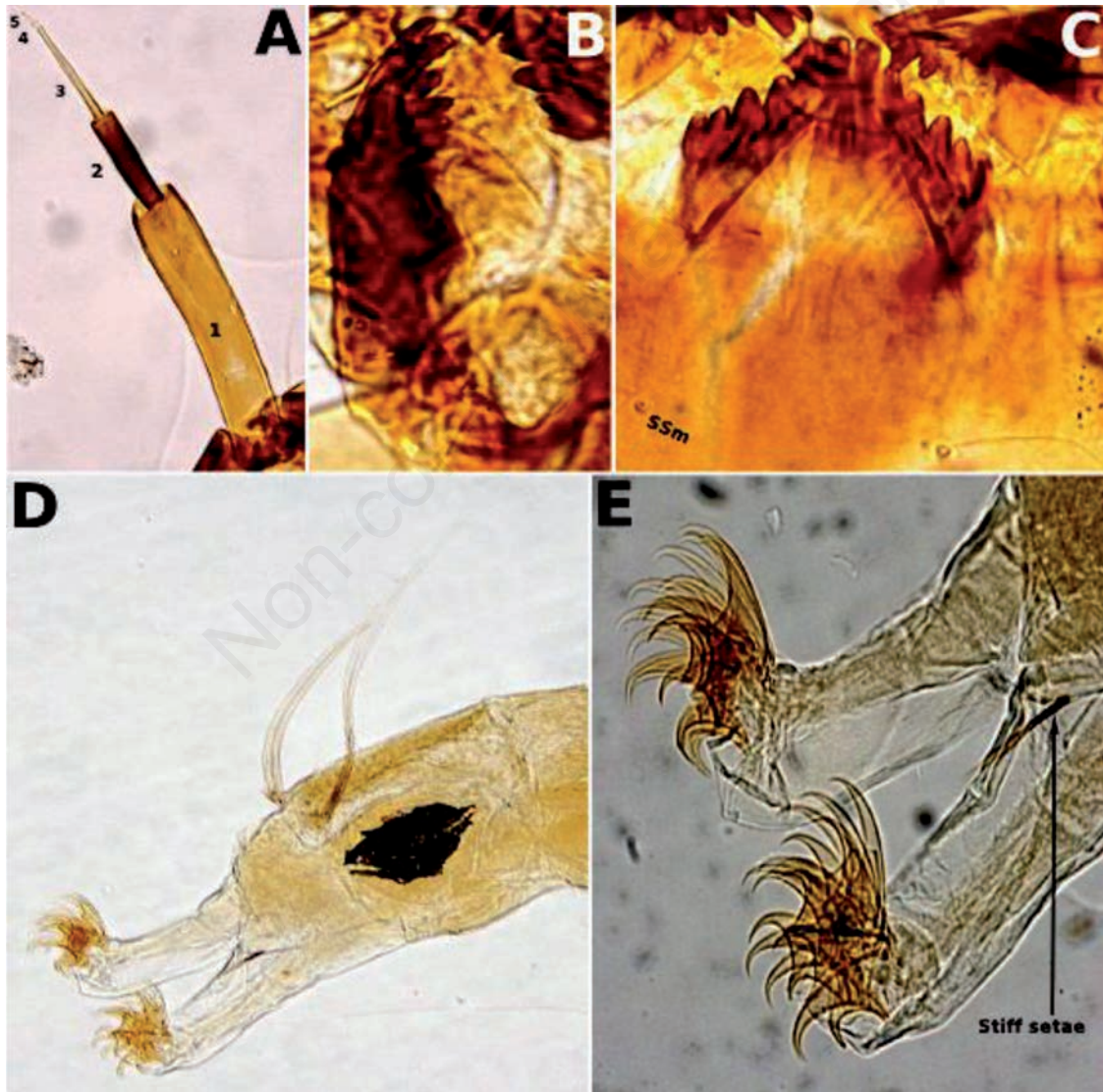


Figure 90. *Thienemanniella boltoni* Hestenes et Sæther, larva (A-E). A) Antenna; B) Mandible; C) Mentum; D) Posterior portion of the larva; E) Posterior parapods stiff setae and claws of posterior parapods.

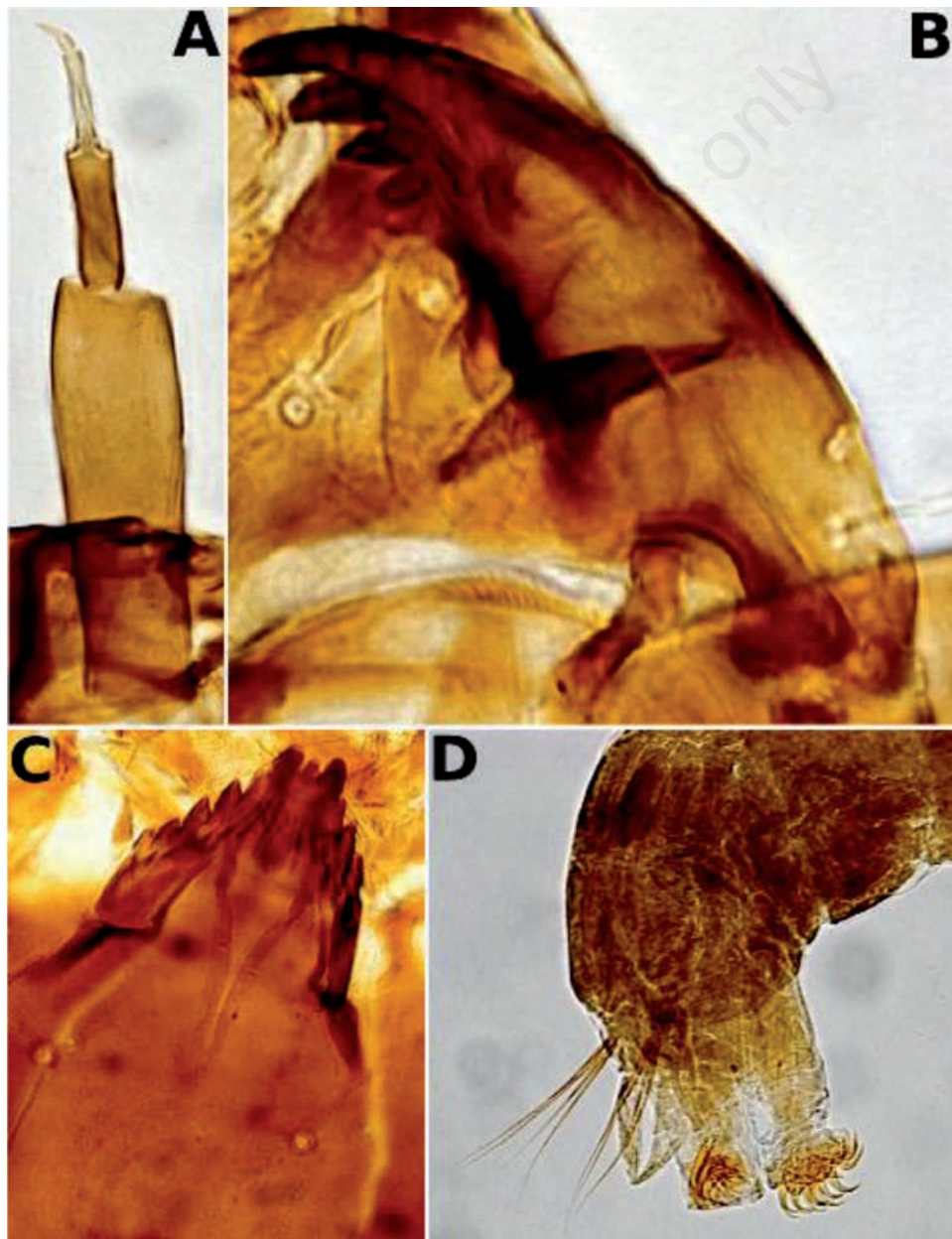


Figure 91. *Thienemanniella caspersi* Sæther, larva (A-D). A) Antenna; B) Mandible; C) Mentum; D) Posterior portion of the larva.

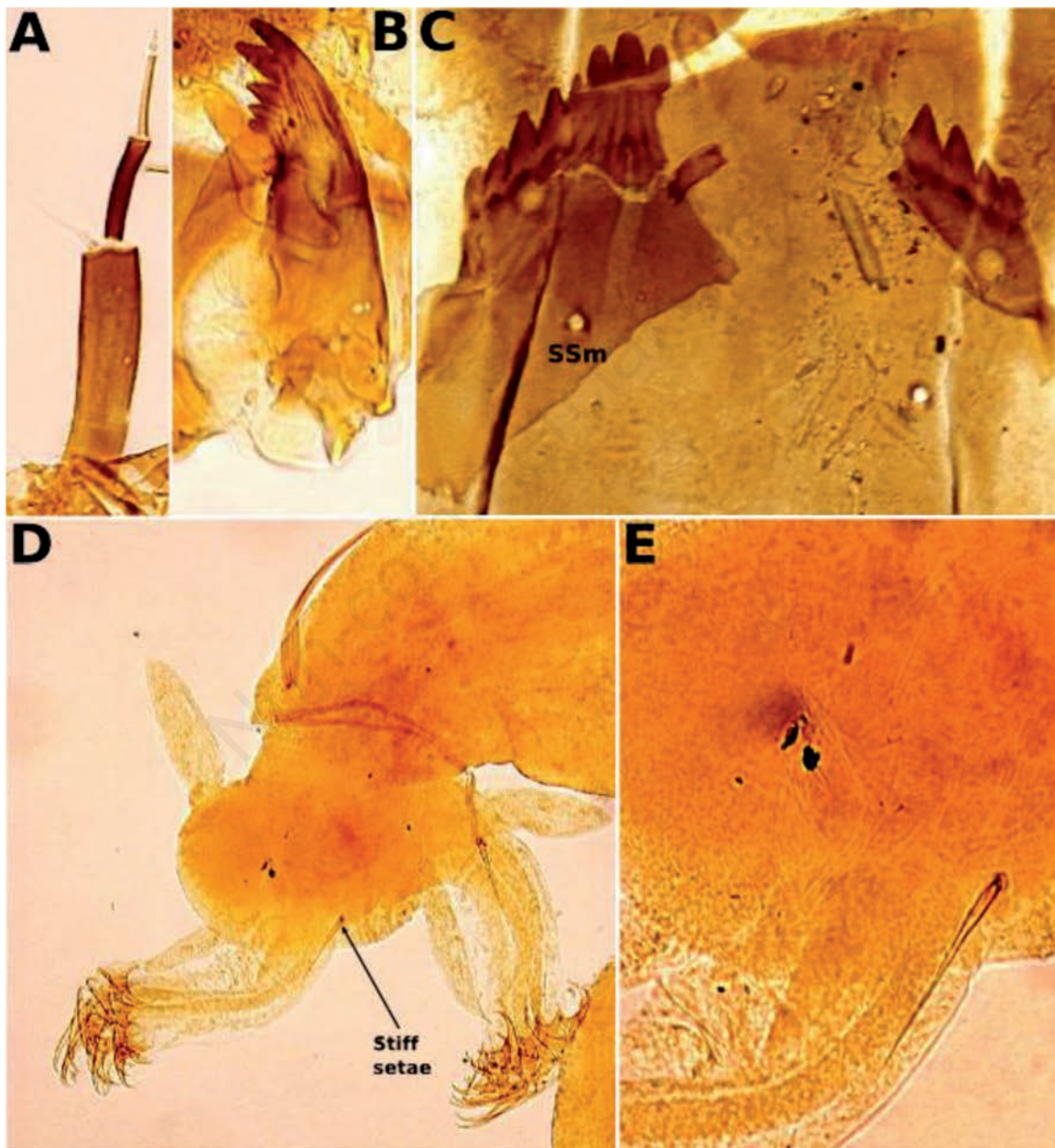


Figure 92. *Thienemanniella* sp. A, larva (A-E). A) Antenna; B) Mandible; C) Mentum; D) Posterior portion of the larva; E) Posterior parapod stiff setae.

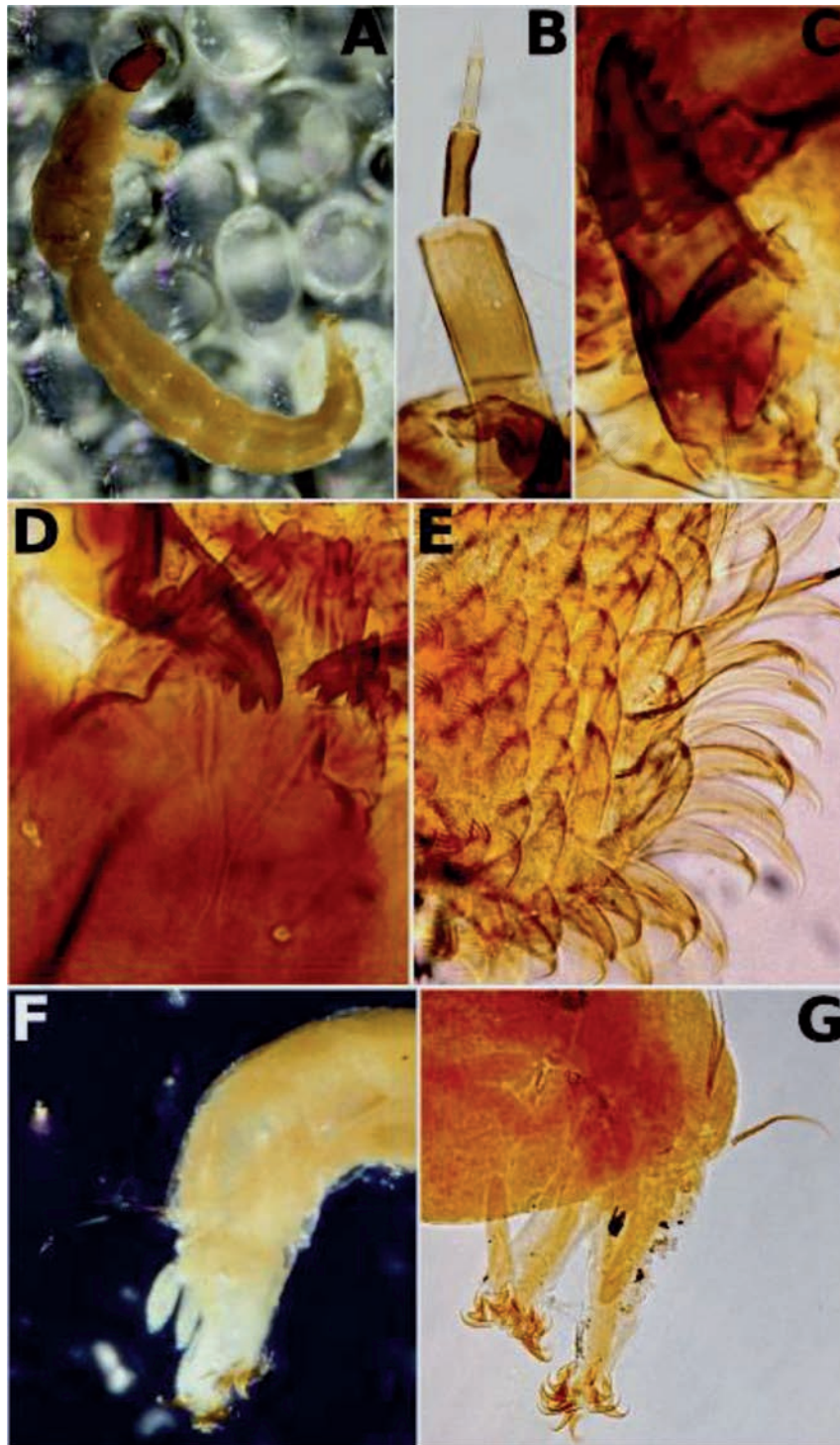


Figure 93. *Thienemanniella taurocapita* Sæther, larva (A-G). A) Larva; B) Antenna; C) Mandible; D) Mentum; E) Claws of anterior parapod; F) Posterior portion of the larva; G) Mounted posterior portion of the larva.

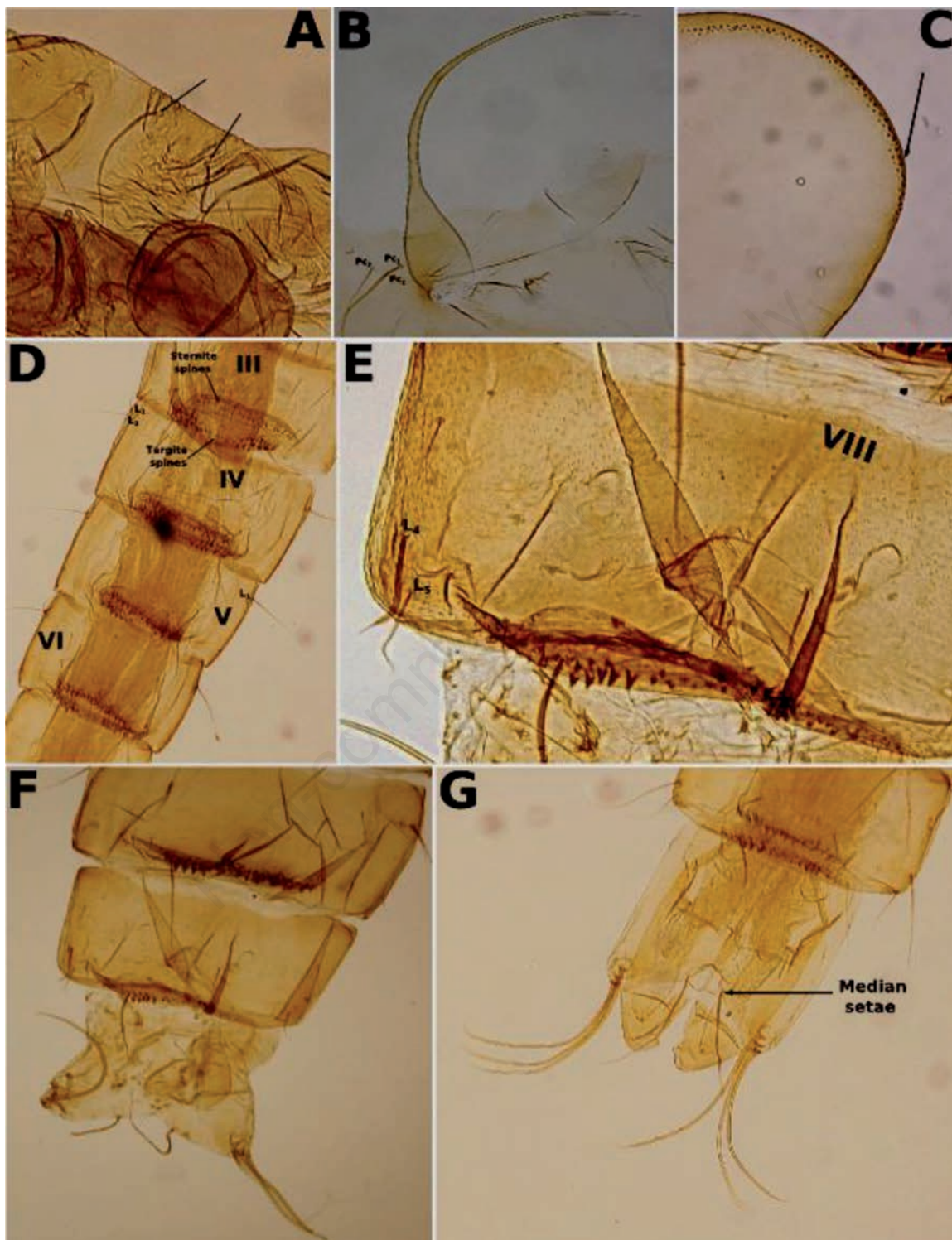


Figure 94. *Tvetenia bavarica* (Goetghebuer), pupa (A-G). A) Frontal apotome, arrows indicate the frontal setae; B) Thoracic horn and precorneal setae; C) Tip of wing sheet, arrow indicates the pearl rows and spine-like structures; D) Segments III-VI; E) Segment VIII; F) Female genitalia sacs and anal lobes; G) Male genitalia sacs and anal lobes.

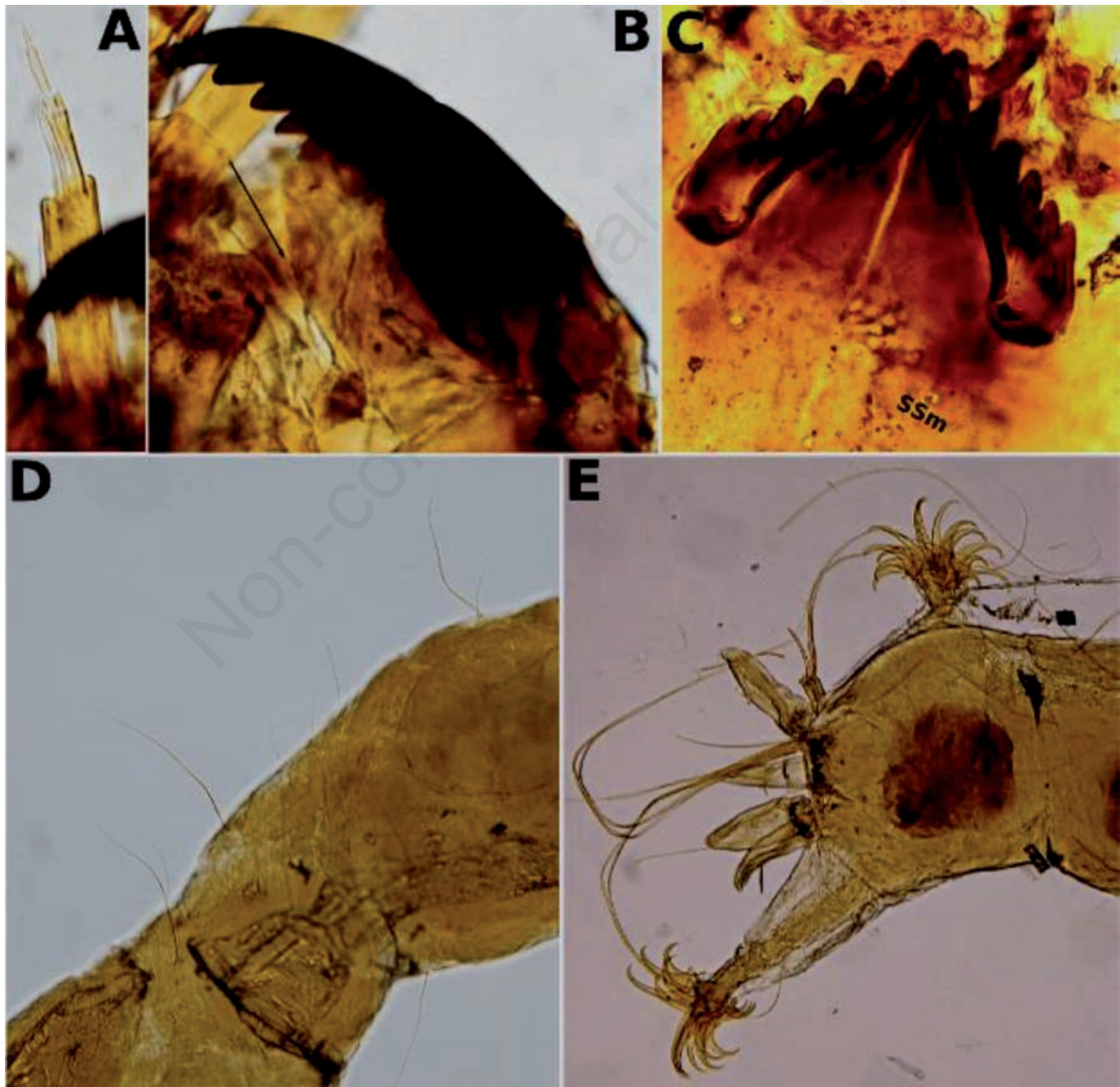


Figure 95. *Tvetenia cf. bavarica* (Goetghebuer), larva (A-E). A) Antenna; B) Mandible, arrow indicates the spines on inner ridge; C) Mentum; D) Abdominal setae; E) Posterior portion of the larva.

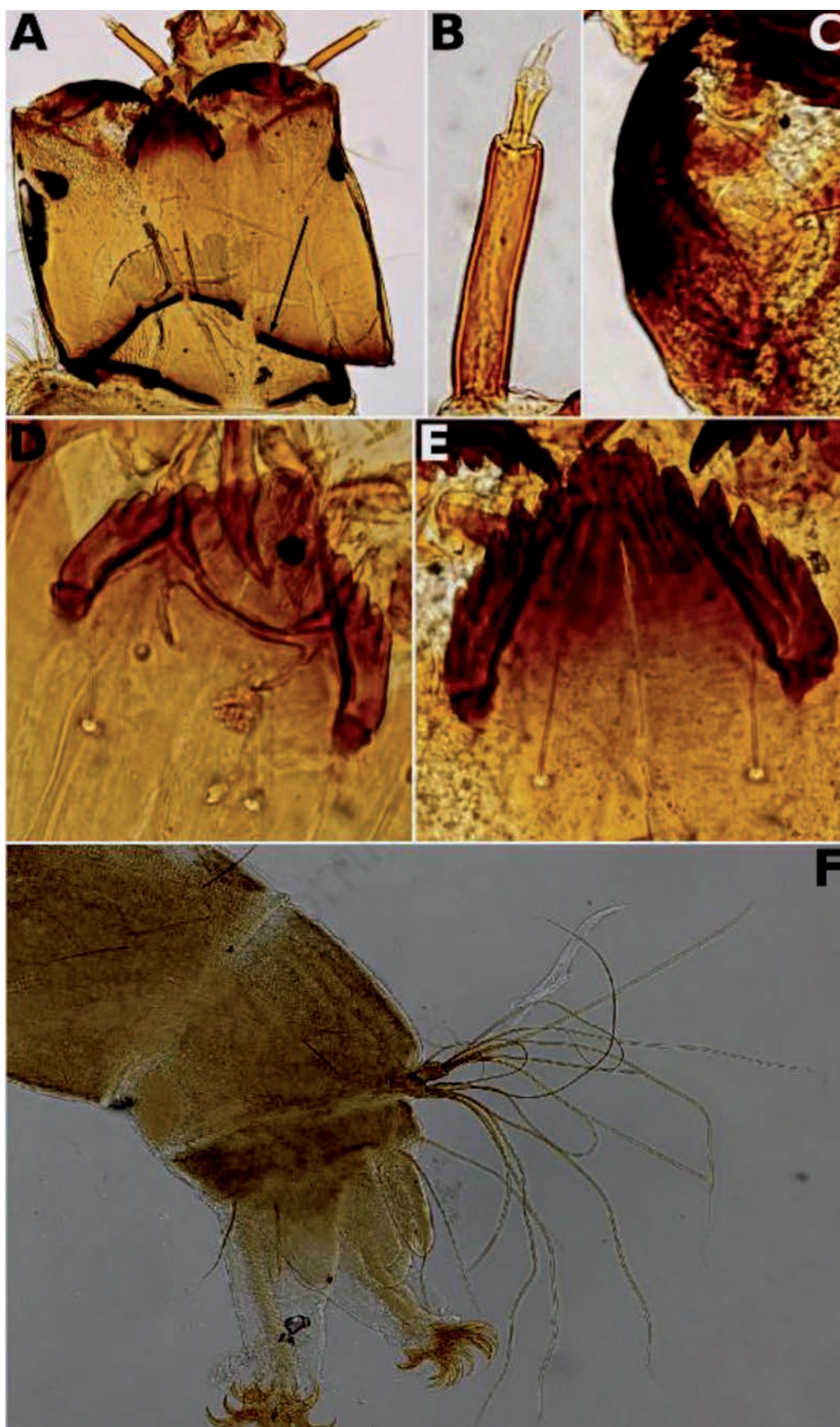


Figure 96. *Tvetenia discoloripes* group, larva (A-F). A) Head, arrow indicates the postoccipital margin; B) Antenna; C) Mandible; D) Mentum with worn central and 1st lateral teeth; E) Mentum; F) Posterior portion of the larva.

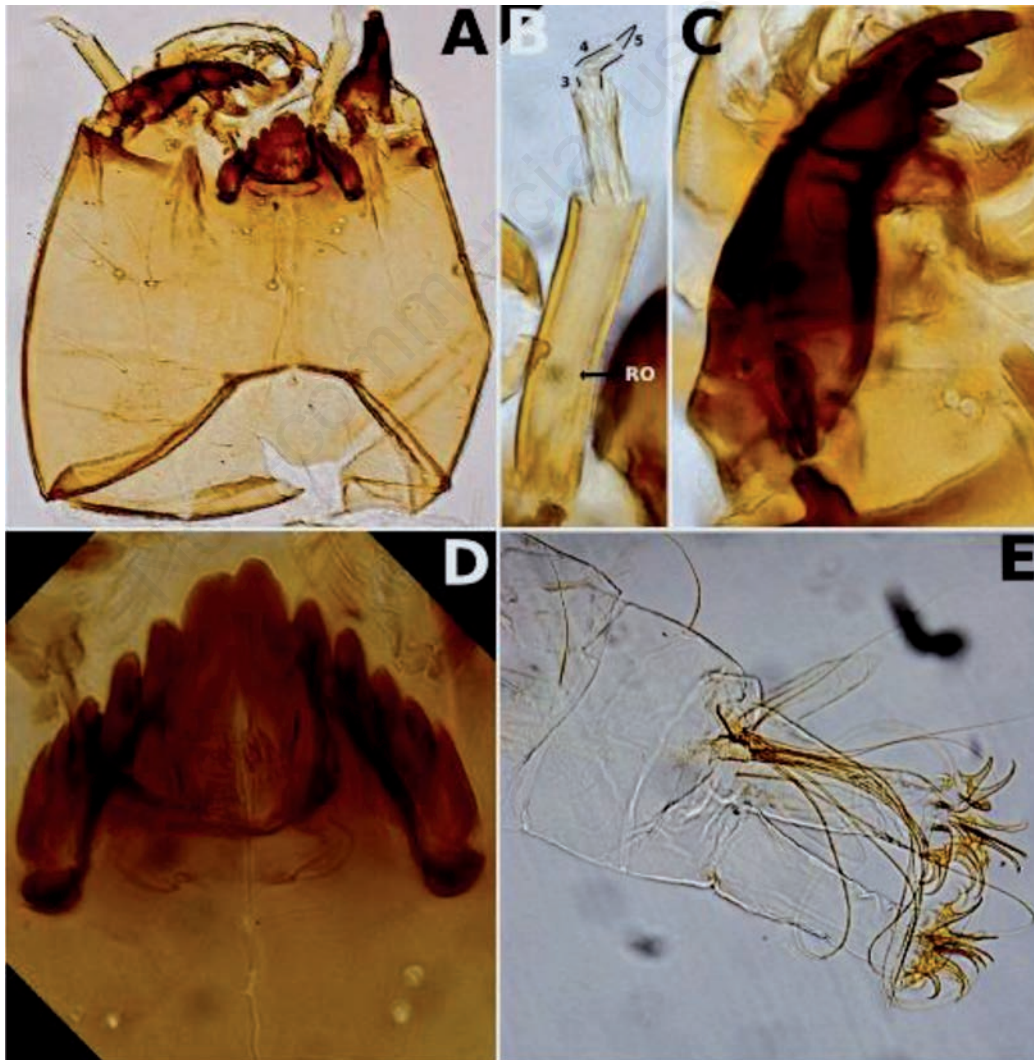


Figure 97. *Tvetenia paucunca* (Sæther), larva (A-E). A) Head; B) Antenna; C) Mandible; D) Mentum; E) Posterior portion of the larva.

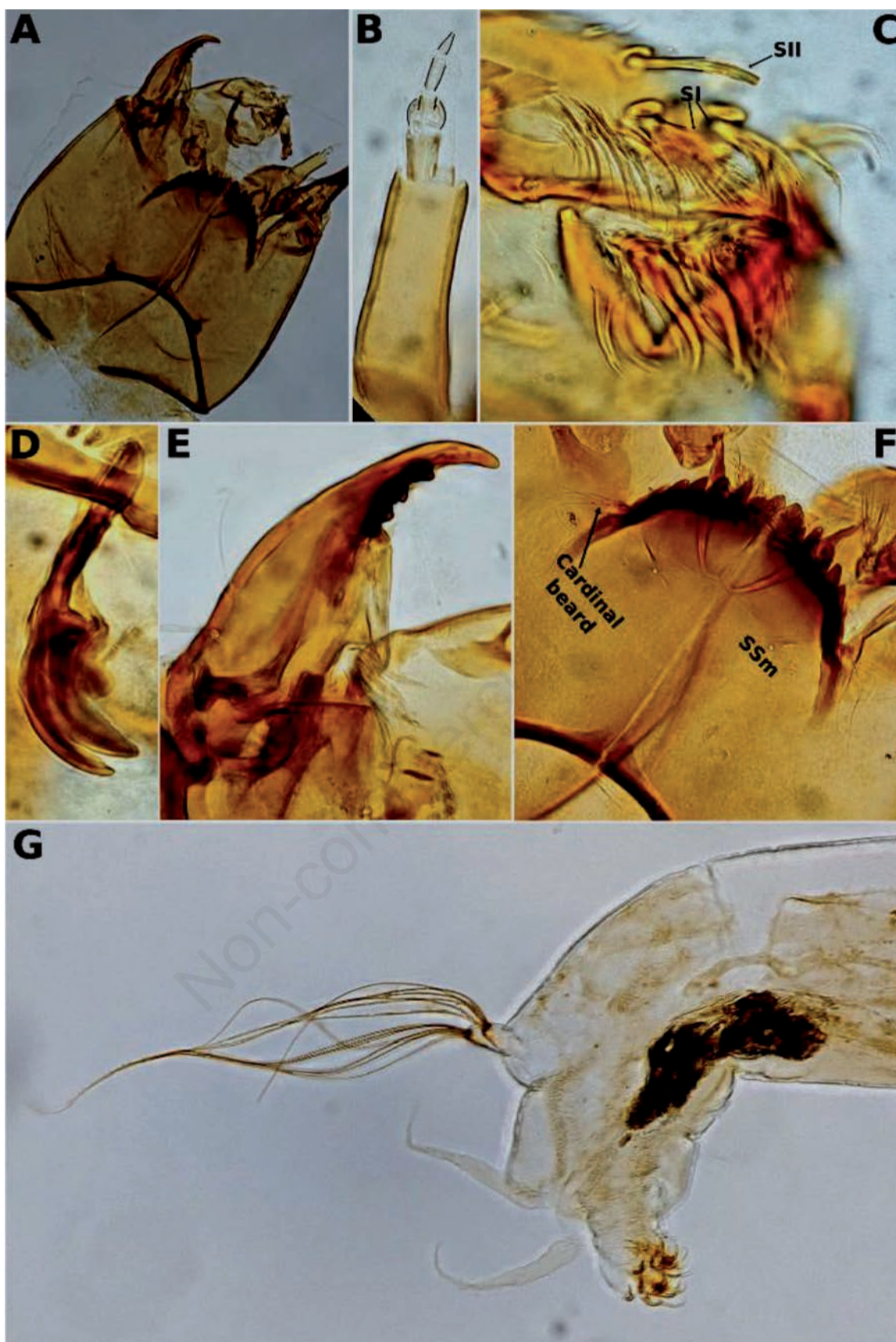


Figure 98. *Zalutschia* sp., larva (A-G). A) Head; B) Antenna; C) Labrum; D) Premandible; E) Mandible; F) Mentum; G) Posterior portion of the larva.

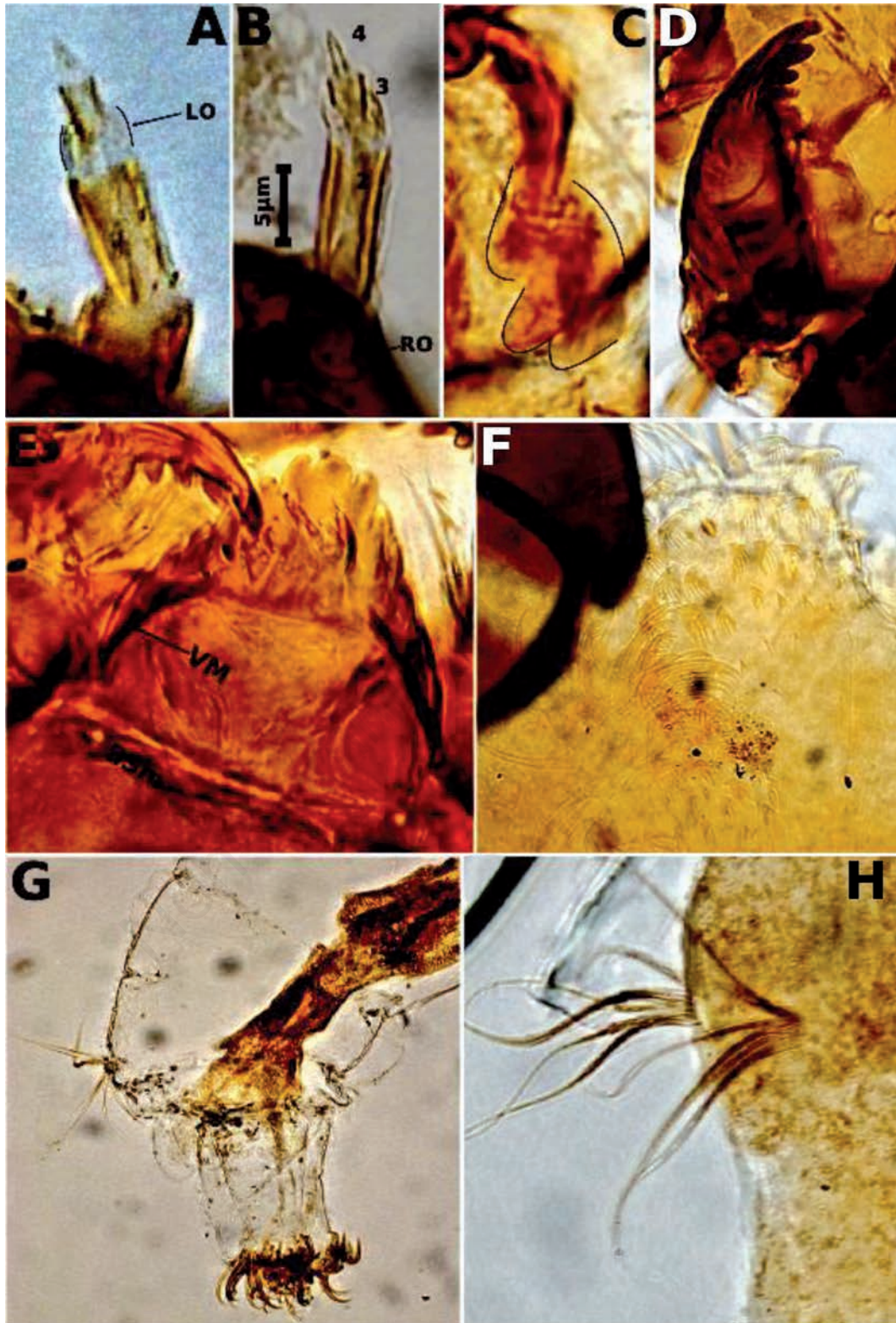


Figure 99. Orthoclaadiinae genus "Bilyj" larva (A-H). A) Antenna, Lauterborn organ; B) Antenna, ring organ; C) Premandible; D) Mandible; E) Mentum; F) Claws of anterior parapod; G) Posterior portion of the larva; H) Anal setae.

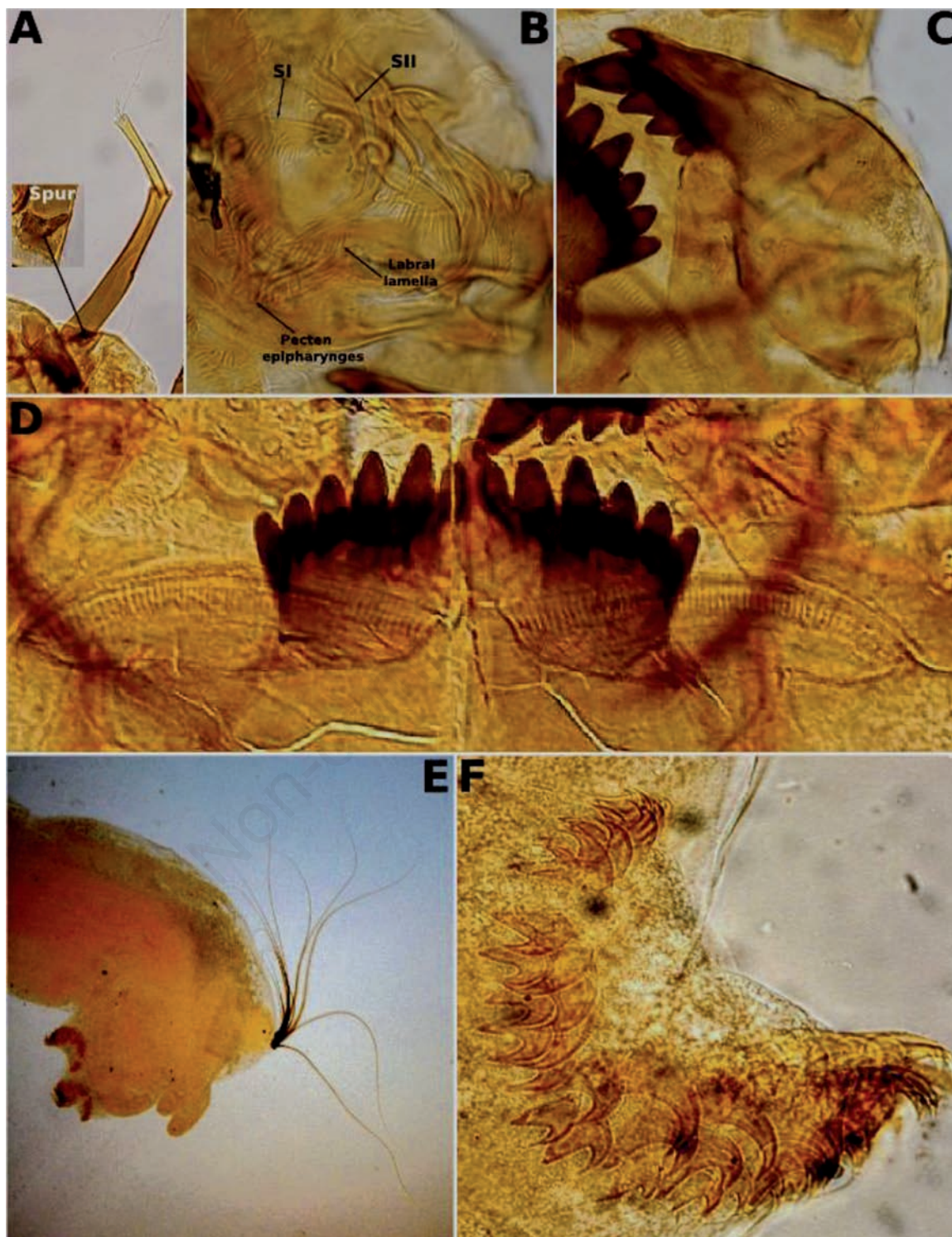


Figure 100. *Micropsectra* sp. 1, larva (A-F). A) Antenna and pedestal's spurs; B) Labrum and Pecten epipharyngis; C) Mandible; D) Mentum; E) Posterior portion of the larva; F) Claws of posterior parapods.



Figure 101. *Micropsectra* sp. 2, larva (A-F). A) Antenna; B) Labrum; C) Mandible; D) Mentum; E) Posterior portion of the larva; F) Claws of posterior parapod.

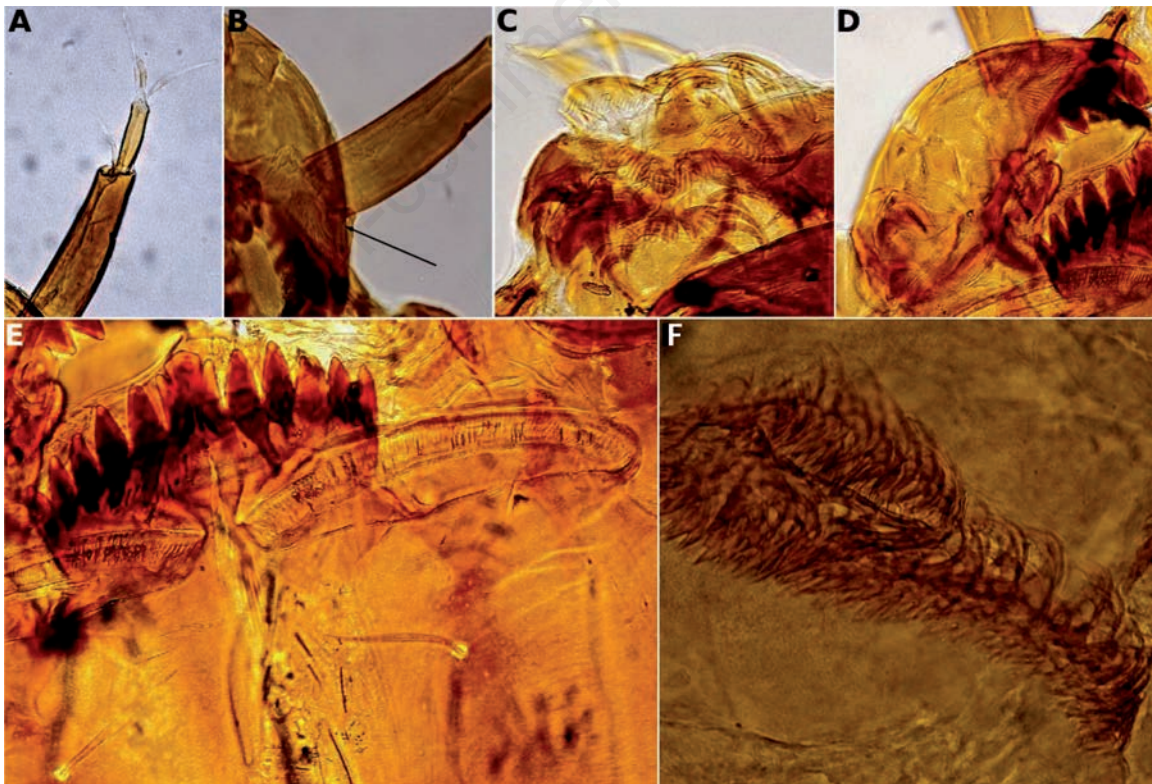


Figure 102. *Micropsectra* sp. 3, larva (A-F). A) Antenna; B) Antenna pedestal; C) Labrum; D) Mandible; E) Mentum; F) Claws of posterior parapod.

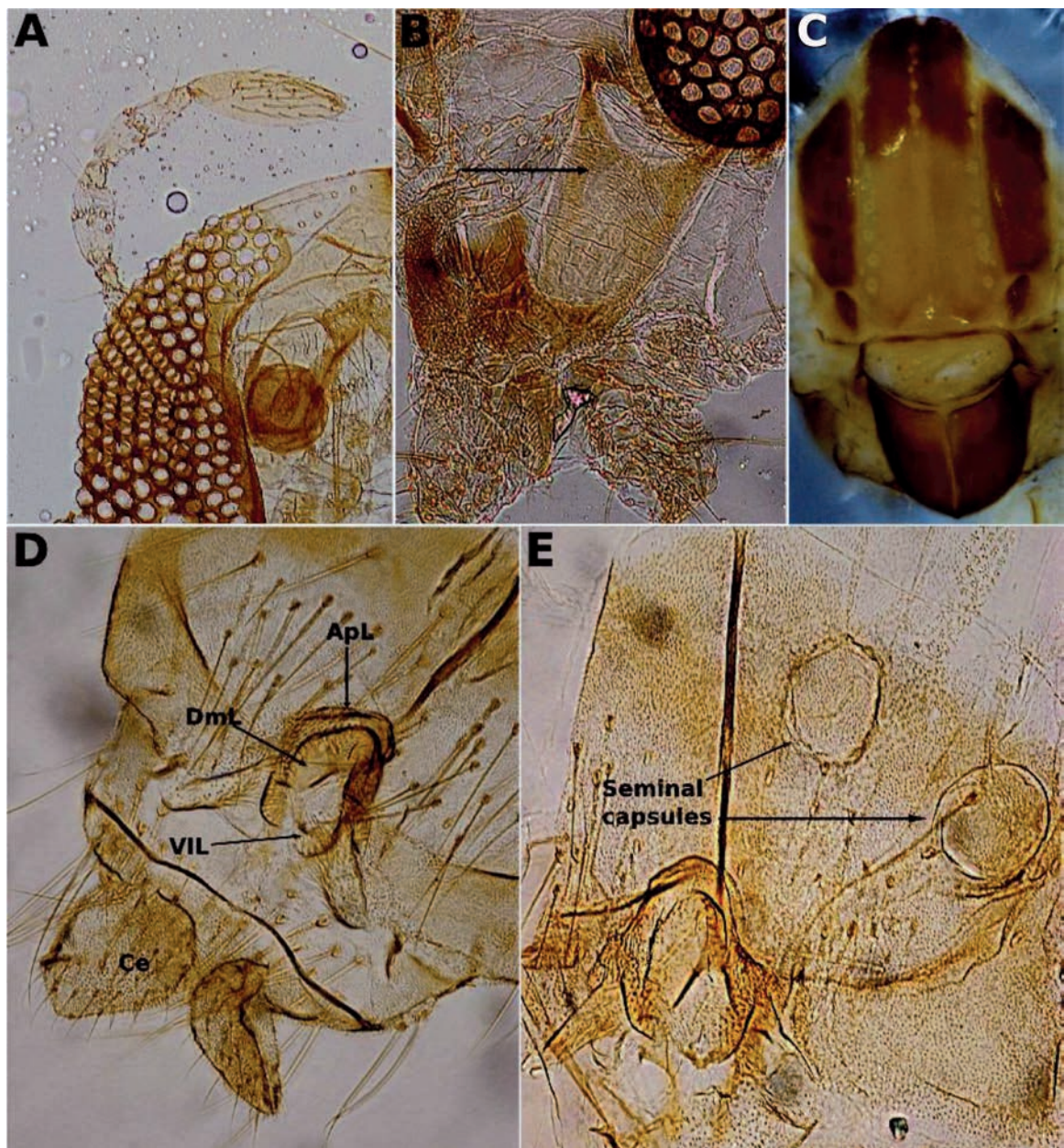


Figure 103. *Micropsectra polita* (Malloch), pharate female (A-E). A) Antenna, eye; B) Clypeus, cibarial pump (arrow); C) Dorsal view of thorax; D) Female's genitalia; E) Seminal capsules.

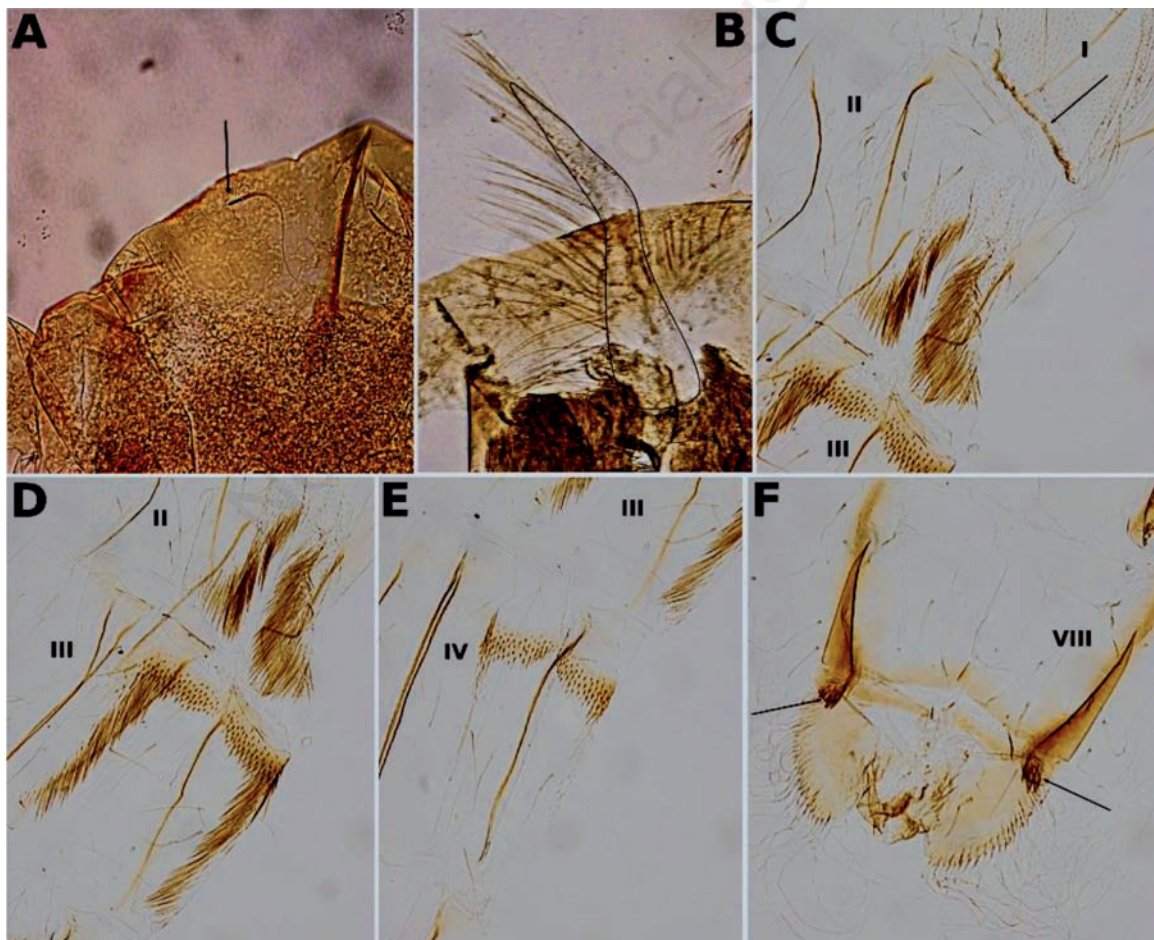


Figure 104. *Microspectra polita* (Malloch), pupa (A-F). A) Frontal apotome, arrow indicates the frontal setae; B) Thoracic horn; C) Segments I-III, arrow indicated the posterior recurved spines; D) Segments II-III; E) Segments III-IV; F) Segment VIII, arrows indicate the anal comb, female's genitalia sacs and anal lobes.

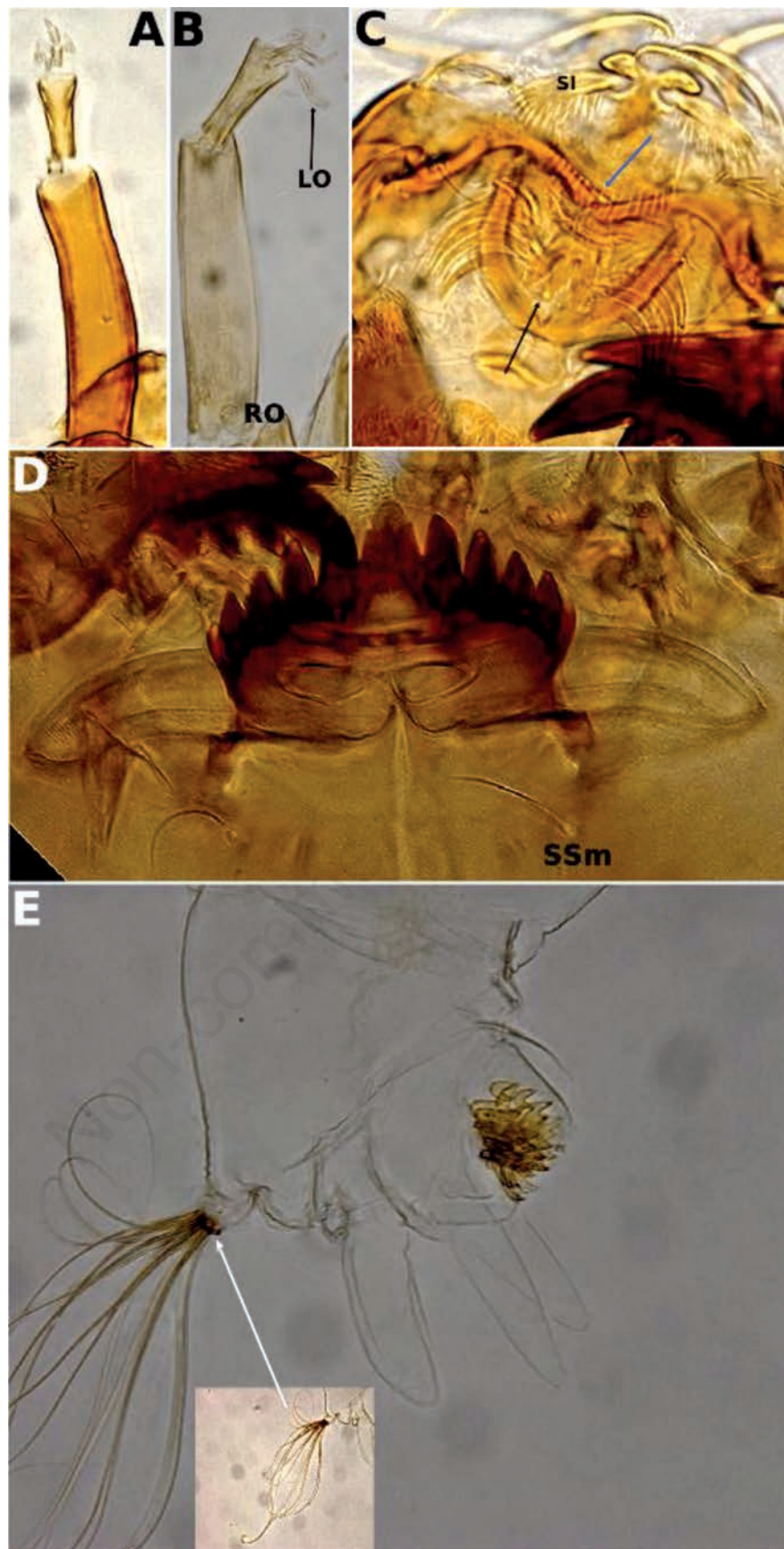


Figure 105. *Paratanytarsus* sp., larva (A-E). A) Antenna; B) Antenna, LO and RO; C) Labrum, labral lamella (blue arrow), pecten epipharyngis (black arrow); D) Mentum; E) Posterior portion of the larva.

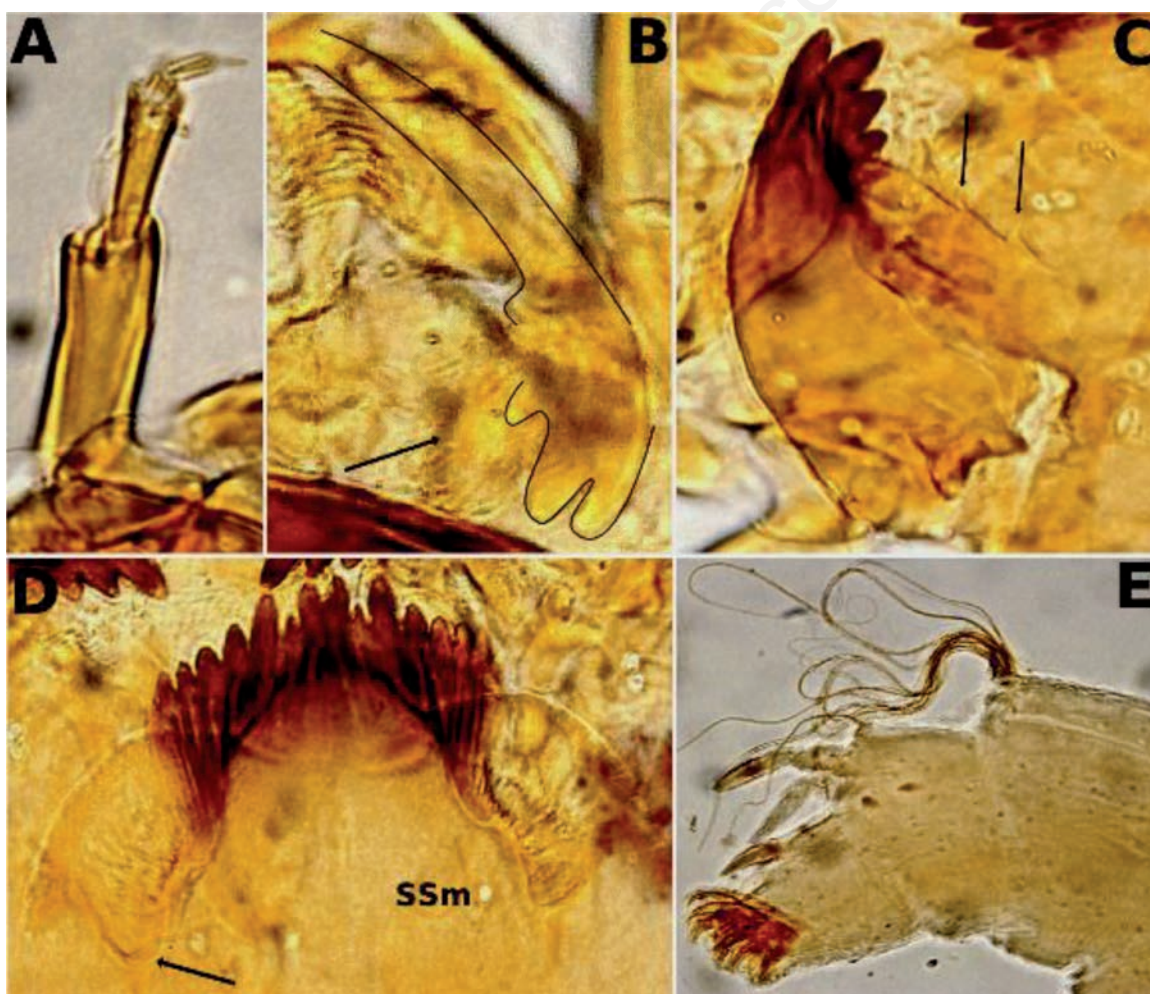


Figure 106. *Polypedilum (Uresipedilum) cf. flavum* (Johannsen), larva (A-E). A) Antenna; B) Premandible, arrow indicates the brush; C) Mandible, arrows indicate the inner spines; D) Mentum, arrow indicates the posterior lobe of VmP; E) Posterior portion of the larva.

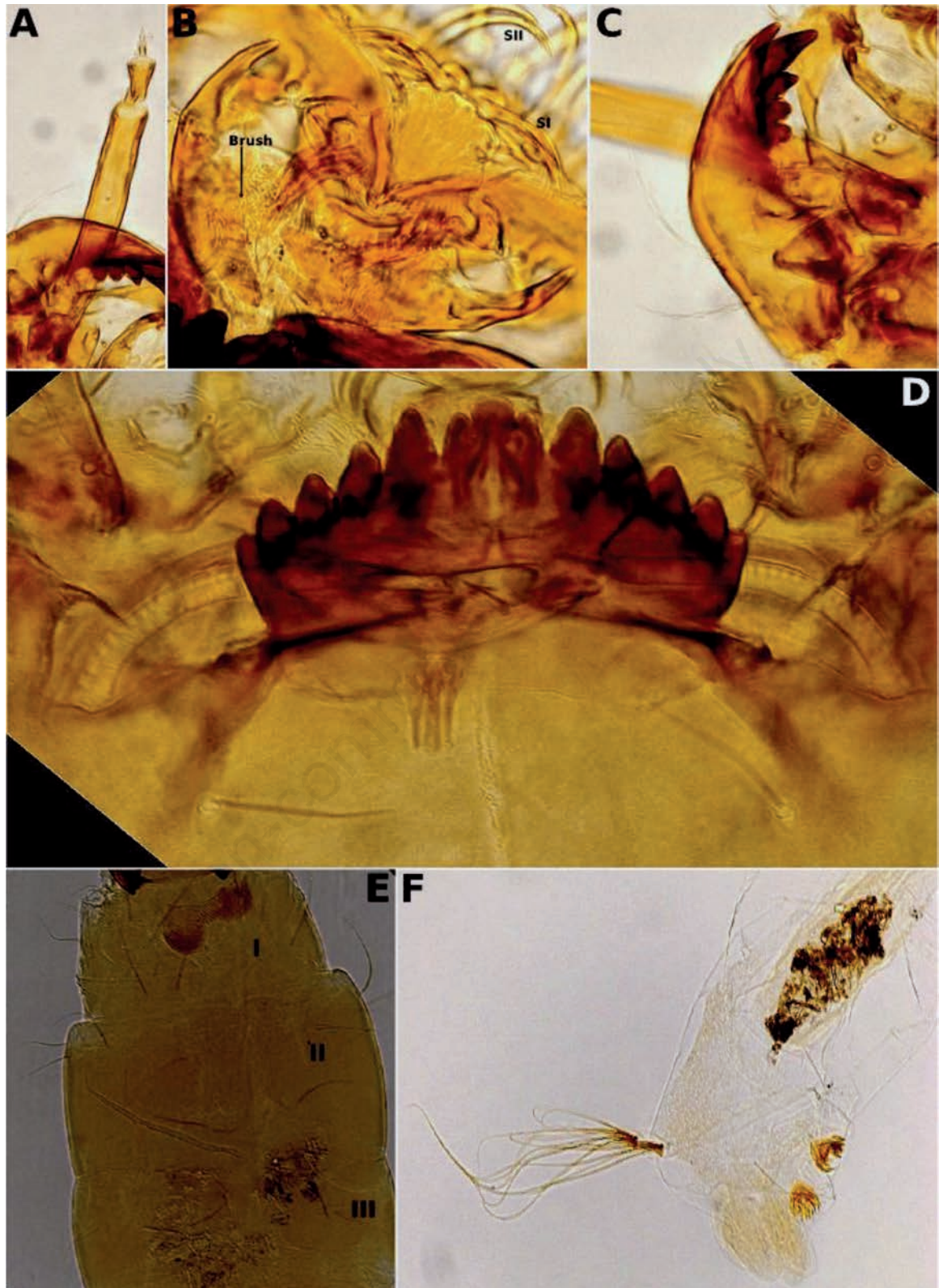


Figure 107. *Rheotanytarsus* sp., larva (A-F). A) Antenna; B) Labrum, labral lamella, pecten epipharyngis, premandibles; C) Mandible; D) Mentum; E) Body segments I-III; F) Posterior portion of the larva.

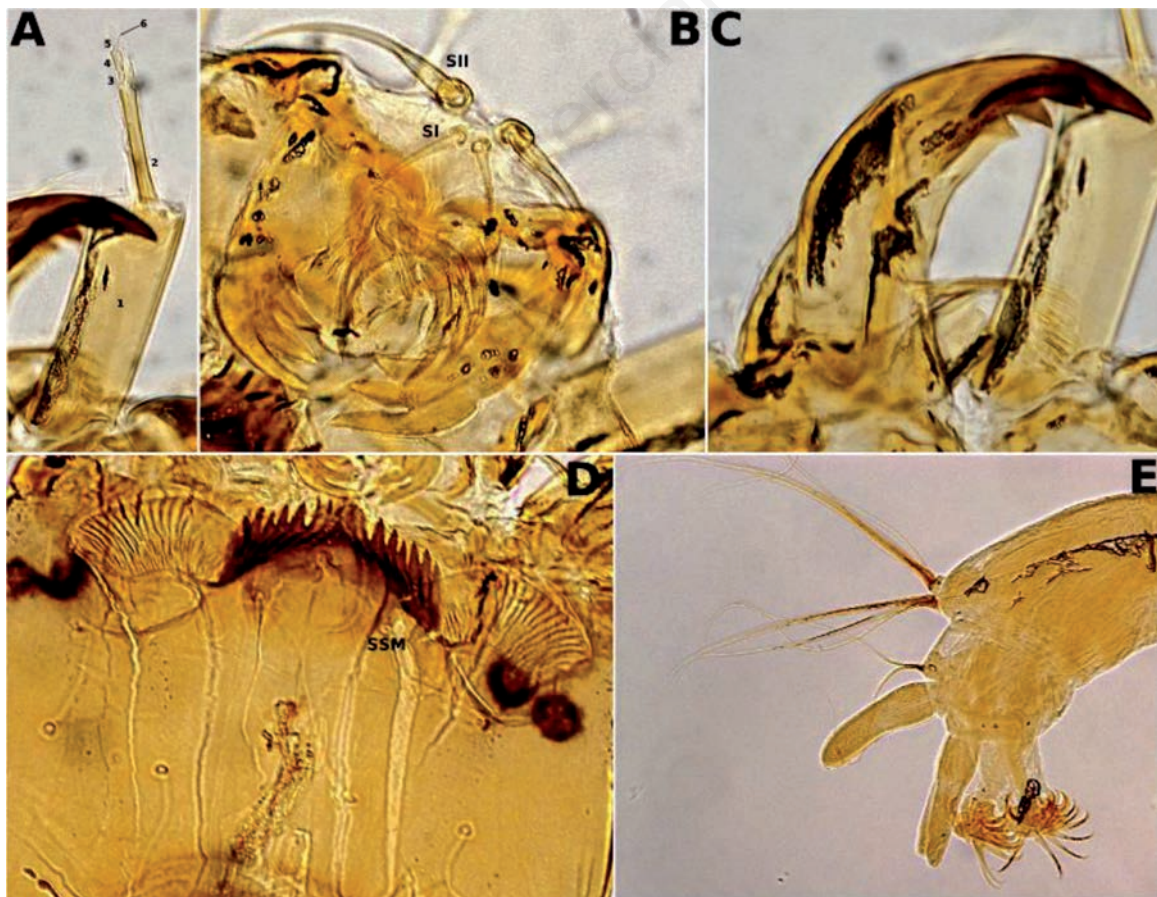


Figure 108. *Saetheria tylus* (Townes), larva (A-E). A) Antenna; B) Labrum, premandibles; C) Mandible; D) Mentum; E) Posterior portion of the larva.

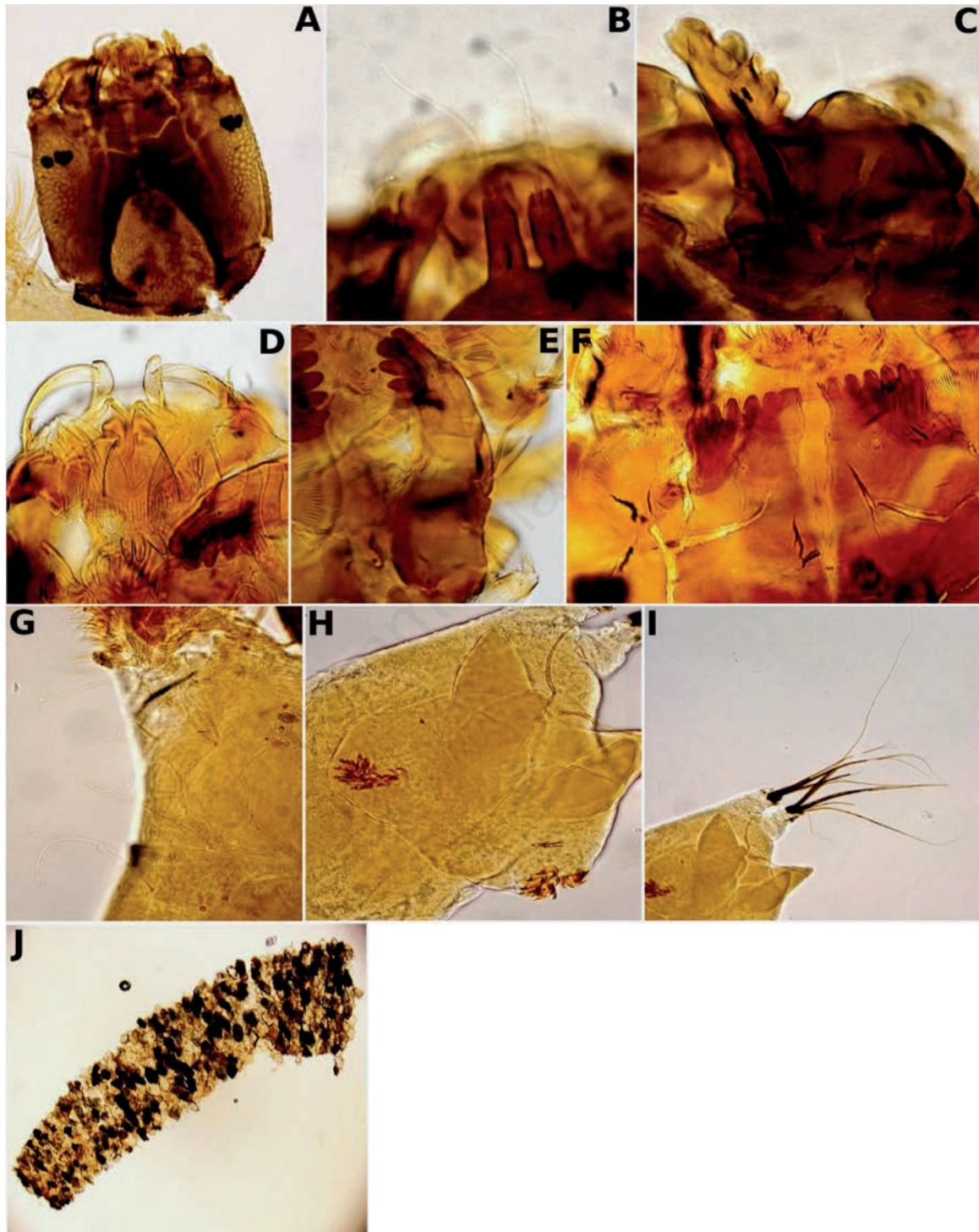


Figure 109. *Stempellina* sp., larva (A-J). A) Head sculpturing; B) S3; C) Antennal pedestal; D) Labrum, pecten epipharyngis; E) Mandible; F) Mentum; G) Abdominal setae; H) Posterior portion of the larva; I) Procercus and apical setae; J) Larval case.

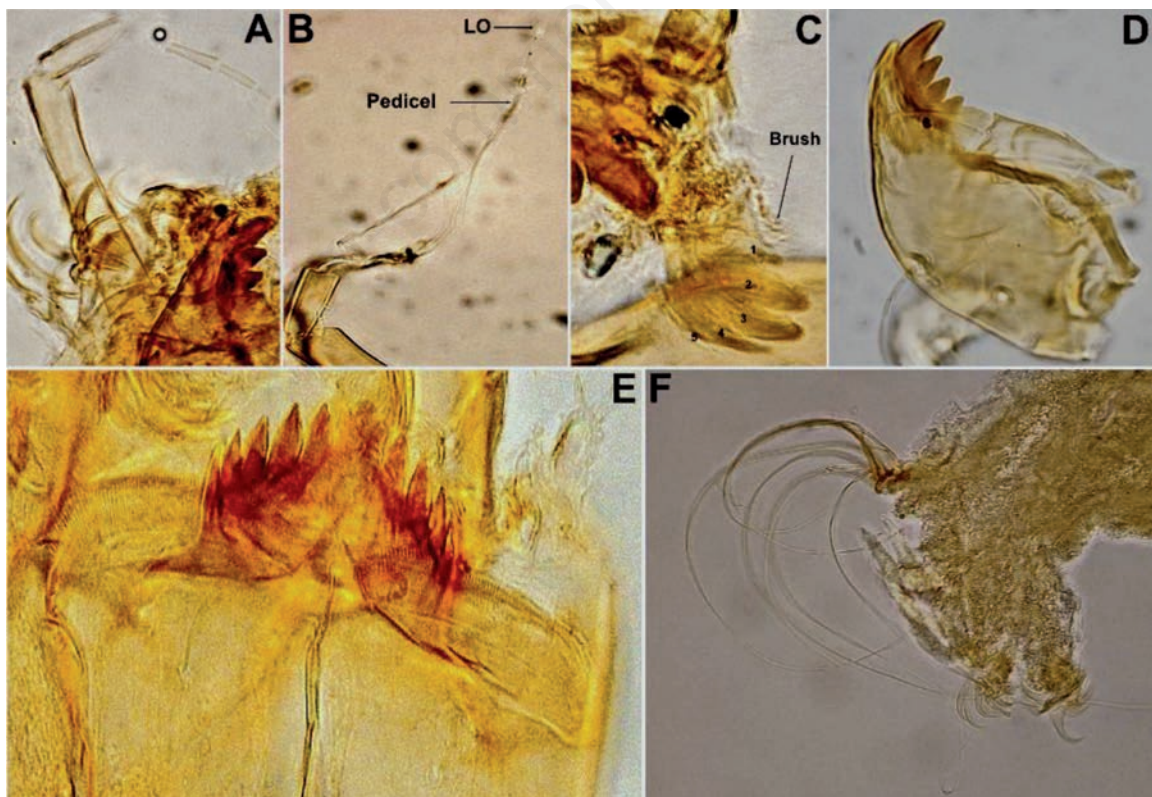


Figure 110. *Tanytarsus chinensis* group sp., larva (A-F). A) Antenna; B) Lauterborn organ and its pedicel; C) Premandible; D) Mandible; E) Mentum; F) Posterior portion of the larva.

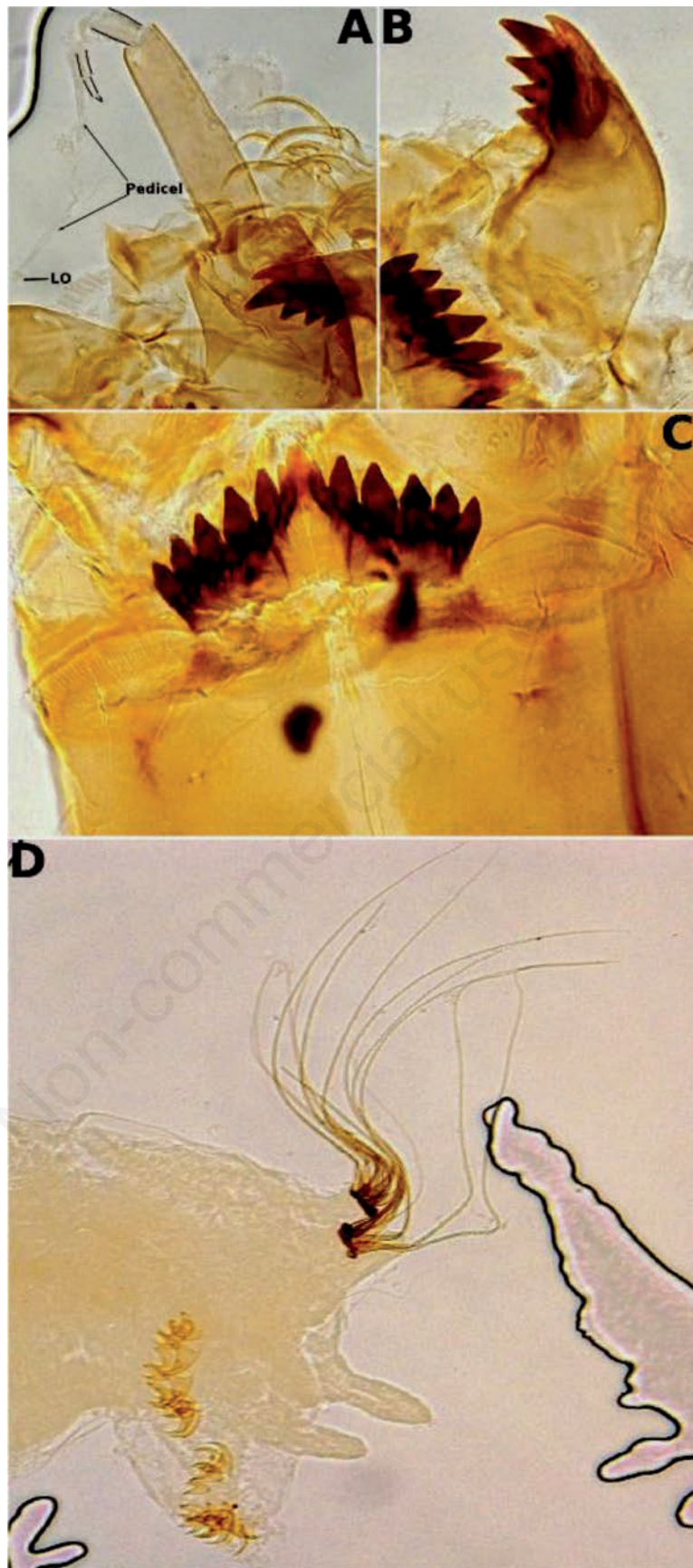


Figure 111. *Tanytarsus* sp., larva (A-D). A) Antenna; B) Mandible; C) Mentum; D) Posterior portion of the larva.