

# Non-operative management in blunt splenic trauma: A ten-years-experience at a Level 1 Trauma Center

Serena Musetti, Federico Coccolini, Dario Tartaglia, Camilla Cremonini, Silvia Strambi, Enrico Cicuttin, Luigi Cobuccio, Ismail Cengeli, Giuseppe Zocco, Massimo Chiarugi

Department of General, Emergency and Trauma Surgery, Pisa University Hospital, Pisa, Italy

## Abstract

Spleen injuries are among the most frequent trauma-related injuries. The approach for diagnosis and management of Blunt Splenic Injury (BSI) has been considerably shifted towards Non-Operative Management (NOM) in the last few decades. NOM of blunt splenic injuries includes Splenic Angio-Embolization (SAE). Aim of this study was to analyze Pisa Level 1 trauma center (Italy) last 10-years-experience in the management of Blunt Splenic Trauma (BST), and more specifically to evaluate NOM rate and failure. Retrospective analysis of all patients admitted with blunt splenic trauma was done. They were divided into two groups according to the treatment: hemodynamically unstable patients treated operatively (OM group) and patients underwent a non-operative management (NOM group). The CT scan performed in all NOM group patients. Univariate analysis was performed to identify differences between the two groups. Multivariate analysis adjusting for factors with a p value < 0.05 or with clinical relevance was used to identify possible risk factors for NOM failure.

193 consecutive patients with blunt splenic trauma were admitted. Emergency splenectomies were performed in 53 patients (OM group); 140 were managed non-operatively with or without SAE (NOM group). NOM rate in high grade injuries is 57%. Overall NOM failure rate is 9%, and success rate in high grade splenic injuries is 48%; multivariate analysis showed AAST score  $\geq 3$  as a risk factor for NOM failure. Non-operative management currently represents the gold standard management for hemodynamically stable patient with blunt splenic trauma even in high grade splenic injuries. AAST  $\geq 3$  spleen lesion is a failure risk factor but not a contraindication to for non-operative management.

## Introduction

Trauma represents the 4<sup>th</sup> cause of death in the world population, and it's the first cause of death between the under-40 population of high-income countries. Up to 20-30% of polytraumatized patients, are likely to have abdominal organ injuries.<sup>1-3</sup> Spleen injuries are one of the most frequent trauma-related injuries, especially in case of blunt abdominal trauma.<sup>4</sup> During the last few decades, the management of stable hemodynamic patients with Blunt Splenic Trauma (BST) has considerably shifted towards Non-Operative Management (NOM).

At the beginning of 20<sup>th</sup> century, the immunological function of the spleen was widely demonstrated.<sup>5-16</sup>

Actually NOM of blunt splenic injuries has been widely accepted and it was also facilitated by the implementation of interventional radiology techniques.<sup>17-19</sup> Splenic Angioembolization (SAE), was initially utilized to reduce spleen volume in hypersplenism.<sup>20</sup> In 1995, Sclafani *et al.*<sup>21</sup> first introduced the concept of the splenic angioembolization as an effective tool in splenic trauma management. Nowadays, the majority of hemodynamically stable ST are treated nonoperatively. NOM includes observation and splenic angio-embolization. NOM presents evident benefits as avoiding a surgical intervention, preserving the spleen and its immunological function in order to prevent OPSI, reducing hospital costs, intra-abdominal complications rate and blood component transfusion.<sup>22-25</sup> Successful rate of conservative management is reported to be nearly 90%, in high-volume trauma centers with all the conditions previously described (OR, ICU, radiology 24/7 available).<sup>23,26</sup> NOM failure rate, defined as the need for splenectomy in BST patients who have been initially approached non-operatively, ranges between 4 and 15%.<sup>23,26-36</sup> Many studies attempted to identify possible risk factors for NOM failure.<sup>4,26,27,33,37-39</sup> Currently, there's no clear-cut conclusion yet, concerning which are sure risk factors for the NOM failure. Present study reports the last 10-years-experience of the Pisa level I Trauma Center, focusing on the success rate of NOM and trying to identify any risk factor for NOM failure.

Correspondence: Serena Musetti, Department of General, Emergency and Trauma Surgery, Pisa University Hospital, Via Paradisa, 2, 56124 Pisa, Italy. Tel.: +39.050.996085.  
E-mail: s.musetti@hotmail.com

Key words: Trauma; spleen; mortality; morbidity; classification; results.

Contributions: SM, FC, DT, CC manuscript conception and draft MC, EC, SS, LC, IC, GZ revision and implementation, all authors contributed to editorial changes in the manuscript, all authors read and approved the final manuscript.

Conflict of interest: The Authors declare no conflict of interest

Availability of data and materials: All data generated or analyzed during this study are included in this published article.

Ethics approval and consent to participate: Not applicable

Informed consent: Not applicable.

Received for publication: 21 December 2021.

Revision received: 9 March 2022.

Accepted for publication: 9 March 2022.

This work is licensed under a Creative Commons Attribution 4.0 License (by-nc 4.0).

©Copyright: the Author(s), 2022

Licensee PAGEPress, Italy

Emergency Care Journal 2022; 18:10339

doi:10.4081/ecj.2022.10339

## Materials and Methods

### Population

This is a single center retrospective study, including all patients admitted to the Pisa Level 1 Trauma Center (Italy), with BST between December 2010 and September 2021.

Trauma management is multidisciplinary (Surgeon, Emergency Medicine Physician, Anesthesiologist). Patients hemodynamically unstable not responder to intravenous fluid administration with positive E-FAST were directly undergone to emergency surgical procedures. All hemodynamically stable patients had a contrast-enhanced CT scan. Injuries were classified according to the American Association for the Surgery of Trauma Organ Injury Scale (AAST-OIS) grading system.<sup>40</sup>

The detection at CT scan of vascular lesion such as contrast blush or pseudoaneurysm was an indication to perform angiography with subsequent angio-embolization.

Two groups were identified: Operative Management group (OM group), including patients who underwent to emergency splenectomy during the index intervention, and the Non-Operative Management group (NOM group) in which patients were treated conservatively, with or without SAE. The primary aim of this study

was to identify the NOM failure rate within our cohort, defined as the needed for a splenectomy when first attempt had been spleen-preserving, and any potential risk factor. Morbidity and mortality, hospital length of stay, were our secondary outcomes.

### Data Collection

Following data were collected: demographic data (age and gender), injury data [mechanism of injury (MVC, MCC, Fall...), AAST grade, Presence of vascular lesion, ISS value at admission], complications (hematologic, infection), outcomes (hospital length of stay, ICU-length of stay, mortality). The cut-off value "age > 55" was used considering its role as a possible risk factor for NOM failure,<sup>23</sup> and that's been demonstrated how elderly patients who fail NOM, has a higher risk of mortality compared to younger NOM-failure population.<sup>41</sup> Data collection was performed using a computerized spreadsheet and analyzed using SPSS Statistics 23 (SPSS Inc., Chicago, IL). Descriptive statistics were calculated for all clinical variables described. Continuous variables are represented as median [Interquartile Range (IQR)]. Categorical variables are presented as n (%). Univariate analysis was performed to identify differences between the two groups OM and NOM; we also compared patients who underwent only monitoring with the ones who underwent SAE, within the NOM group. The Mann-Whitney

**Table 1. Patients characteristics, clinical data and outcomes.**

	Total 193 (%)	Operative management (OM) 53 (28%) (%)	Non-operative management (NOM) 140 (72%) (%)	P value
<b>DEMOGRAPHICS</b>				
Age	48 (28-62 y.o.)	54 (26-64 y.o.)	45 (28-61 y.o.)	0.442
Age ≥ 55	74 (38)	25 (47)	49 (35)	0.137
Gender				0.359
Female	49 (25)	16 (30)	33 (24)	
Male	144 (75)	37 (70)	107 (76)	
<b>INJURY DATA</b>				
Mechanism of injury				0.733
MVC	87 (45)	26 (49)	61 (44)	
MCC	44 (23)	10 (19)	34 (24)	
AVP	10 (5)	3 (6)	7 (5)	
Fall	45 (23)	11 (21)	34 (24)	
Crush	7 (4)	3 (6)	4 (3)	
AAST grade				<0.001
1	36 (19)	3 (6)	33 (24)	
2	47 (24)	3 (6)	44 (31)	
3	67 (35)	18 (34)	49 (35)	
4	35 (18)	23 (43)	12 (9)	
5	8 (4)	6 (11)	2 (1)	
AAST ≥ 3	110 (57)	47 (89)	63 (45)	<0.001
ISS	18 (12-27)	27 (20-32)	16 (9-25)	<0.001
ISS > 15	122 (63)	50 (94)	72 (51)	<0.001
Vascular lesion	48 (25)	3 (6)	45 (32)	<0.001
<b>COMPLICATIONS</b>				
Infection	10 (5)	6 (11)	4 (3)	0.028
Hematologic	7 (4)	4 (8)	3 (2)	0.09
<b>OUTCOMES</b>				
ICU-LOS	3 (1-10)	3 (1-8)	3 (1-10)	0.259
HLOS	10 (7-16)	8 (5-16)	10 (7-17)	0.072
Mortality	10 (5)	7 (13)	3 (2)	0.005

MVC: Motorvehicle Crash; MCC:Motorcycle Crash; AVP: auto vs pedestrian; AAST: American Association for the Surgery of Trauma; ISS: Injury Severity Score; ICU-LOS: Intensive Care Unite-Length of Stay; HLOS: Hospital Length of Stay

test was used to compare continuous variables. Pearson's chi-squared test or Fisher exact test were used to compare categorical variables. Multivariate analysis adjusting for factors with a p value < 0.05 or with clinical relevance was used to identify possible risk factors for NOM failure.

## Results

Over the study period, 193 patients presented with blunt splenic trauma: 144 male (75%), the median age of the population was 48 years. Motor-vehicle crash was the most frequent mechanism of injury: MVC (Motor-vehicle Crash) 45%, MCC (Motorcycle Crash) 23%, fall 23%, AVP (Auto Vs. Pedestrian) 5% and crush 4%.

One hundred and forty patients (72%) were managed conservatively (NOM group), fifty-three patients underwent immediate emergency splenectomy (OM group; Table 1). NOM group includes thirty-three female (24%) and one-hundred and seven male (76%), with a median age of forty-five years. 35% of the NOM population was > 55 years old, within the OM group this percentage was 47%.

Comparing the characteristics of these two groups (Table 1), the AAST grade was higher in the OM group, same when using the AAST $\geq$ 3 cut-off value. Number of patients with ISS >15 was higher in the OM group.

Within the NOM population, patients treated only with monitoring and those underwent SAE (EMBO sub-group) were compared (Table 2). Overall, NOM failure rate was 9%; there was no statistically significant difference regarding the failure rate

between the two sub-groups, with a p = 0.086. The H-LOS was higher in the EMBO sub-group, likewise the AAST grades and the ISS values. Vascular lesions finding at admission CT scan, was higher in the EMBO sub-group, an intrinsic data considering that the presence of vascular lesions represents the main indication to the angioembolization itself.

Table 3 shows a comparison between different types of angioembolization (proximal, distal, combined) regarding failure rate and causes. Neither the reason of failure nor the failure rate were related to the type of SAE.

Logistic regression (Table 4) identified AAST $\geq$ 3 as an independent risk factor for NOM failure (p di 0.03; odds ratio=4.876). ISS>15 was excluded from this model because of its co-linearity with AAST $\geq$ 3.

## Discussion

NOM is nowadays the standard of practice for BSI in hemodynamically stable patients<sup>23</sup> or rapid responder ones, without associated lesion requiring surgery.<sup>23,27,37</sup> NOM in higher grade splenic injuries should only be attempted in hospital with 24/7 available operating room, ICU, radiology department and blood bank. The most recently published guidelines,<sup>23</sup> confirmed hemodynamic status as the cornerstone for the management choice in patients with splenic injuries. A new classification system has also been introduced: splenic injuries were usually classified according to the AAST grading system,<sup>40</sup> which is an "anatomical" classification, while WSES classification is based on both "anatomical" grade (AAST-OIS grading) of the lesion, and the physiological status of

**Table 2. Non-operative management.**

	Total 140 (%)	NOM 76 (54%) (%)	NOM + AE 64 (46%) (%)	P value
<b>DEMOGRAPHICS</b>				
Age	45 (28-61)	49 (28-66)	42 (29-57)	0.258
Age $\geq$ 55	49 (35)	30 (40)	19 (30)	0.28
<b>INJURY DATA</b>				
AAST grade				<0.001
1	33 (24)	31 (41)	2 (3)	
2	44 (31)	33 (43)	11 (17)	
3	49 (35)	12 (16)	37 (58)	
4	12 (9)	-	12 (19)	
5	32 (1)	-	2 (3)	
AAST $\geq$ 3	63 (45)	12 (16)	51 (80)	<0.001
ISS	16 (9-25)	13 (8-18)	22 (13-27)	<0.001
ISS > 15	72 (51)	25 (33)	47 (73)	<0.001
Vascular lesion	45 (32)	2 (3)	43 (6)	<0.001
<b>OUTCOMES</b>				
Failure	13 (9)	4 (5)	9 (14)	0.086
Failure Reason				0.070
Bleeding	7 (5)	4 (100)	3 (33)	
Abscess	6 (4)	-	6 (67)	
ICU-LOS	3(1-10)	3 (1-12)	3 (2-10)	0.318
HLOS	10 (7-17)	8 (6-12)	13 (10-21)	<0.001
Mortality	3 (2)	-	3 (5)	0.093

AAST: American Association for the Surgery of Trauma; ISS: Injury Severity Score; ICU-LOS: Intensive Care Unit Length of Stay; HLOS: Hospital Length of Stay.

the patients.<sup>42</sup> This concept endorses the importance of evaluating BST patients in a global and multidisciplinary way to increase the NOM rate, despite of the anatomical severity of injury.

The advantages of NOM are unquestionable: the conservative management avoids surgery, preserves the spleen reducing the possible immunological weakness, reduces comorbidity, mortality and is resource and costs-saving.<sup>22-25</sup> In this study too, the infectious complications (p-value <0.028) and the mortality (p-value <0.005) were higher in the OM group. This may be also due however to the different lesions patterns that may be associated to the hemodynamic instability leading to the OM and the consequent physiological derangements.

During the last few decades, the angioembolization has given contributions to the improvement of NOM success rate, especially in high grade injuries. Many authors have underlined the important role of SAE. It has been demonstrated by multi-institutional studies that SAE is an independent indicator of spleen preserving, and that NOM failure rate is lower in trauma center with higher SAE volume,<sup>43</sup> especially in high grade splenic injuries.<sup>44</sup> Many systematic review and meta-analyses have upheld the potential impact of SAE in the management of BST.<sup>45-47</sup>

There's different embolization technique such as proximal, distal or combined: the choice between these options is still debated, as present data are still insufficient as emerged from a meta-analysis<sup>48</sup> to define which one may reduce the failure rate. As showed in Table 3, in this analysis there are no significant differences in term of failure between the angioembolization's techniques. The overall NOM failure rate found in this study was 9%, consistent with the literature.<sup>23,27,29,30,36,37,45</sup> Within the NOM group, the subgroup of patients underwent SAE did not experienced a reduced failure rate (p value 0.086). This is not in line with the literature as NOM is a facilitating tool in order to increase the rate of NOM in spleen injuries. This data may be explained with the large time lapse encompassing the study period and therefore the different treatments received from the patients during the eleven years study period.

To ulteriorly improve the success of NOM, more refined failure predictive factors definition should be attempted. During the past decades many retrospective and prospective studies have tried

to defined NOM failure risk factor as vascular lesion at the admission CT-scan, age >55 year old, ISS >15 and AAST grade  $\geq 3$ .<sup>4,23,25,26,31,34,35,36,41,49</sup> Present study reports a frequency of attempted NOM in high-grade injuries of 57%, higher compared to previous published data by the Eastern Association for the Surgery of Trauma published in 2000;<sup>4</sup> moreover NOM success rate NOM in high grade injuries is 48%. In a retrospective study published in 2006,<sup>38</sup> NOM failure in high-grade splenic injuries reached up to 54.6%, in present series is 16%. In other studies the successful rate of NOM in high grade lesions seems higher, achieving 87% of success,<sup>23,27</sup> probably also thanks to the improvement of the angioembolization technique.<sup>50-52</sup>

In this analysis, AAST grade of lesion and ISS were higher in the OM group when compared with NOM one. Despite there's no statistical significance in the hospital length of stay of the two groups, the undisputed advantage of NOM emerges from the analysis of the outcomes: in the conservative group there was a minor rate of infective complications.

Present study multivariate analysis confirmed AAST score  $\geq 3$  is a risk factor for NOM failure. The finding of AAST  $\geq 3$  as a risk factor must not question about the application of NOM even in high-grade splenic injuries. In this experience 45% of NOM group was AAST  $\geq 3$ . In term of the overall population, NOM in the AAST grade injury  $\geq 3$  group was the 57% (n: 110): forty-seven patients (43%) underwent an emergency splenectomy, ten patients (9%), at first approached conservatively, had a splenectomy due to NOM failure (Figure 1). NOM overall success in patients with high grade lesions was 48% in this study: almost half of these patients were able to preserve their spleen and avoiding surgery, underlining the importance of attempting a conservative strategy even in lesion with AAST grade  $\geq 3$ . The complication rate regarding bleeding and abscess rates were 5% and 4% respectively. Confirming the absolute feasibility and safety of NOM in high grade injuries.

The retrospective design of this study represents an implicit limitation, as from the first years of the study up to nowadays tools and protocols for polytraumatized patients management have been implemented.

**Table 3. SAE failure.**

	Proximal AE (%) 26 (40)	Distal AE (%) 28 (44)	Combined AE (%) 10 (16)	P value
Failure	4 (15)	3 (11)	2 (20)	0.709
Failure Reason				0.143
Bleeding	1 (25)	-	2 (100)	
Abscess	3 (75)	3 (100)	-	

**Table 4. Multivariate analysis for failure in patients with blunt splenic trauma.**

	Adjusted p	OR	95 % CI	
Age $\geq 55$	0.450	1.610	0.468	5.534
AAST $\geq 3$	0.031	4.876	1.159	20.519
Vascular lesion	0.827	1.148	0.333	3.955

NOM: Non-Operative Management; AAST: American Association for the Surgery of Trauma; ISS: Injury Severity Score. \*Binary logistic regression was performed with potentially causative variables in which p value was <0.2 in the univariate analysis or clinically relevant. Multi-co-linearity test was checked before doing multivariate analysis. Hosmer & Lemeshow Goodness of fit test p 0.028. AUROC = 0.697 (0.567-0.826).

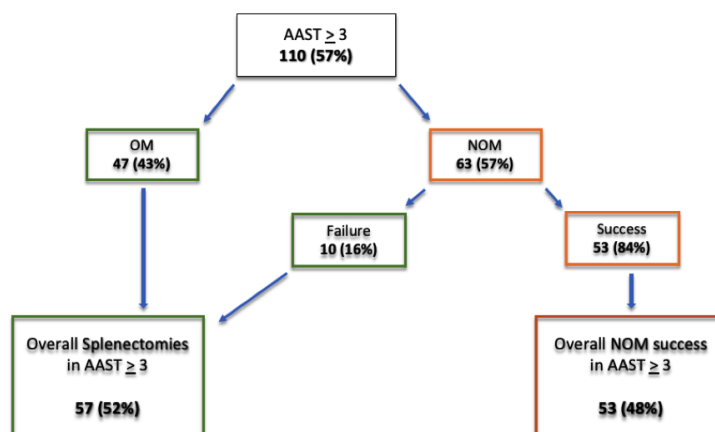


Figure 1. AAST $\geq$ 3 spleen trauma patients flow chart.

## Conclusions

Non-operative management currently represents the gold standard management for hemodynamically stable patient with blunt splenic trauma even in high grade splenic injuries. AAST $\geq$ 3 spleen lesion is a failure risk factor but not a contraindication to for non-operative management.

## References

- Deunk J, Brink M, Dekker HM, et al. Predictors for the selection of patients for abdominal CT after blunt trauma: a proposal for a diagnostic algorithm. *Ann Surg* 2010;251:512-20.
- Sosada K, Wiewióra M, Picuch J. Literature review of non-operative management of patients with blunt splenic injury: Impact of splenic artery embolization. *Wideochirurgia I Inne Techniki Maloinwazyjne* 2014, doi: 10.5114/wiitm.2014.44251.
- Søreide K. Epidemiology of major trauma. *Br J Surg* 2009;96(7):697-8.
- Peitzman AB, Heil B, Rivera L, et al. Blunt splenic injury in adults: Multi-institutional Study of the Eastern Association for the Surgery of Trauma. *J Trauma* 2000;49:177-87; discussion 187-9.
- Morris DH, Bullock FD. The importance of the spleen in resistance to infection. *Ann Surg* 1919;70:513-21.
- King H, Shumacker HB Jr. Splenic studies. I. Susceptibility to infection after splenectomy performed in infancy. *Ann Surg* 1952;136:239-42.
- Douglas GJ, Simpson JS. The conservative management of splenic trauma. *J Pediatr Surg* 1971;6:565-70.
- Pearl RH, Wesson DE, Spence LJ, et al. Splenic injury: a 5-year update with improved results and changing criteria for conservative management. *J Pediatr Surg* 1989;24:428-31.
- Bond SJ, Eichelberger MR, Gotschall CS, et al. Nonoperative management of blunt hepatic and splenic injury in children. *Ann Surg* 1996;223:286-9.
- Upadhyaya P. Conservative management of splenic trauma: history and current trends. *Pediatr Surg Int* 2003;19:617-27.
- Malangoni MA, Dillon LD, Klamer TW, Condon RE. Factors influencing the risk of early and late serious infection in adults after splenectomy for trauma. *Surgery* 1984;96:775-83.
- Millikan JS, Moore EE, Moore GE, Stevens RE. Alternatives to splenectomy in adults after trauma. Repair, partial resection, and reimplantation of splenic tissue. *Am J Surg* 1982;144:711-6.
- Powell M, Courcoulas A, Gardner M, et al. Management of blunt splenic trauma: significant differences between adults and children. *Surgery* 1997;122:654-60.
- Cogbill TH, Moore EE, Jurkovich GJ, et al. Nonoperative management of blunt splenic trauma: a multicenter experience. *J Trauma* 1989;29:1312-7.
- Longo WE, Baker CC, McMillen MA, et al. Nonoperative management of adult blunt splenic trauma. Criteria for successful outcome. *Ann Surg* 1989;210:626-9.
- Pachter HL, Guth AA, Hofstetter SR, Spencer FC. Changing patterns in the management of splenic trauma: the impact of nonoperative management. *Ann Surg* 1998;227:708-17; discussion 717-9.
- Bhullar IS, Frykberg ER, Siragusa D, et al. Selective angiographic embolization of blunt splenic traumatic injuries in adults decreases failure rate of nonoperative management. *J Trauma Acute Care Surg* 2012;72:1127-34.
- Miller PR, Chang MC, Hoth JJ, et al. Prospective trial of angiography and embolization for all grade III to V blunt splenic injuries: nonoperative management success rate is significantly improved. *J Am Coll Surg* 2014;218:644-8.
- Liu PP, Wei CL, Yu FC, et al. Use of Splenic Artery Embolization as an Adjunct to Nonsurgical Management of Blunt Splenic Injury. *J Trauma - Inj Infect Crit Care* 2004, doi: 10.1097/01.ta.0000129646.14777.ff.
- Maddison, Frank E. MD Embolic Therapy of Hypersplenism, *Investigative Radiology: July 1973 - Volume 8 - Issue 4 - p 280-281.*
- Sclafani SJ, Shaftan GW, Scalea TM, et al. Nonoperative salvage of computed tomography-diagnosed splenic injuries: utilization of angiography for triage and embolization for hemostasis. *J Trauma* 1995;39:818-25; discussion 826-7.
- Stassen NA, Bhullar I, Cheng JD, et al. Selective nonoperative management of blunt splenic injury: an Eastern Association for the Surgery of Trauma practice management guideline. *J Trauma Acute Care Surg* 2012;73:S294-300.

23. Coccolini F, Montori G, Catena F, et al. Splenic trauma: WSES classification and guidelines for adult and pediatric patients. *World J Emerg Surg* 2017;12:40.
24. Gaspar B, Negoï I, Paun S, et al. Selective Nonoperative Management of Abdominal Injuries in Polytrauma Patients: a Protocol only for Experienced Trauma Centers. *Maedica (Bucur)* 2014;9:168-72.
25. Gomez D, Haas B, Al-Ali K, et al. Controversies in the management of splenic trauma. *Injury* 2012;43:55-61.
26. Smith J, Armen S, Cook CH, Martin LC. Blunt splenic injuries: have we watched long enough? *J Trauma* 2008;64:656-63; discussion 663-5.
27. Bee TK, Croce MA, Miller PR, et al. Failures of splenic non-operative management: is the glass half empty or half full? *J Trauma* 2001;50:230-6.
28. Velmahos GC, Chan LS, Kamel E, et al. Nonoperative management of splenic injuries: have we gone too far? *Arch Surg* 2000;135:674-9; discussion 679-81.
29. Haan JM, Biffl W, Knudson MM, et al. Splenic embolization revisited: a multicenter review. *J Trauma* 2004;56:542-7.
30. El-Matbouly M, Jabbour G, El-Menyar A, et al. Blunt splenic trauma: Assessment, management and outcomes. *Surgeon* 2016;14:52-8.
31. Velmahos GC, Zacharias N, Emhoff TA, et al. Management of the most severely injured spleen: a multicenter study of the Research Consortium of New England Centers for Trauma (ReCONNECT). *Arch Surg* 2010;145:456-60.
32. Clancy AA, Tiruta C, Ashman D, et al. The song remains the same although the instruments are changing: complications following selective non-operative management of blunt spleen trauma: a retrospective review of patients at a level I trauma centre from 1996 to 2007. *J Trauma Manag Outcomes* 2012;6:4.
33. McIntyre LK, Schiff M, Jurkovich GJ. Failure of nonoperative management of splenic injuries: causes and consequences. *Arch Surg* 2005;140:563-8; discussion 568-9.
34. Bhullar IS, Frykberg ER, Siragusa D, et al. Age does not affect outcomes of nonoperative management of blunt splenic trauma. *J Am Coll Surg* 2012;214:958-64.
35. Cocanour CS, Moore FA, Ware DN, et al. Delayed complications of nonoperative management of blunt adult splenic trauma. *Arch Surg* 1998;133:619-24; discussion 624-5.
36. Peitzman AB, Harbrecht BG, Rivera L, et al. Failure of observation of blunt splenic injury in adults: variability in practice and adverse consequences. *J Am Coll Surg* 2005;201:179-87.
37. Velmahos GC, Toutouzias KG, Radin R, et al. Nonoperative treatment of blunt injury to solid abdominal organs: a prospective study. *Arch Surg* 2003;138:844-51.
38. Watson GA, Rosengart MR, Zenati MS, et al. Nonoperative management of severe blunt splenic injury: are we getting better? *J Trauma* 2006;61:1113-8; discussion 1118-9.
39. Harbrecht BG, Peitzman AB, Rivera L, et al. Contribution of age and gender to outcome of blunt splenic injury in adults: multicenter study of the eastern association for the surgery of trauma. *J Trauma* 2001;51:887-95.
40. Moore EE, Cogbill TH, Jurkovich GJ, Shackford SR, Malangoni MA, Champion HR. Organ injury scaling: spleen and liver (1994 revision). *J Trauma*. 1995;38:323-4.
41. Bashir R, Grigorian A, Lekawa M, et al. Octogenarians with blunt splenic injury: not all geriatrics are the same. *Updates Surg* 2021;73:1533-9.
42. Coccolini F, Fugazzola P, Morganti L, et al. The World Society of Emergency Surgery (WSES) spleen trauma classification: a useful tool in the management of splenic trauma. *World J Emerg Surg* 2019;14:30.
43. Banerjee A, Duane TM, Wilson SP, et al. Trauma center variation in splenic artery embolization and spleen salvage: a multicenter analysis. *J Trauma Acute Care Surg* 2013;75:69-74; discussion 74-5.
44. Crichton JCI, Naidoo K, Yet B, et al. The role of splenic angioembolization as an adjunct to nonoperative management of blunt splenic injuries: A systematic review and meta-analysis. *J Trauma Acute Care Surg* 2017;83:934-43.
45. Bhangu A, Nepogodiev D, Lal N, Bowley DM. Meta-analysis of predictive factors and outcomes for failure of non-operative management of blunt splenic trauma. *Injury* 2012;43:1337-46.
46. Requarth JA, D'Agostino RB Jr, Miller PR. Nonoperative management of adult blunt splenic injury with and without splenic artery embolotherapy: a meta-analysis. *J Trauma* 2011;71:898-903; discussion 903.
47. Gill S, Hoff J, Mila A, et al. Post-traumatic splenic injury outcomes for nonoperative and operative management: a systematic review. *World J Surg* 2021;45:2027-36.
48. Schnüriger B, Inaba K, Konstantinidis A, et al. Outcomes of proximal versus distal splenic artery embolization after trauma: a systematic review and meta-analysis. *J Trauma* 2011;70:252-60.
49. Zenaidi H, Ismail IB, Rebi S, Zoghli A. Predictors of Failure of Nonoperative Management in Spleen Trauma. *J Emerg Trauma Shock* 2020;13:319-20.
50. Skattum J, Naess PA, Eken T, Gaarder C. Refining the role of splenic angiographic embolization in high-grade splenic injuries. *J Trauma Acute Care Surg* 2013;74:100-3; discussion 103-4.
51. Piper GL, Peitzman AB. Current management of hepatic trauma. *Surg Clin North Am* 2010;90:775-85.
52. Meira Júnior JD, Menegozzo CAM, Rocha MC, Utiyama EM. Non-operative management of blunt splenic trauma: evolution, results and controversies. *Rev Col Bras Cir* 2021;48:e20202777.