

# ABO blood groups and oncological and functional outcomes in bladder cancer patients treated with radical cystectomy

Alessandro Tafuri <sup>1,2\*</sup>, Andrea Panunzio <sup>1,3\*</sup>, Antonio Soldano <sup>1\*</sup>, Giovanni Mazzucato <sup>1</sup>, Paola Irene Ornaghi <sup>1</sup>, Giacomo Di Filippo <sup>4</sup>, Alessandra Gozzo <sup>1</sup>, Nicola De Maria <sup>1</sup>, Francesco Cianflone <sup>1</sup>, Aliasger Shakir <sup>5</sup>, Zhe Tian <sup>3</sup>, Matteo Brunelli <sup>6</sup>, Antonio Benito Porcaro <sup>1</sup>, Vincenzo Pagliarulo <sup>2</sup>, Walter Artibani <sup>1</sup>, Pierre I. Karakiewicz <sup>3</sup>, Alessandro Antonelli <sup>1</sup>, Maria Angela Cerruto <sup>1</sup>

<sup>1</sup> Department of Urology, University of Verona, Azienda Ospedaliera Universitaria Integrata di Verona, Verona, Italy;

<sup>2</sup> Department of Urology, "Vito Fazzi" Hospital, Lecce, Italy;

<sup>3</sup> Cancer and Prognostics Health Outcomes Unit, Division of Urology, University of Montreal Health Center, Montreal, Quebec, Canada;

<sup>4</sup> Department of General and Hepatobiliary Surgery, University of Verona, Azienda Ospedaliera Universitaria Integrata Verona, Verona, Italy;

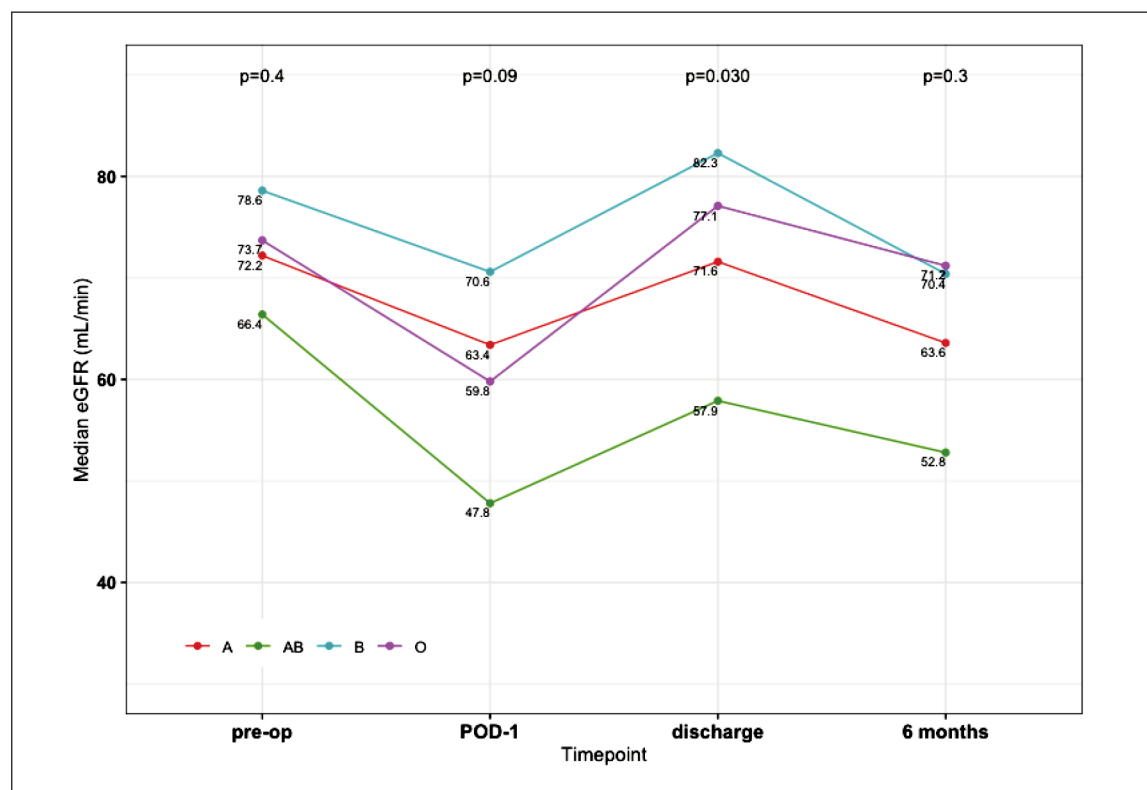
<sup>5</sup> USC Institute of Urology, Catherine and Joseph Aresty Department of Urology, Keck School of Medicine, University of Southern California (USC), Los Angeles, CA;

<sup>6</sup> Department of Pathology, University of Verona, Azienda Ospedaliera Universitaria Integrata di Verona, Verona, Italy.

\* These Authors contributed equally to the manuscript.

## Supplementary Figure 1.

Line plot illustrating median eGFR trend over time (pre-operative vs. post-operative day [POD] 1 vs. discharge vs. 6-months follow up) according to ABO-blood groups system.



**Supplementary Table 1.**

Univariable and multivariable logistic regression models addressing renal function decline (eGFR < 60 mL/min) at post operative day 1, at discharge and at 6-months follow up, according to ABO-blood groups system.

	UNIVARIABLE		MULTIVARIABLE *	
<b>Post-operative day 1 eGFR &lt; 60 mL/min</b>				
	OR (95% CI) <sup>1</sup>	p-value	OR (95% CI) <sup>1</sup>	p-value
A vs. 0	0.79 (0.48, 1.29)	0.3	0.59 (0.31, 1.12)	0.1
B vs. 0	0.46 (0.19, 1.07)	0.08	0.44 (0.14, 1.32)	0.2
AB vs. 0	2.71 (0.97, 8.80)	0.07	2.89 (0.80, 11.64)	0.1
<b>Discharge eGFR &lt; 60 mL/min</b>				
	OR (95% CI) <sup>1</sup>	p-value	OR (95% CI) <sup>1</sup>	p-value
A vs. 0	1.30 (0.75, 2.27)	0.4	1.26 (0.60, 2.70)	0.5
B vs. 0	0.63 (0.20, 1.69)	0.4	0.70 (0.16, 2.69)	0.6
AB vs. 0	3.27 (1.16, 9.42)	<b>0.025</b>	4.28 (1.04, 18.65)	<b>0.047</b>
<b>6 months eGFR &lt; 60 mL/min</b>				
	OR (95% CI) <sup>1</sup>	p-value	OR (95% CI) <sup>1</sup>	p-value
A vs. 0	1.02 (0.48, 2.13)	0.9	0.86 (0.28, 2.54)	0.8
B vs. 0	0.50 (0.13, 1.63)	0.3	0.71 (0.12, 3.68)	0.7
AB vs. 0	2.25 (0.58, 9.61)	0.2	1.69 (0.28, 11.56)	0.6

<sup>1</sup> OR = Odds Ratio; CI = Confidence Interval.  
\* Models adjusted for age, Charlson Comorbidity Index, pre-operative eGFR, urinary derivation type, post-operative complications.